



# The Groton Independent

Vol. 138 No. 16 ♦ Groton, South Dakota ♦ Wednesday, Dec. 16, 2020 ♦ Established in 1889

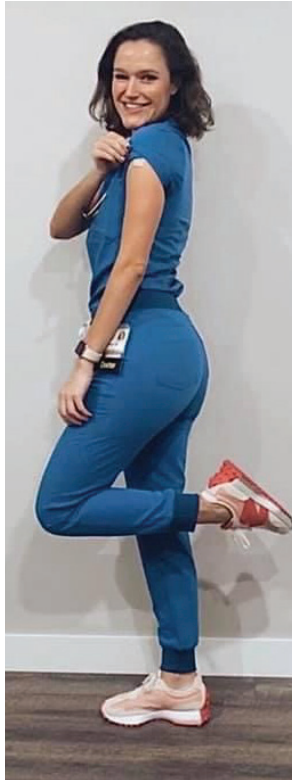
## Vaccination will be important in fight against COVID-19

The following was posted on Erin Sternhagen's Facebook Page

As a physician, I cannot stress enough the importance of vaccination to prevent illness. In the era of COVID-19, vaccines have the potential to prevent hundreds of thousands of deaths. I could not be more grateful to work at a hospital that had early access to the Pfizer COVID-19 vaccine, and can now feel safe working with my sickest patients in the ICU and general medicine floors.

When the COVID-19 vaccine becomes available to the general public, I encourage everyone to get vaccinated. You may have already had COVID-19 or may not be personally scared of the illness, but please think of others who may not be so fortunate. If not for you, please get vaccinated for those around you: for your grandmother with COPD, your neighbor with autoimmune disease, or your friend who is 8 months pregnant.

We can reverse the course of this pandemic and stop even more deaths from occurring if we just work together to stay safe. Please contact me if you have any questions about the vaccine or head to the CDC website for more information.



**Kathie Vitense nominated for "Members to Remember." Vitense (right) is pictured with Cara Dennert of the Columbia Legion Auxiliary.**

## Attendance limitations implemented at Groton Area

There will be attendance limitations at Groton Area home events. The Groton School Board grappled with COVID-19 issues for nearly an hour Monday night before deciding to reduce attendance at home events. At double headers, quadrangular and wrestling tournaments, attendance will be limited to four tickets per participant. For regular home games, it will be limited to six tickets per participant. Students in grades six through 12 will be able to attend without a ticket. Children in grades five and under will be required to have a ticket to attend.

Superintendent Joe Schwan said he was uneasy about the lack of social distancing and the wearing of face masks at the first home game. "Are we doing the right thing?" He asked the board about the totally open attendance policy the district has had. Board member Marty Weismantel said that the important thing is the safety for the kids and to allow them to have a full season. Weismantel, who is also a board member of the South Dakota High School Activities Association, emphasized, "The SDHSAA strongly recommends and highly encourages the wearing of masks."

The policy follows suit with limitations being implemented by many other school districts.

Discussion as begun with a potential coop of football with the Langford Area School District. Langford Area is facing a shortage of players to field a football team. Bringing in Langford Area should not boost Groton Area up to the next division in football. The SDHSAA is reclassifying football for one year, then will redo it for a two-year term to match up with the timeframe of reclassifications in neighboring states. In essence, it would be a three-year agreement if everything comes together. There are many things that would need to be worked out including having one football game in Langford for their homecoming event, finances, practices and school policies. There is not a lot of time to get this worked out as all paperwork for coops for the fall of 2021 need to be submitted to the SDHSAA by January 13th. The Groton Area Board of Education meets January 11th. Langford Area also has to decide which way to go. The Groton Area board decided to keep the doors open for a possible coop with Langford Area.

The board agreed to extend the emergency paid sick leave option to the end of the school year. The current program, implemented by Congress, ends December 31. Schwan said it is likely that Congress will extend it, but who knows when. He said in fairness to the district's employees, the program should be extended.

There was discussion on the 2021-22 school calendar on whether

*Members to Remember*




The Gingrich-Dixon #13 Wakonda Legion Auxiliary recently honored two long-time members with certificates and patriotic lap blankets. Pictured are members **Jean Mae Peterson** receiving her 70 year certificate and **JoAnn Ganschow** with her 65 year certificate.



Our Auxiliary Unit - Roy L. Hall Post #58 from Columbia would like to nominate **Kathie Vitense** "A Member to Remember." Kathie has been a member of the Legion Auxiliary for almost 20 years - joining in 2001! Even though Kathie has moved out of our community - she lives close enough by so that she can still be an integral part of our unit. Kathie volunteers many hours at the local hospital. She helps with our blood drive - checking donors in at this fall's drive. She understands how important it is that we give of ourselves to help others!

Kathie has "the gift of gab" which lends to being a great member of our unit. She is always willing to attend district meetings and makes anyone who attends events at our Legion feel welcome and comfortable. Unit 58 is proud of Kathie Vitense!

*There were five submissions for "Members to Remember" check the January Legionette for others.*

to revert back to a five-day school week or to keep with the four-day school week. Travis Kurth said there have been so many benefits to the four-day week plan. He said students have been able to get more help on Friday, that prep time and paper work can be done on Friday. Board member Deb Gengerke said she notices that Fridays seem to be a "decompression" day for her children and has been a benefit. The board directed Schwan to pursue both a four-day and a five-day calendar for consideration.

**The Groton Area Elementary Christmas Program will be livestreamed only on Dec. 22. Members of the public cannot attend, due to the spread of COVID-19.**

**Due to the earlier schedule, the event will be livestreamed at 10 a.m. and will remain on-line at GDILIVE.COM until 2 p.m. on Dec. 22. Thereafter it will be archived at 397news.com where GDI subscribers will have access.**

**We will also be livestreaming St. John's Lutheran Pre-school programs on Dec. 21 at 10:30 a.m. and 3 p.m.**

**Check out GDILIVE.COM for other events being livestreamed.**

# S & S Lumber & Hardware Hank Groton

**Will be closing at noon on  
Friday, Dec 18 for inventory.  
They Will Reopen Saturday.**

## Grapplers start season at Madison

Groton's wrestling squad went to Madison on Thursday to take part in a round robin tournament. Easten Ekern placed second; Christian Ehresmann, Aiden Heathcote, Dylan McGannon and Evan Jacobson all placed third while Nick Morris placed fourth and Korbin Kucker placed fifth.

106: Third Place: Christian Ehresmann was decided by Isaac Henry, Madison, 9-7; he was decided by Porter Neugebauer, Parkston, 7-2; and he with a technical fall over Dawson Wallen, SF Lincoln, 17-2.

138: Fifth Place: Korbin Kucker was pinned by Matt Mork, Webster Area, 1:24; he pinned Kat Elrod, SF Lincoln, 0:56; he was pinned by Sam Olson, Madison, 0:41; and he won by default over Aaron Baumiller, Parkson.

MS 74-81: Lincoln Krause was pinned by Wyatt Pickard, Madison, 0:24; and he was pinned by Gavin Schneider, Madison, 0:22.

MS 115-124: Isiah Scapaniack was pinned by Brody Dossett, Madison, 0:08; he was pinned by Trace Shoemaker, Webster Area, 1:04; and he was pinned by Gage Jodozi, Parkston, 0:31.

MS 120-126: Third Place: Aiden Heathcote decided John Weber, Parkston, 8-4; he was pinned by Ryan Braskamp, Madison, 3:43; and he was pinned by Gage Baumgam, Webster Area, 0:41.

MS: 128-138: Fourth Place: Nick Morris was pinned by Zach Vanzee, Parkston, 0:53; Double Default in round 2 with Easten Ekern, Groton Area; and he was pinned by Kaden Drause, Madison, 0:28.

MS: 128-138: Second Place: Easten Ekern decided Kaden Drause, Madison, 8-6 double default with Nick Morris, Groton Area; and in the third round, he was pinned by Zach Vanzee, Parkston, 1:04.

MS: 135-144: Third Place: Dylan McGannon was pinned by Hunter Hanson, Madison, 1:25; he pinned Samir Hamed, SF Lincoln, 0:45; and he was pinned by Stetson Riggs, Hanson, 0:19.

MS: 182-233: Third Place: Evan Jacobson was decided by Sean Sichmeller, Webster Area, 3-2; and he was pinned by Tayt Gran, Madison, 0:26.

## Basketball teams go 4-0 over Britton-Hecla

The Groton Area basketball teams went 4-0 in its games with Britton-Hecla.

The girls traveled to Britton on Friday where the junior varsity team won, 46-16. Carly Guthmiller led the Tigers with 15 points followed by Sydney Leicht with 14, Emma Schinkel had eight, Anna Fjeldheim six, Lydai Meier two and Cadence Feist 1. Leight and Guthmiller each made one three-pointer.

The girls varsity team won its game, 45-6, with Brooke Gengerke leading the way with 13 points followed by Alyssa Thaler with 11, Gracie Traphagen 10, Allyssa Locke nine and Kenzie McInerney 1. Thaler and Gengerke each made one three-pointer.

Then on Saturday, the boys hosted Britton-Hecla. Groton Area won the junior varsity game, 53-10. Jackson Cogley led the Tigers with 12 points followed by Jayden Zak and Favian Sanchez with eight each, Jacob Zak seven, Logan Ringgenberg six, Colby Dunker, Braxton Imrie and Holden Sippel each had three, Cade Larson two and Jordan Bjerke one. Cogley, Sanchez and Jayden Zak each made two three-pointers and Jacob Zak made one.

The varsity boys won their game, 66-45. Lane Tietz led the Tigers with 19 points followed by Tristan Traphagen with 12, Tate Larson 10, Isaac Smith seven, Jayden Zak six, Jacob Zak five, Wyatt Hearnen four and Cole Simon three. Tietz made three three-pointers while Simon, Jayden Zak and Jacob Zak each made one. All but one three-pointer were made in the second quarter.

## The Groton Independent

21 N Main, Groton 605/397-NEWS (6397)  
Paul Irvin Kosel, Publisher [paperpaul@grotonsd.net](mailto:paperpaul@grotonsd.net) ~ 605-397-7460

Tina Kosel, Office Manager [office@grotonsd.net](mailto:office@grotonsd.net) ~ 605-397-7285

Notices: [legals@grotonsd.net](mailto:legals@grotonsd.net)

News Items: [news@grotonsd.net](mailto:news@grotonsd.net)

Deadline to submit items: Noon Monday]

Yearly Subscription Rates are listed below. The Groton Independent (USPS# 230-440) is published weekly with its periodicals postage paid at Groton, SD.

**Postmaster: Send address changes to Groton Independent, PO Box 34, Groton, SD 57445**

**BLOCKER**  
CONSTRUCTION

NEW CONSTRUCTION  
REMODELING  
HOOP BARNs

(605) 216-2677 (605) 226-4062

## Groton Chiropractic Clinic

Carol McFarland-Kutter, D.C.  
1205 N 1st St., Groton 397-8204

"From minor scratches to a complete rebuild... we can do it all!"  
**Flarris**  
Auto Body

225 Brown County Hwy 19 South  
Aberdeen: 605/725-4900

## BEEF GIFT CERTIFICATES AND NEW \$25 GIFT CARDS ARE ON EVERYONE'S LIST



- Redeemable anywhere in the U.S. - supermarkets, meat markets and restaurants for American Beef.
- Convenient! Just mail. Send beef certificates and your shopping is done.
- Perfect for gifts to business acquaintances, friends, employees and for Christmas bonuses.
- Available in \$5, \$10, \$20 and \$25 certificates.

Order by mail by sending check to:  
SD Cattlewomen, PO Box 451, Winner SD 57580  
or email: [beefcertificates@yahoo.com](mailto:beefcertificates@yahoo.com); call: (605) 842-9066

## AUCTIONS

INTERSTATE AUCTION CENTER, December 19 10 am, 3 miles east of Sioux Falls exit 402. We consign tractors, skid loaders, farm ranch construction equipment 605-331-4550 [auctionzip.com](http://auctionzip.com)

## BUSINESS OPPORTUNITY

BUSINESS OPPORTUNITY: Fromm's Hardware and Plumbing in Kadoka, SD on I-90 with large trade area. Contact Jessi Fromm at 605-431-9657. Economic Development financing available.

## EMPLOYMENT

FULL-TIME DEPUTY SHERIFF, Hyde County, Highmore, SD. Must be certified in law enforcement or willing to be trained and certified within one year of hire date. Experience preferred. Request application at [hydeaud@venturecomm.net](mailto:hydeaud@venturecomm.net) or 605-852-2519 and submit completed application to Hyde County Auditor's Office, 412 Commercial Ave. SE, Highmore, SD 57345. Open until filled. EOE.

FARMERS UNION OIL at McLaughlin /Moberg SD is seeking a qualified General Manager. This is a four location energy, feed, auto parts, & service cooperative with sales of \$8 million. Successful business management experience desired. For more info contact Larry Fuller, 701-220-9775 or Email: [larry.fuller@midco.net](mailto:larry.fuller@midco.net)

JOURNEYMAN LINEMAN: The City of Miller, SD is looking for a journeyman lineman. The city's new electric system is all underground with 2 new substations. It has a thriving main street, good school system, hospital, pool, parks, youth activities, hunting, fishing and camping. For a job description and application please call (605) 853-2705 or [finance.office@cityofmiller.com](mailto:finance.office@cityofmiller.com). Please submit cover letter, resume and references. Salary DOE. Position open until filled. EOE

## FOR SALE

MATURE ROOSTER PHEASANTS for sale. \$13 plus delivery. Please call 605-680-0071 for more information.

FOR SALE: 350 Farmall gas tractor Parade clean runs good \$2900.00. 2003 CM 4Horse Tractor 6ft dressing room rear tack \$8900.00. Contact Michael Farrell 605-350-0495

## INSURANCE

SD Health Insurance Marketplace OPEN ENROLLMENT November 1 - December 15. Statewide assistance available. Go to [Healthcare.gov](http://Healthcare.gov) or call a Navigator at Western SD Community Action 888-441-0117.

## MISCELLANEOUS

FREE: Approximately 11' diameter by 90' high water stand pipe. Can use for water tower, culvert, building, etc. Call if interested or need more info. 605-730-1119 Gale Raymond

## TRAVEL

BUFFALO WYOMING'S HISTORIC OCCIDENTAL HOTEL: "Get Away Package" for 2. Suite, dinner, breakfast. \$175, New Year's Eve \$199. Cross-country trails, snowmobiling, skiing, shopping, Thursday night bluegrass jam. 1-307-684-0451

## NOTICES

ADVERTISE IN NEWSPAPERS statewide for only \$150. Put the South Dakota Statewide Classifieds Network to work for you today! (25 words for \$150. Each additional word \$5.) Digital employment ad is \$30. Statewide Full Digital Ad is \$300 for 1 week. Call the Groton Independent at 397-7460 for details.

**Groton Prairie Mixed**  
**Dec. 3 Team Standings:** Shih Tzus 16 1/2, Cheetahs 13 1/2, Jackelopes 13, Chipmunks 5  
**Men's High Games:** Roger Spanier 218, Brad Waage 210, 204, Randy Stanley 199  
**Women's High Games:** Nicole Kassube 171, Darci Spanier 166, Sue Stanley 163  
**Men's High Series:** Roger Spanier 545, Brad Waage 541, Randy Stanley 529  
**Women's High Series:** Nicole Kassube 454, Hayley Merkel 436, Brenda Waage 429



**GDILIVE.COM**  
  
**livestream**  
 Many Groton Area activities are Livestreamed by the  
  
 605/397-NEWS (6397)

**Conde National League**  
**Dec. 7 Team Standings:** Pirates 32 winners of first half, Tigers 28 1/2, Cubs 28 1/2, Braves 25, Giants 24, Mets 18  
**Men's High Games:** Russ Bethke 246, 190; Butch Farmen 227, 223, 207; Ryan Bethke 175  
**Men's High Series:** Butch Farmen 659, Russ Bethke 590, Ryan Bethke 175  
**Women's High Games:** Tanah Messevou 206, 177; Joyce Walter 185; Mary Larson 171  
**Women's High Series:** Tanah Messevou 529, Joyce Walter 450, Mary Larson 444

**Erdmann is BIG Idea Winner**  
 The awards ceremony for the 2020 BIG Idea Competition was held via zoom. Tessa Erdmann, Groton Area, won the Ag Innovation award for the Big Idea Contest. The advisor os Adam Franken. She also received honorable mention in the Marketing Design division. (Photo by Adam Franken)

It's the clever way to help loved ones remain living at home.  
 Call Dakota at Home to find trusted, local programs and services for older adults and people with disabilities.  
 SD's Aging and Disability Resource Center  
 1-833-663-9673  
  
 One Call Countless Resources  
 DakotaAtHome.org

**Conde National League**  
**Dec. 14 Team Standings:** Cubs 3, Giants 3, Pirates 2, Braves 2, Tigers 1, Mets 1  
**Men's High Games:** Collin Cady 234, Lance Frohling 222, Russ Bethke 217, 202, Ryan Bethke 204, Tim Olson 203  
**Men's High Series:** Russ Bethke 600, Ryan Bethke 566, Collin Cady 562  
**Women's High Games:** Tanah Messevou 196, 167; Joyce Walter 190; Nancy Radke 167  
**Women's High Series:** Tanah Messevou 494, Joyce Walter 466, Nancy Radke 416

A gift subscription to the Groton Independent makes a great gift for Christmas!

**Groton Prairie Mixed**  
**Dec. 10 Team Standings:** Shih Tzus 16 1/2, Cheetahs 13 1/2, Jackelopes 13, Chipmunks 5  
**Men's High Games:** Roger Spanier 218, Brad Waage 210, 204, Randy Stanley 199  
**Women's High Games:** Nicole Kassube 171, Darci Spanier 166, Sue Stanley 163  
**Men's High Series:** Roger Spanier 545, Brad Waage 541, Randy Stanley 529  
**Women's High Series:** Nicole Kassube 454, Hayley Merkel 436, Brenda Waage 429

**MEYERS TRACTOR SALVAGE**  
 ABERDEEN, SD  
 1000+ Salvaged Tractors & Combines  
 400+ Reground Crankshafts  
 500+ Tractor Tires  
 300+ Rebuilt Radiators  
 Large Line of Swather, Baler & Cutter Parts.  
 GREAT BUYS & SERVICE!  
 WANT TO BUY TRACTORS, COMBINES & SWATHERS FOR SALVAGE  
 Phone (605) 225-0185  
 5 Miles North & 1 Mile West of CASE-IH

The stakes are high. Strengthen journalism, strengthen democracy.  
 South Dakota News Watch produces unbiased, investigative journalism that sheds light on the concerns of all South Dakotans.  
 Will you join join us? Now through Dec. 31, double the impact of your tax-deductible gift with a dollar-for-dollar match. Your donation will advance the role of a free and vigilant press in our state.  
 SDNEWSWATCH.ORG/donate  
  
 Inform. Enlighten. Illuminate.

**Save Now On Home Security**  
 Monitored by ADT® the #1 home security company in the U.S.  
**ADT® 24/7 Monitored Home Security**  
 24/7 monitoring provides peace of mind  
 Yard sign and window decals help deter crime  
 Quickly connect to emergency response  
 May qualify for a homeowners insurance discount  
**FREE HOME SECURITY SYSTEM**  
 FREE VISA® REWARD CARD From Protect Your Home —\$100 Value  
 FREE WIRELESS REMOTE CONTROL —\$139 Value  
 FREE 7 WIRELESS DOOR/WINDOW SENSORS —\$695 VALUE!  
 FREE HD OUTDOOR CAMERA When you upgrade to ADT Video Lite —\$299 VALUE!  
**THIS OFFER IS ONLY AVAILABLE WHEN YOU CALL: 1-605-824-1118**  
 Ask about same-day installation! Reply By January 30, 2021  
 ADT Authorized Premier Provider  
 Protect Your Home  
 \$100 VISA® Reward Debit Card: \$100 Visa® reward debit card requires service activation. You will receive a claim voucher via email within 24 hours and the voucher must be returned within 60 days. Your \$100 Visa® reward debit card will arrive in approximately 6-8 weeks. Card is issued by MetaBank®, N.A., Member FDIC, pursuant to a license from Visa U.S.A. Inc. No cash advance or recurring payments. Can be used everywhere Visa debit cards are accepted. Card valid for up to 6 months; unused funds will forfeit after the valid thru date. Card terms and conditions apply. **BASIC SYSTEM:** \$99 Installation. 36-Month Monitoring Agreement required at \$27.99 per month (\$1,007.64). 24-Month Monitoring Agreement required at \$27.99 per month (\$671.76) for California. Offer applies to homeowners only. Offer valid for new ADT Authorized Premier Provider customers only and not on purchases from ADT LLC. Cannot be combined with any other offer. The \$27.99 offer does not include Quality Service Plan (QSP), ADT's Extended Limited Warranty, ADT Command: ADT Pulse Interactive Solutions Services ("ADT Pulse"), which help you manage your home environment and family lifestyle, require the purchase and/or activation of an ADT alarm system with monitored burglary service and a compatible computer, cell phone or PDA with Internet and email access. These ADT Pulse services do not cover the operation or maintenance of any household equipment/systems that are connected to the ADT Pulse equipment. All ADT Pulse services are not available with the various levels of ADT Pulse. All ADT Pulse services are not available in all geographic areas. You may be required to pay additional charges to purchase equipment required to utilize the ADT Pulse features you desire. **ADT VIDEO LITE:** ADT Video Lite installation is an additional \$299. 36-month monitoring contract required from ADT Video Lite: \$59.99 per month, (\$2,159.64), including Quality Service Plan (QSP). Indoor camera may not be available in all areas. **GENERAL:** For all offers, the form of payment must be by credit card or electronic charge to your checking or savings account. satisfactory credit history is required and termination fee applies. Certain packages require approved landlord phone. Local permit fees may be required. Certain restrictions may apply. Additional monitoring fees required for some services. For example, Burglary, Fire, Carbon Monoxide and Emergency Alert monitoring requires purchase and/or activation of an ADT security system with monitored Burglary, Fire, Carbon Monoxide and Emergency Alert devices and are an additional charge. Additional equipment may be purchased for an additional charge. Additional charges may apply in areas that require guard response service for municipal alarm verification. Prices subject to change. Prices may vary by market. Some insurance companies offer discounts on Homeowner's Insurance. Please consult your insurance company. Photos are for illustrative purposes only and may not reflect the exact product/service actually provided. Licenses: AL-21-001104, AR-CMPY.0001725, AZ-ROC217517, CA-AC06320, CT-ELC.0193944-L5, DC-EM5002653, DE-602516000016, DE-07-212, FL-CC1003427, GA-VA2055295, IA-AS-0206, ID-ELC-51-39131, IL-12301042, IN-C.P.D. Reg. No. - 19-08098, City of Indianapolis: LAC-00156, KY-City of Louisville: 483, LA-19194, LA-1915, LA-1102, MA-1355C, MD-107-1626, ME-LMS0017382, MI-3601205773, MN-TS01807, MO-City of St. Louis: CCF354, St. Louis County: 100194, MS-15007958, MT-PSP-ELS-LIC-347, NC-23310-SP-FA/LV, NC-1622-CSA, NE-14451, NJ Burglar Alarm Lic. # - NJ-348F00021800, NM-353266, NV-0068518, City of Las Vegas: 3000008296, NY-Licensed by the N.Y.S. Department of State UID#12000317691, NYS #12000286451, OH-53891446, City of Cincinnati: AC86, OK-AC1048, OR-170997, Pennsylvania Home Improvement Contractor Registration Number: PA022999, RI-3582, RI-7508, SC-BAC6530, SD-1025-7001-ET, TN-1520, TX-813734, ACR-3492, UT-6422596-6501, VA-115120, VT-ES-23827(C), WA-602588694/EC/PROTEYH934RS, WI-City of Milwaukee: PAS-0002966, WW-WV042433, WY-LV-G-21499, 3750 Priority Way South Dr. Indianapolis, IN 46240 ©2020 DEFENDERS, Inc. dba Protect Your Home DF-CD-NP-Q420

**DIRECTV**   
**DON'T JUST KINDA TV. DIRECTV.**  
**EVERY LIVE GAME EVERY SUNDAY**  
 Out-of-market games only. ONLY ON DIRECTV  
**DIRECTV CHOICE™ PACKAGE \$69.99/mo**  
 For 12 mos. Plus taxes and Regional sports fee.  
 \*w/ 24 mos. agmt. Autopay & Paperless Billing req'd. Photos subject to change. Regional Sports fee up to \$9.99/mo. \*\*w/ 24 mos. agmt. Autopay & Paperless Billing req'd. Credit card req'd (except MA & PA). Rest's apply.  
**Get the 2020 NFL SUNDAY TICKET season included at no extra cost.**  
 \*\$19.95 ACTIVATION, EARLY TERMINATION FEE OF \$20/MO. FOR EACH MONTH REMAINING ON AGMT., EQUIPMENT NON-RETURN & ADD'L FEES APPLY. Price incl. CHOICE All Included Pkg., monthly service and equip. fees for 1 HD DVR & 6 in 55" tv. Autopay & paperless bill and \$10/mo. bundle discounts for up to 12 mos each. Pay \$74.99/mo. → taxes until discount starts w/ 3 bills. New approved residential customers only (equipment lease req'd). Credit card req'd (except MA & PA). Rest's apply.  
 ONLY ON DIRECTV Only DIRECTV lets you watch every Sunday NFL game live, from start to finish—no matter where you live. Out-of-market games only.  
 NFL SUNDAY TICKET APP Stream NFL SUNDAY TICKET live—from anywhere—on your favorite connected devices.  
 RED ZONE CHANNEL® Brings you the final yards of every scoring drive around league on one LIVE channel. With NFL SUNDAY TICKET MAX. Only available in HD.  
 DIRECTV FANTASY ZONE™ Watch your favorite fantasy players live from game-to-game with real-time analysis. With NFL SUNDAY TICKET MAX. Only available in HD.  
 GAME MIX CHANNEL Watch up to 8 live NFL games on one screen, complete with scores and game clock. Only available in HD.  
**Don't settle for cable. Call now!**  
 iv Support Holdings LLC  
**1-855-945-4896**  
 CHOICE 1-YR ALL INCLUDED PACKAGE W/ OTHER ELIG. SVC ENDS 01/16/21. Available only in the U.S. (excludes Puerto Rico and U.S.V.I.). Pricing: \$59.99/mo for first 12 mos. only. After 12 mos. or loss of eligibility, then prevailing rate applies (currently \$115/mo for CHOICE All Included), unless cancelled or changed prior to end of the promo period. Pricing subject to change. \$5/mo. autopay/paperless bill discount: Must enroll in autopay & paperless bill within 30 days of TV activation to receive bill credits starting in 1-3 bill cycles. First time credit will include all credits earned since meeting offer requirements. Must maintain autopay/paperless bill and valid email address to continue credits. No credits in 2nd year for autopay/paperless bill. Includes: CHOICE All Included TV Pkg, monthly service & equipment fees for one Genie HD DVR, and standard pro installation. **Additional Fees & Taxes:** Price includes Regional Sports Fee of up to \$9.99/mo. (which is extra & applies to CHOICE and/or MAS ULTRA and higher Pkgs.), applicable use tax expense surcharge on retail value of installation, custom installation, equipment upgrades/add-ons (min. \$99 one-time & \$7/mo. monthly fees for each extra receiver/DIRECTV Ready TV (DVR), and certain other add'l fees & charges. See att.com/directv/ies for additional details. Different offers may apply for eligible multi-dwelling unit and telco customers. **DIRECTV SVC TERMS:** Subject to Equipment Lease & Customer Agreements. Must maintain a min. base TV pkg of \$29.99/mo. Some offers may not be available through all channels and in select areas. Visit directv.com/legal or call for details. **2020 NFL SUNDAY TICKET OFFER:** Subject to change. Package consists of all live out-of-market NFL games (based on customer's service address) broadcast on FOX and CBS. However, games broadcast by your local FOX or CBS affiliate will not be available in NFL SUNDAY TICKET. Games available via remote viewing based on device location. Other conditions apply. 2020 NFL SUNDAY TICKET regular full-season retail price is \$293.94. 2020 NFL SUNDAY TICKET MAX regular or full-season retail price is \$395.94. Customers activating CHOICE Package or above or MAS ULTRA Package or above will be eligible to receive the 2020 season of NFL SUNDAY TICKET MAX at no additional cost. NFL SUNDAY TICKET subscription will not automatically renew. Only one game may be accessed remotely at any given time. Compatible device/operating system required for online/mobile access. Additional data charges may apply. Visit directv.com/nfl for a list of compatible devices/system requirements for full Max Channel and interactive functionality. HD equipment model H/HR 21 or later is required. NFL, the NFL shield design and the NFL SUNDAY TICKET name and logo are registered trademarks of the NFL and its affiliates. NFL team names and uniform designs are registered trademarks of the teams indicated. ©2020 AT&T Intellectual Property. All Rights Reserved. AT&T, Globe logo, DIRECTV, and all other DIRECTV marks contained herein are trademarks of AT&T Intellectual Property and/or AT&T affiliated companies. All other marks are the property of their respective owners.

# Expired Driver License Extension Ends Dec. 30

Dec. 30 is the deadline for people to renew their expired South Dakota driver licenses and ID cards!

When COVID-19 temporarily shut down the state's driver license stations in early March, Gov. Kristi Noem issued an exemption delaying the renewal of driver licenses and ID cards that expired on or after March 13. That exemption ends Dec. 30.

In the past nine months, the Driver License staff has tried to reduce the backlog of renewals by having exam stations open additional days. You may also have seen or heard commercials about our "Renew 2020" campaign, letting people know how they can renew online.

If you can renew your license online we encourage you to do that. Here's how:

To apply online go to [renew2020sd.com](https://renew2020sd.com) for further information.

You may access and print instructions and an application at [renew2020sd.com](https://renew2020sd.com) to renew by mail.

The renewal fee is \$28 for a regular license and \$33 for a CDL.

The mailing address is Driver Licensing Program, 118 W. Capitol Ave., Pierre SD 57501.

To apply by mail, contact our office by email at [dpsdl@state.sd.us](mailto:dpsdl@state.sd.us) (preferred method) or call us at 605-773-6883 for a renewal by mail packet.

If you must renew in person, you must make an appointment in advance at <https://dps.sd.gov>. The appointment times are filling fast so please do that as soon as possible.

Please do NOT delay renewing your license or ID. If you do not have either one renewed by Dec. 30, you could be cited by law enforcement for driving with an expired license.



## Early Friday morning, while it was still on the dark side, you could see sparks falling from the welding being done on the Groton Water Tower.



### That's Life by Tony Bender

and India were weeping. I knew.

The first was the old Finn who I met at the river on summer days to catch fish. He spoke not a word of English, not to me, anyway, but our conversations were rich with sign language, smiles, and frowns of exasperation. They found him hanging from a tree not far from the river. Cancer, they said, and he feared doctors more than the end. I didn't judge. Couldn't. But I missed him.

There have been others; coworkers, schoolmates. Famous people, the Twilight of the Idols.

Closer to home was Paul, my stepfather Jim's grandson, and I'm not sure the pain ever left Jim's eyes. Then, Dylan's best friend Quinn, who some years after he moved away, ended his life. We both think about him a lot. His goodness. The way he encouraged Dylan, a marginal wrestler at best, while Quinn won them all. "You're getting better, Dylan," he said with a hug after every match for my downcast son who didn't quite believe it. And I'm sure he was there when Dylan finally won one. Oh, Quinn, if only you knew how much joy you brought us and how much sadness you left behind. There's a hole in the universe so massive and perverse it swallows black holes. I know.

I have known once, just once, the darkness that causes us to lose sight of all else, the light, hope, a billion reasons for trusting that things can get better. Somehow, by that noisy Rocky Mountain stream, surrounded by clouds and snowcapped mountains, an orange orb floating above, I'd lost sight of the light. Miserable in my marriage, in such dark place, for a moment as I ignored the beauty around me, I glanced at the case with the 9mm automatic inside. It could be over in a moment, I thought for just a moment—the smallest increment in which time can be measured. But then came a vision of a tow-headed son back home, that look of worshipful adoration in his eyes, undeserved and yet so welcome. Necessary even. He needed me and I needed him. Maybe we saved each other.

So I know.

I know because I know how both sides think, even if was just a glimpse from the dark side. The other side is even darker. For now. For now. But there is the promise of light and life and the certainty that all the good memories will eclipse this one.

I already miss the times I would have spent with Grant. Maybe at my dinner table. That vibe. That wry sense of humor. Even the mystery. India will miss him, too, even though they were on the periphery of each other's lives. They both could sing the birds down from the trees.

I know.

Even if it's just a glimpse, I know.

But I won't judge.

© Tony Bender, 2020

## The Groton Independent Printed & Mailed Weekly Edition Subscription Form

All prices listed include 6.5% Sales Tax

- Black & White..... \$41.54/year
- Colored ..... \$74.55/year
- Colored ..... \$42.60/6 months
- E-Weekly\* ..... \$21.30/year

\* The E-Weekly is a PDF file emailed to you each week. It does not grant you access to the GDI/Video Archives.

Name: \_\_\_\_\_  
Mailing Address: \_\_\_\_\_  
City \_\_\_\_\_  
State, Zip Code \_\_\_\_\_  
E-mail \_\_\_\_\_  
Phone Number \_\_\_\_\_

## Groton Daily Independent [www.397news.com](http://www.397news.com) Subscription Form

This option will grant you access to the GDI/Video Archives.

- 1 Month ..... \$15.98
- 3 Months..... \$21.30
- 6 Months..... \$26.63
- 9 Months..... \$31.95
- 12 Months..... \$42.60

Name: \_\_\_\_\_  
Mailing Address: \_\_\_\_\_  
City \_\_\_\_\_  
State, Zip Code \_\_\_\_\_  
Phone Number \_\_\_\_\_

The following will be used for your log-in information.

E-mail \_\_\_\_\_  
Password \_\_\_\_\_



Pay with Paypal. Type the following into your browser window:

[paypal.me/paperpaul](https://paypal.me/paperpaul)

Mail Completed Form to:

Groton Independent  
P.O. Box 34  
Groton, SD 57445-0034  
or scan and email to [paperpaul@grotonsd.net](mailto:paperpaul@grotonsd.net)

One week after clawing their way into the final playoff spot, the Minnesota Vikings are now on the outside looking in after a 26-14 loss to the Tampa Bay Buccaneers on Sunday. The final score isn't indicative of how well the Vikings played for the most part, but at the end of the day, a loss is a loss.



By Jordan Wright

**What Went Right...**

The Vikings found success on the ground against the number one rush defense. Coming into the game, the Bucs were only allowing 74 yards on the ground per game, a number Dalvin Cook reached by the beginning of the second quarter. When it was all said and done, the Vikings gained 162 yards on the ground, averaging 4.9 yards per carry.

The game plan coming into the game was to control the clock and keep the ball out of Tom Brady's hands. So, if you were just looking at the box score, you would have assumed the Vikings dominated this game. The Vikings had 27 first downs compared to 17 for the Bucs and 76 plays compared to 49. Minnesota also had over 39 minutes with the ball.

**What Went Wrong...**

The storyline we'll be hearing all week will be about the Vikings' kicker problem. Dan Bailey is 6th all-time in NFL history, completing 86.9% of his field goal attempts. Unfortunately, he missed all three of his field goals and extra point attempt, single-handedly ruining any momentum the Vikings had throughout the game. It wouldn't surprise me if he's cut before the team plane lands back in Minnesota.

The Vikings' pass protection was atrocious on Sunday. Cousins was sacked six times, with three of those coming in the fourth quarter, and he was also hit on 12 other pass attempts. The final nail in the coffin happened with 2:14 left in the game. The Vikings had the ball in Bucs' territory but were facing a fourth and 13... Cousins dropped back to pass and was immediately under pressure, getting the ball knocked out of his hands by Bucs' defensive end Jason Pierre-Paul. Tampa Bay recovered the fumble, and the Vikings never saw the ball again.

I'm not one to blame a loss on the officiating, nor do I believe in any NFL conspiracy theories. With that being said, there were some questionable things that happened in this game. The Vikings were called for defensive pass interference on a Hail Mary throw right before halftime. Pop quiz: in the last decade, how many other DPI calls have been made on Hail Mary attempts? The answer: zero. The referees also missed a blatant hands-to-the-face call late in the game, when Cousins was drilled by a forearm to the facemask. Those were just two examples of many instances throughout the game.

**Looking Ahead**

The Vikings return home and will welcome the Chicago Bears. The two teams played in week 10, with the Vikings winning that matchup 19-13. The Bears started the 2020 season with a 5-1 record, but have gone 1-5 since. Both teams are 6-7 this season, and the loser of this game will virtually be eliminated from the playoff race. ESPN is giving the Vikings a 62% chance to win, let's hope they're right. Skol!

## Genomics and Medicine...It's Complicated

In a truly grand feat of modern science, The Human Genome Project, an international collaborative effort, set out in 1990 to map our genetic makeup using diverse human genetic samples. In 2003 the project was completed, ultimately showing about 20,000 human genes. Since that project's completion, with ever-improving DNA sequencing technology, genomics researchers continue to gather more and more information about human DNA.



By Dr. Kelly Evans-Hullinger ~ Prairie Doc® Perspectives

A single human cell contains a mind-numbing 6 billion base pairs (each base pair is one of four types of nucleic acid molecules) in its DNA, organized into 23 pairs of chromosomes. Fascinatingly, only about 1.5 percent of our DNA actually codes for proteins, while the vast remainder is noncoding DNA, serving a regulatory function or, at least as far as we understand, no function at all.

In 2007 the first individual human genome was sequenced and published. In 2008, James Watson (as in, the 1962 Nobel Prize winning Watson and Crick model of the DNA double helix) poetically had his genome sequenced and published. The ability to sequence an individual human's genome held much promise, we hoped, in regard to predicting illness and personalizing medical interventions. But in 2020, this promise remains very much unfulfilled. In most cases primary care physicians don't yet utilize genomics information in our daily practice. Why is this?

The short answer: It's complicated. In some specific instances, genetic information can clearly convey an increased risk for disease. One example of this might be the BRCA gene mutation and associated risk of future breast or ovarian cancer. Because this specific gene mutation is so tightly linked with elevated risk, testing and finding the mutation in an individual (based on their family history or known relative with a mutation) can have direct practical implications on strategies for cancer screening or even consideration of surgery to remove the at-risk tissue.

Scenarios like BRCA mutation are outliers, however. When we look to common diseases, such as cardiovascular disease or diabetes, finding genetic information useful gets, well, complicated. In these cases, what we have found is that many genes are involved, and it is extremely difficult to estimate how much a mutation in one of those genes affects overall risk. That's not to mention all the environmental factors which may affect risk as much or more than the genetic profile.

Genomics remains a vast, new, and thus-far difficult to access specialty of medicine. At its current rate of growth, however, I am confident my previous statement will not remain true during my career in medicine.

Kelly Evans-Hullinger, M.D. is part of The Prairie Doc® team of physicians and currently practices internal medicine in Brookings, South Dakota. For free and easy access to the entire Prairie Doc® library, visit [www.prairiedoc.org](http://www.prairiedoc.org) and follow Prairie Doc® on Facebook featuring On Call with the Prairie Doc® a medical Q&A show streaming on Facebook and broadcast on SDPB most Thursdays at 7 p.m. central.

**W**  
Weismantel  
AGENCY

AUTO  
HOME  
FARM  
COMMERCIAL  
CROP

Marty Weismantel  
605/396-7341  
weisag@nvc.net

PROGRESSIVE SOUTH DAKOTA PUBLIC INSURANCE ALLIANCE GREAT AMERICANS North Star Northwest GF SFM

ACCESS TO MANY MORE COMPANIES!

**FROST**  
CONSTRUCTION INC.  
GENERAL CONTRACTOR

605.290.1535

custom homes | remodels | additions

**MIDWEST MASONRY &**

New or Replaced Sidewalk  
Block Walls ~ Egress Windows  
Driveway ~ Garage Floors ~ Basement Floors  
Stone and Brick Work

Call for a free quote 605/397-8383

**JOHNSON AGENCY**

Real Estate & Insurance  
Jay Johnson, Broker

[www.johnsonagencygroton.com](http://www.johnsonagencygroton.com)

102 N Main St. Office: 605/397-2424  
Groton, SD 57445 Home: 605/397-8565

**Dakota Outdoors**

Erik Dean

402 N Main St  
Aberdeen, SD 57401  
605.229.0123

[dakoutdoors@midconetwork.com](mailto:dakoutdoors@midconetwork.com)

**HARR Motors**

[www.harrmotors.com](http://www.harrmotors.com)

605-225-3078 ~ 1-800-658-3463

CARPENTRY • CONCRETE

**SCHULTZ**  
CONSTRUCTION LLC

BATH, SD

Check out our portfolio on Facebook at **Schultz-Construction-LLC**

~ New Construction and Remodeling- renovations, additions, and carpentry work

~ Concrete- foundations, flatwork, decorative concrete surfaces.

605-380-1717

[www.shawnschultzconstruction.com](http://www.shawnschultzconstruction.com)

**Hanlon Brothers**  
Gravel Hauling

New & Cleaning of Stockdams with our 60' reach trackhoe

605/395-6531

Put our experienced team to work for you!

**GROTON**  
Ford

[GROTONFORD.COM](http://GROTONFORD.COM) 605-397-2311

**Harry Implement**

"Family Owned & Operated Since 1935!"

CERTIFIED DEALER  
AFS  
ADVANCED FARMING SYSTEMS  
CASE IH

(605) 395-6421  
Ferney

## Brown County Delinquent Tax Notice

I, PATTY VANMETER, TREASURER OF BROWN COUNTY, SOUTH DAKOTA, DO HEREBY CERTIFY THE TAXES AND SPECIAL ASSESSMENTS ON THE FOLLOWING LIST OF REAL AND PERSONAL PROPERTY HAVE BECOME DELINQUENT FOR THE YEAR 2019. THIS LIST MAY NOT REFLECT CHANGES IN RECORDED OWNERSHIP.

IN TESTIMONY, I, PATTY VANMETER, TREASURER OF BROWN COUNTY, SOUTH DAKOTA, HERETO SET MY HAND AND SEAL.

DECEMBER 1, 2020.

\$797.84 NE 13-128-60 SCHROEDER, JOHN J  
\$674.74 NW 13-128-60 SCHROEDER, JOHN J  
\$440.90 SE 13-128-60 SCHROEDER, JOHN J  
\$535.03 SW 13-128-60 SCHROEDER, JOHN J  
\$1,753.01 NE 1-127-64 SUMP-TION, GEORGE A.  
\$418.50 NE SE 1-127-64 SUMP-TION, GEORGE A.  
\$690.02 NW 6-127-64 SUMP-TION, GEORGE A.  
\$943.66 SE 6-127-64 EX 1 AC FOR HWY SUMP-TION, GEORGE A.

\$707.15 SW 6-127-64 SUMP-TION, GEORGE A.

\$779.89 N2 NE 14-127-64 SUMP-TION, GEORGE A.

\$731.10 SCHLOSSER OL 1 W2 W2 14-127-64 & AB RR ROW SUMP-TION, GEORGE A.

\$734.06 NW 19-127-65 JAL-BERT, JASON  
\$491.65 NE 30-127-65 SUMP-TION, GEORGE A.  
\$503.95 NW 30-127-65 SUMP-TION, GEORGE A.

\$605.36 S2 SW 2-127-61 EX 1.99 AC TO HWY KNECHT, JUSTIN

\$373.77 OLSON'S OL A NW 25-126-64 OLSON, EUGENE

\$392.82 S 30 RODS OF E 112 RODS SE 7-126-63 EX HWY COX, JEFFERY

\$1,259.06 THOMPSON'S OL A SW 9-126-63 NOBLE, CHRISTINE L

\$853.98 SE NW 16-126-63 JEM FARM LLC,  
\$901.63 SE SW 16-126-63 JEM FARM LLC,

\$887.38 TRACT A BADLGEY ADD NE 20-126-63 VOLEK, SHERISE

\$8.52 LT 9-10 BK 3 HOUGH-TON PIEHL, MATT

\$10.53 LT 11-13 BK 3 HOUGH-TON PIEHL, MATT

\$190.42 W2 LT 1 & LT 2 BK 13 HOUGHTON HATFIELD, NELLIE

\$580.35 NE 20-126-61, EX LAND PLATTED MITCHELL, CUR-TIS

\$205.19 MITCHELL CONS EASE TR 2, NE 20-126-61 MITCHELL, CURTIS

\$64.61 MITCHELL CONS EASE TR 3, NE 20-126-61 (NOT PART OF WR) MITCHELL, CURTIS

\$236.57 LT 1 RANDY STANLEY RPL STANLEY'S OL 1 SW 13-125-61 WALKER, THOMAS

\$879.13 S 37 RODS OF W 44 RODS SW 25-125-62 (10AC) HANSEN, KERRY L.

\$1,567.40 NW 31-125-62 KRAGE, LANNY

\$3,155.14 NE 8-125-64 HINZ, DONNIE E

\$4,901.80 SE 8-125-64 HINZ, DONNIE E

\$3,118.81 SW 8-125-64 HINZ, DONNIE E

\$131.12 SW CORNER OF NW 12-125-64 S&W OF ELM RIVER HINZ, DONNIE E

\$1,382.30 NW OF SW & PT SW OF SW 12-125-64 HINZ, DONNIE E

\$103.67 OL A RYSTOM SW 13-125-64 RYSTROM, JESSE

\$1,586.62 SW NW & NW SW 16-125-64 HINZ, DONNIE E

\$1,531.03 NW 18-125-64 HINZ, DONNIE E

\$580.88 E2 NW 1-125-65 HINZ, THOMAS L

\$1,246.96 W2 NW 1-125-65 HINZ, DONNIE E

\$3,770.12 NE 28-124-63 HO-SACK, DARRELL G

\$3,127.53 SE 30-124-63 EX-LAND PLATTED PRAY, CHAD

\$1,575.05 SE 3-124-60 SIP-PEL, MONTE

\$2,358.26 S2 S2 SW 32-124-60 HOWARD, JESSE J

\$340.92 NW 23-123-60 (INC UNPLATTED EMERGENCY WATER-SHED LAND) INC VAC ROAD BABCOCK, BRUCE

\$33.31 LT 2 BK 2 COX 1ST SD JAMES (LT 28 JAMES OLS) COX, LENA

\$797.48 LT 2-3 BK 5 BATH FRIED, ERIC

\$84.43 W 92' LT 7-8 BK 5 BATH STILLSON, ANNETTE C

\$1,064.10 W 92' LT 9-12 BK 5 BATH STILLSON, ANNETTE C

\$84.87 W 92' LT 13-14 BK 5 BATH STILLSON, ANNETTE C

\$143.18 E 71' LT 9-12 BK 12 BATH GLYNN, MICHAEL C

\$2,348.61 LT 3 HANSON'S 1ST

SD BATH HANSON, CARRIE A

\$1,258.85 BECKLERS 1ST SD SW 2-123-63 SUMNER, LEE ANTHONY

\$4,615.86 LT 2 WRIGHTS 3RD SD NE 7-123-62 FERGUSON, CHAD A.

\$730.51 LT 1 WULFF 1ST SD SE 7-123-62 WULFF, WILLIAM

\$2,703.94 SE 11-123-63 EX LT 1 HUGHES LD RANCH LLC,

\$240.77 LT 1 2ND SD OL 3 PRIORS OL NW 17-123-62 1972 SHAN PRUITT, JESSICA

\$516.92 LT 1 HANLON SD NE 20-123-62 FINLEY, PATRICIA

\$1,024.93 LARSONS OL 1 NW 25-123-63 INC HETTICH CONS EASE TR 1 HETTICH LLC,

\$22.31 OL 9 JOBEE ACRES NE 27-123-63 LOHMAN, VERNON ESTATE

\$161.05 OL 33 JOBEE ACRES NE 27-123-63 ERICKSON, RON-ALD

\$2,147.71 660' E OF W 750' OF N 660' NW 2-123-64 (9.24AC) FETTIG, JAMES P

\$3,820.47 LT 1 KESSLERS 2ND ADD NE & NW 4-123-63 (17.78 A) KESSLER, TIMOTHY J REVOCABLE TRUST,

\$365.12 LT 2 KESSLERS 2ND ADD NE & NW 4-123-63 (6.38 A) KESSLER, TIMOTHY J REVOCABLE TRUST,

\$929.37 OL A NE 4-123-64 (6 A) ARROW ENTERPRISES, LLC,

\$2,039.56 LT 8 D&S BUSI-NESS PARK 1ST ADD NW 9-123-63 (LT 3 SUNRISE) KADRMAS, KYLE

\$760.27 TR 1 BRICK SW SW 16-123-64 WEIDEMAN, THOMAS J

\$2,012.52 LT 2 FULKER'S HOMESTEAD SD SE 17-123-64 (LT 6 FULKER) WIPF, THOMAS J

\$779.68 LT 3 LOWARYS 1ST SD SE 27-123-64 (1 A) BISTO-DEAU, TODD

\$191.55 LT 4 LOWARYS 1ST SD SE 27-123-64 (1 A) ANGER-HOFER, MICHAEL S

\$920.34 LT 2 FISCHERS 1ST ADD NW 30-123-63 (4.67 A) KING, STEVEN J

\$711.36 SE 4-123-65 VAN-DERPLOEG, TITUS

\$948.84 NE 7-123-65 EX TRACT A VANDERPLOEG, TITUS

\$721.59 SE 7-123-65 EX LAND PLATTED VANDERPLOEG, TITUS

\$2,565.53 LT 1 BAUERS 3RD ADD S2 7-123-65 VANDER-PLOEG, TITUS

\$685.69 LT 2 BAUERS 3RD ADD SW 7-123-65 VANDER-PLOEG, TITUS

\$437.78 LT 3 BAUERS 3RD ADD SW 7-123-65 VANDER-PLOEG, TITUS

\$175.40 LT 4 BAUERS 3RD ADD SW 7-123-65 VANDER-PLOEG, TITUS

\$1,087.16 NW 8-123-65 VAN-DERPLOEG, TITUS

\$593.75 NE 9-123-65 EX LAND PLATTED VANDERPLOEG, TITUS

\$1,451.71 SE 9-123-65 VAN-DERPLOEG, TITUS

\$1,070.86 SW 9-123-65 VAN-DERPLOEG, TITUS

\$1,149.69 NE 18-123-65 VAN-DERPLOEG, TITUS

\$301.02 LT 1 EASTERN SKY SD NW 18-123-65 MARDIAN, DAN

\$1,056.25 SE 18-123-65 SD LAND LLC,

\$22.35 OL 2 TRAIL SCHOOL NW 23-123-65 DAVIS, ALLEN L

\$1,589.88 NW 13-121-65 TORRENCE, LINDA

\$1,248.39 NE 14-121-65 TOR-RENCE, LINDA

\$186.18 LT 11-14 BK 4 MAN-SFIELD SE 32-121-64 DONLEY, KIT

\$41.50 LT 3 REMDES ADD MANSFIELD SE 32-121-64 1969 GREAT LAKES LEFFORGE, GARY

\$2,578.20 CLINTON LT A NW 17-122-60 JACOBSON, CLINT L

\$8.11 LT 6 BK 5 FERNEY SW 31-122-60 MUNDHENKE, WILLIAM

\$133.76 LT 7 BK 5 FERNEY SW 31-122-60 MUNDHENKE, WILLIAM

\$266.29 200' SQ SW CORNER OL J SD BK 14-16 & OL H-I-J-K EX .01 AC FERNEY SW 31-122-60 MUNDHENKE, WILLIAM D

\$479.88 LT 1 HANSENS 1ST SD S2 NE & N2 SE 17-121-62 HANSEN, HARLEY

\$1,276.74 NE 32-128-65 SUMP-TION, GEORGE A.

\$1,312.05 ULRICH OL A SW 8-128-63 STORM, HERMAN E

\$1,728.55 NE 32-128-63 SUMP-TION, GEORGE A.

\$1,235.74 SE 3-128-62 EX LAND DEEDED HANSEN, DEAN

\$1,421.40 E2 NE 17-128-62 SIEFKES, COREY

\$3,323.90 SE 35-128-62 SCHROEDER, JOHN J

\$1,102.38 W 2' LT 4 & E 22' LT 5 BOYD'S 1ST SD LT 1-5 BK 5 ORIGINAL PLAT ABERDEEN 16 3RD LLC,

\$5,009.47 UNIT 1 305 S MAIN CONDOMINIUMS LT 15-16 BK 5 ORIGINAL PLAT CML COMPAN-IES LLC,

\$1,568.89 LT 17-18 BK 6 ORIGINAL PLAT SQUASH LLC,

\$3,443.86 LT 7 BK 10 ORIGI-NAL PLAT VANSLYKE LLC,

\$5,860.25 LT 8-9 BK 10 ORIG-INAL PLAT VANSLYKE LLC,

\$7,700.35 LT 1-2 BK 11 ORIG-INAL PLAT NEW MARKETS IN-VESTMENT 100 LLC,

\$663.24 LT 4 BK 11 ORIGINAL PLAT ABERDEEN DOWNTOWN ASSOCIATION,

\$2,338.33 LT 5 BK 11 ORIGI-NAL PLAT 210 MAIN LLC,

\$4,573.63 LT 10-11 BK 11 ORIGINAL PLAT OFMC LLC,

\$2,441.89 LT 4 BK 21 1ST ADD VILHAUER, JEFFREY

\$3,533.83 LT 1-3 BK 22 1ST ADD KOST, MICHAEL

\$1,190.46 LT 4 BK 23 1ST ADD EVANGELISTO, LEONARD A

\$1,988.36 LT 4 BK 26 1ST ADD SALON REMIX,

\$465.43 W2 LT 5 & LT 6 BK 35 2ND ADD HENGEL FB LLC,

\$556.72 LT 1 DRAEGER & DANIEL RPL LT 10-12 BK 35 2ND ADD EX H2 HENGEL FB LLC,

\$416.08 LT 2 DRAEGER & DANIEL RPL LT 10-12 BK 35 2ND ADD HENGEL FB LLC,

\$1,820.21 W 37.5' LT 14 & LT 13 BK 37 2ND ADD BADER, KYNA

\$981.23 N 121' LT 2 BK 41 2ND ADD PRESTON, PATRICK

\$587.37 S 32' LT 6 BK 43 2ND ADD HTL HOLDINGS LLC,

\$739.78 S 92' LT 7 BK 43 2ND ADD HEBEISEN, DEVIN J

\$1,201.04 LT 8 BK 45 2ND ADD KUSHMAN, GLENN

\$791.50 LT 9 BK 45 2ND ADD KUSHMAN, GLENN

\$1,928.33 LT 5 BK 48 2ND ADD MARTIN, JAMES

\$824.02 S 50' LT 1 BK 49 2ND ADD KOKUA INVESTMENTS LLC,

\$220.65 S 21' LT 6 BK 50 2ND ADD GISI, TIMOTHY C

\$431.29 LT 4 CARLISE HEIRS RPL LT 23-25 BK 53 2ND ADD ZAHN, ALAN J

\$1,134.91 S 6' LT 1 & LT 2 KUPPERS RPL N2 LT 7- 10 BK 57 2ND ADD FISCHER, JOSEPH

\$929.78 LT 1 MCFARLAND-ZUMBAUM FIRST ADD SW 13-123-64 ERDMANN, RONALD A

\$782.01 LT 5-6 & V/A BK 59 2ND ADD ERDMANN, RONALD A

\$1,049.33 LT 3 BK 62 2ND ADD KMP LLC,

\$904.00 LT 1 HOWARD & HEDGER 1ST RAR OF LT 11-12 BK 4 NORTH ABDN ADD SUM-MERS, STACI

\$1,298.69 LT 10 BK 6 NORTH ABDN ADD FASTHORSE, KRISTA

\$1,206.13 W 92' LT 11-12 BK 10 NORTH ABDN ADD WAGNER, RON TRUST 2020,

\$313.11 E 50' LT 11-12 BK 10 NORTH ABDN ADD WAGNER, RON TRUST 2020,

\$1,190.72 LT 7 EX W 96' BK 20 BENNETT & THOMAS ADD HINZ, THOMAS L

\$2,176.56 LT 3 BK 22 BEN-NETT & THOMAS ADD MEHL-HAFF, CHARLES C

\$1,010.92 LT 4 BK 26 BEN-NETT & THOMAS ADD BUFFALO, KATHLEEN ESTATE

\$1,869.22 LT 17 BK 29 BEN-NETT & THOMAS ADD MC-CURDY, JAY

\$610.35 LT 2 SCHACHTE'S SD OF LT 7-8 BK 36 BENNETT & THOMAS ADD ORMAND, ROGER T.

\$2,517.13 LT 4 EASTON'S 1ST SD OF LT 1-6 BK 41 BENNETT & THOMAS ADD FETTIG, JAMES P

\$1,084.55 LT 8 BK 49 BEN-NETT & THOMAS ADD WOLF, DANIELLE

\$2,456.43 LT 1-2 BK 10 SULLI-VAN & EASTON ADD LEIDHOLT, KYLE

\$585.10 LT 2 REGEHR & SCHWANDT 1ST ADD (BK 10 SULLIVAN & EASTON ADD MC-CALLISTER, LINDA R

\$1,698.23 LT 9-10 BK 11 SULLIVAN & EASTON ADD HERTHER, DERRICK M.

\$2,418.37 LT 11-12 BK 12 SULLIVAN & EASTON ADD KMP LLC,

\$1,749.29 LT 13-16 BK 26 CORRECTED PLAT OF HIGH-LANDS MEHLHAF, CHARLES C

\$922.13 LT 3 BK 2 LAKEVIEW 1ST RPL SCHEEL, JEFFREY E

\$2,382.62 # 2302 LAKEVIEW CONDOS LT 1 BK 1 LAKEVIEW 1ST RPL NIESEN, TWYLA E

\$1,102.64 LT 1 CHARLES ED-WARDS ADD (LT & PT 2 HAY'S RPL LT 9-12 BK 19 1ST ADD TO HIGHLANDS) EDWARDS, CLEO ANN

\$808.01 LT 10 BK 22 1ST ADD TO HIGHLANDS SMITH, BRANDON E

\$1,308.35 LT 35 BK 9 6TH ADD TO HIGHLAND NORTH NEWCOMB, ELMER E ESTATE

\$1,839.02 LT 26 BK 14 12TH ADD TO HIGHLAND NORTH RAUSCHER, STEVEN

\$3,260.58 LT 3 BK 18 14TH ADD TO HIGHLAND NORTH MOINICHEN, ROGER H

\$3,253.46 LT 5 BK 3 16TH ADD TO HIGHLAND NORTH HEMKE, FREDERIC JB

\$2,737.35 LT 16 BK 7 17TH ADD TO HIGHLAND NORTH MITCHELL, CURTIS

\$3,027.62 LT 3 BK 2 NORTH-VIEW 3RD ADD SCHWAN, ALI-SON R

\$1,219.08 LT 3 BK 8 NORTH-VIEW 7TH ADD HAUCK, LO-RETTA M

\$46,395.37 OL C BK 6 NORTH PLAIN 1ST ADD DAKOTA SQUARE PARTNERS,

\$3,180.71 LT 2 BK 2 MEHL-HOFF'S 8TH ADD TO NORTH PLAINS SD PITZ, THOMAS J

\$326.00 LT 14 BK 1 MEAD-OWS ON DAKOTA 2ND SD (L1 LEE HOLTGATE 2ND) HEBEISEN, DEVIN J

\$236.08 LT 11 BK 6 MEAD-OWS ON DAKOTA 5TH SD (L1 LEE HOLTGATE 2ND) MEYER, BRENT

\$236.08 LT 12 BK 6 MEAD-OWS ON DAKOTA 5TH SD (L1 LEE HOLTGATE 2ND) MEYER, BRENT

\$236.08 LT 13 BK 6 MEAD-OWS ON DAKOTA 5TH SD (L1 LEE HOLTGATE 2ND) MEYER, BRENT

\$243.53 LT 14 BK 6 MEAD-OWS ON DAKOTA 5TH SD (L1 LEE HOLTGATE 2ND) MEYER, BRENT

\$280.88 LT 15 BK 6 MEAD-OWS ON DAKOTA 5TH SD (L1 LEE HOLTGATE 2ND) MEYER, BRENT

\$479.04 LT 4 BK 7 MEADOWS ON DAKOTA 5TH SD (L1 LEE HOLTGATE 2ND) IDEAL CUSTOM HOMES LLC,

\$479.04 LT 5 BK 7 MEADOWS ON DAKOTA 5TH SD (L1 LEE HOLTGATE 2ND) IDEAL CUSTOM HOMES LLC,

\$662.70 LT 4 BK 8 MEADOWS ON DAKOTA 5TH SD (L1 LEE HOLTGATE 2ND) IDEAL CUSTOM HOMES LLC,

\$1,465.32 LT 10 BK 7 VAHL-DI-CKS RPL HOWARD & HEDGERS RPL OF NW ADD PEW, MEGAN

\$842.03 LT 9-10 BK 9 HOW-ARD & HEDGER RPL OF NW ADD & W 17' N CONGRESS ST USSELMAN, GAIL

\$951.95 LT 14 LADNER'S RPL BK 1 HAGERTY & LLOYD ADD SEVERSON, TAMMY M

\$2,441.54 LT 14 CAMPBELL'S RPL LT 13-18 BK 6 HAGERTY & LLOYD ADD ABERDEEN LILLIS, MICHAEL

\$872.62 S 15' LT 11 & LT 12 BK 10 HAGERTY & LLOYD ADD ELL, JENNIFER

\$753.89 LT 23-24 BK 11 HAGERTY & LLOYD ADD NORTHPROP, DEBRA A

\$1,189.10 N 10' LT 23 & LT 24 BK 19 HAGERTY & LLOYD ADD BUTTON, RONALD G

\$1,502.09 E 92' LT 3-4 BK 20 HAGERTY & LLOYD ADD GONZA-LES, JULIA A

\$363.75 LT 15 BK 20 HAGER-TY & LLOYD ADD POOR, PAUL A

\$355.41 LT 18 BK 23 HAGER-TY & LLOYD ADD PATTERSON, LEE ANN

\$370.41 LT 18-19 BK 26 HAGERTY & LLOYD ADD CLE-BERG ENTERPRISE,

\$202.81 LT 3-4 BK 31 HAGER-TY & LLOYD ADD LENLING, SHELDON D.

\$846.58 LT 16 BK 36 HAGER-TY & LLOYD ADD KERSEY, JAMES MICHAEL

\$1,391.40 LT 17 BK 36 HAGERTY & LLOYD ADD KERSEY, JAMES MICHAEL

\$161.73 LT 18 BK 36 HAGER-TY & LLOYD ADD KERSEY, JAMES MICHAEL

\$1,099.00 LT 5-6 BK 37 HAGERTY & LLOYD ADD HU-BERT, GERALD L.

\$1,485.76 LT 11-12 BK 45 HAGERTY & LLOYD ADD OGDEN, AMANDA L

\$445.97 LT 15 BK 45 HAGER-TY & LLOYD ADD RITTER, DALE

## Continued from previous page

\$25.60 S 100' LT 18 BK 5 ORIG PL FREDERICK GREEN, HANNAH CHRISTINA  
\$66.86 LT 5 BK 10 ORIG PL FREDERICK MOORE, JAMES  
\$93.27 W2 LT 3 & LT 4 & E2 LT 5 BK 27 1ST ADD FREDERICK E2 11-127-64 GHOLSON, TISA LOUISE  
\$51.70 W2 LT 5 & LT 6 BK 27 1ST ADD FREDERICK E2 11-127-64 GHOLSON, TISA LOUISE  
\$191.93 OL A-C WINSTONS OL FREDERICK SUMPTION, GEORGE A.  
\$1,899.81 W 70 A S2 SW 2-127-64 EX LAND PLATTED SUMPTION, GEORGE A.  
\$1,784.45 E2 NE 11-127-64 EX LAND DEEDED & EX HWY (73.83AC) SUMPTION, GEORGE A.  
\$1,294.97 SE 11-127-64 EX 30 AC NW CORNER & EX LAND PLATTED FREDERICK SUMPTION, GEORGE A.  
\$945.57 LT 10 ROUNDYS SD SE 15-124-64 MITZEL, MICHAEL C  
\$376.35 LT 3 RATH SD SW 26-124-64 WEIDEMAN, TJ  
\$4,125.62 LT 1 WIKA SW 27-124-64 WIKA, STEPHANIE L  
\$213.34 LT 19 BK 1 PLEASANT VALLEY EST SE 30-124-64 SECRETARY OF HUD,  
\$1,580.95 LT 20 BK 1 PLEASANT VALLEY EST SE 30-124-64 SECRETARY OF HUD,  
\$165.71 LT 1 BREWER'S 1ST SD SE 32-125-64 (4.1569 AC) GAGE, DAVID C  
\$23,320.37 GRAVES OL'S A-B-C SW 34-124-64 ARROW ENTERPRISES, LLC,  
\$660.59 KUNTZ OL1 SW 34-124-64 KUNTZ, DONALD J.  
\$1,611.04 NE 36-124-64 NOLTNER, JOHN W.  
\$156.99 LT 3 MOHR'S 2ND SD SE 36-124-64 INC PART MOHR EMERGENCY WATERSHED EASEMENT (61.15 AC) NOLTNER, JOHN W.  
\$546.84 LT 2 ROHR 3RD SD SW 36-124-64 (MOHRS OL 5A) ROHR, TODD  
\$476.20 LT 3 ROHR 3RD SD SW 36-124-64 (MOHRS OL 5A) INC PT MOHR'S CONS EASE TR ROHR, TODD  
\$369.05 LT 10-11 BK 5 HECLA VLG GREVLON, DAVE N TRUST AGREEMENT,  
\$204.46 LT 1-2 BK 8 SD OF BK 8-10 HECLA VLG MATTESON, GARY  
\$309.36 LT 5 BK 11 OF PLAT BK 11-16 INCLUSIVE & OLS C, D & E HECLA WAMPLER, DALE  
\$143.00 S2 LT 1 & E2 S2 LT 2 BK 26 HECLA VLG MURRAY, ANDREW M  
\$693.35 LT 5-6 BK 31 OF PLAT N2 BK 11 & S2 BK 17-20 & BK 27-34 INC & OL F-L INC HECLA VLG KIPP, KIM M  
\$345.43 LT 6-7 BK 35 SD N2 BK 25 & 35-46 & OL M HECLA VLG CLAEYS, MICHAEL PAUL  
\$1,459.53 LT 1-2 BK 37 SD N2 BK 25 & 35-46 & OL M HECLA VLG HOWLAND, MAVIS J  
\$40.08 LT 10 BK 55 HECLA VLG SCHROEDER, JOHN J  
\$40.08 LT 11 BK 55 HECLA VLG SCHROEDER, JOHN J  
\$1,195.19 LT 4-6 BK 1 ORIG PL CLAREMONT TRAYLOR, MATTHEW A  
\$35.60 LT 7-8 BK 1 ORIG PL CLAREMONT TRAYLOR, MATTHEW A  
\$62.21 LT 7-8 BK 3 ORIG PL CLAREMONT YABLONSKI, JUSTIN  
\$93.58 LT 5-6 BK 6 ORIG PL CLAREMONT BOHLMANN, TARA  
\$80.10 LT 9 EX 25'X30' & LT 10-12 BK 6 ORIG PL CLAREMONT FESER, THOMAS C  
\$13.17 LT 9 BK 11 ORIG PL CLAREMONT YABLONSKI, JUSTIN  
\$165.65 LT 10 BK 11 ORIG PL CLAREMONT YABLONSKI, JUSTIN  
\$165.65 LT 11 BK 11 ORIG PL CLAREMONT YABLONSKI, JUSTIN  
\$1,619.42 E 5' LT 14 & LT 15-18 BK 11 ORIG PL CLAREMONT SCHANTZ & JONES INC,  
\$21.66 LT 12 BK 12 ORIG PL COLUMBIA HERTHER, DERRICK M.  
\$209.52 BROADWAY PECKS 1ST ADD LTS 16,18 ACKERMAN, DANIEL  
\$33.40 LAKE BOULEVARD PECKS 1ST ADDN. LOTS 108 & 110 HANNA, NINA  
\$305.56 2ND AVE PECKS 3RD ADD S 100' LT 232-236 & 1/2 VAC 2ND ST WAGNER, BEN  
\$281.33 MEINTS OL 1 SW 21-125-62 W OF RR (5.92AC) MITCHELL, CURTIS  
\$686.28 SW 21-125-62 W OF RR EX MEINTS OL 1 INC RR ROW (29.14AC) MITCHELL, CURTIS  
\$340.11 LT 1-2 BK 2 STRATFORD ZIMMERMAN, GAIL  
\$967.95 LT 6 BK 4 STRATFORD DUENWALD, MARY  
\$197.12 LT 2-4 BK 7 STRATFORD BUSCH, JORDAN  
\$186.12 LT 1-4 BK 9 STRAT-

FORD JOHNSON, JOHN R  
\$1,085.76 LT 4-6 BK 11 STRATFORD VITENSE, DAVID A  
\$582.93 LT 1 ACKERMAN-WOLFF ADD SW 22-124-61 ACKERMAN, JON  
\$1,729.97 SW 3-128-61EX LAND PLATTED DANIELS, TODD J.  
\$389.69 NE 4-128-61 EX LAND DEEDED & PLATTED (N 53 RD & 11.5' EX LAND DEEDED & PLATTED) DANIELS, TODD J.  
\$985.03 N2 NW 10-128-61 DANIELS, TODD J.  
\$156.79 LT 2 SCHROEDER ADD SW 27-128-61 SCHROEDER, BRENT  
\$730.09 LT 1-3 KEYES OL WESTPORT STORM, HERMAN E  
\$18.37 LT 1 GERLACHS 1ST ADD BRETSCHE, DERIK M  
\$409.92 LT 3 BK 8 WESTPORT HAM, KEVIN G.  
\$456.35 SW 90' LT 1 BK 9 WESTPORT PERLEBERG, RICK  
\$10.88 SE 25' OF SW 90' LT 2 BK 9 WESTPORT PERLEBERG, RICK  
\$1,538.56 LT 2 MATTESONS 1ST SD OF LT 1 EX NE PT & LT 1-2 MATTESONS 2ND SD OF LT 1 WESTPORT (9.52AC) DELZER, CHAD D  
\$15.20 PT LT 3 MATTESONS 2ND SD BEG 110.5' SW FROM NE CORNER LT 3, 50' NW AT RIGHT ANGLE TO SE  
LINE LT 3 & SOUTHWESTERLY TO S LINE LT 3 MATTESONS 2ND SD (.35AC) MARSKO, DEAN A  
\$966.17 LT 3 NORTH CENTRAL FARMERS ELEVATOR ADD (RR ROW) ROBERTS, BRADY J  
\$1,207.87 W 25' OF N 54' LT 2 & N 54' LT 3-4 BK 5 WARNER ATKINSON, TEDDY JOE  
\$452.39 LT 2 GRAHAM/HASE ADD BK 12 & 8' V/A WARNER ESKE, RIECK J  
\$199.64 LT 4 BK 1 PRAIRIEWOOD VLG SE 33-124-63 MEHLHAFF, CHARLES C  
\$31.83 LT 6 BK 3 PRAIRIEWOOD VLG SE 33-124-63 HENGEL FB LLC,  
\$33.52 LT 7 BK 3 PRAIRIEWOOD VLG SE 33-124-63 HENGEL FB LLC,  
\$3,296.15 #2 BLUE SKY TOWNHOUSE CONDO LT 16-17 BK 11 PRAIRIEWOOD VLG SE 33-124-63 (UNIT & GARAGE) FRANK, STEVEN R.  
\$8,330.30 LT 1-6 HAGERTY'S SD OF LT 1-2 & LT 7-12 HAGERTY'S SD OF LT 11-12 & LT 3 & LT 10 BK 28 1ST ADD APO LLC,  
\$1,564.41 LT 9 BK 6 HAPI 3RD CENTRAL SD W2 NE 30-123-63 MERCHANT, JEREMY  
\$1,453.35 LT 11 BK 6 HAPI 3RD CENTRAL SD W2 NE 30-123-63 BABCOCK, MICHAEL J  
\$221.24 LT 2 BK 9 GARDEN PARK ADD WELLMAN, DERRICK  
**PUBLIC UTILITY:**  
\$6.34 OUTSIDE CORP-AT&T AT&T COMMUNICATIONS,  
**BUILDINGS ON LEASED SITE:**  
\$10.03 BOLS LT 1 SCHB ADD W2 N2 SW 2-127-64 W OF RR EX H1 1972 MEDALLION NAPTON, DANIEL  
\$47.42 BOLS LT 11-12 BK 1 REYNARD'S ADD BARNARD NE 13-126-64 1972 HOFH WILSON, JESSICA OR DOUGLAS, CARL  
\$23.35 BOLS SW 14-127-60 HOOP QUANSET BECK, MATTHEW A  
\$37.50 BOLS LT 1 RANDY STANLEY RPL STANLEY'S OL 1 SW 13-125-61 1985 COME WALKER, THOMAS M  
\$176.52 TACOMA PARK 23-124-62 BOLS (OLD CABIN) #1 WEST SIDE FROM N DEMARCE, WILLIAM G  
\$11.22 TACOMA PARK 23-124-62 BOLS (GARAGE) #9 WEST SIDE FROM N NEWQUIST, DAVID L  
\$208.60 TACOMA PARK 23-124-62 BOLS (SHED) #13 WEST SIDE FROM N NIEMAN, DOUGLAS  
\$648.12 BOLS SW 32-124-60 EX S2 S2 (STEEL BINS) HOWARD, JEFFERY R.  
\$187.26 BOLS SW 3-123-60 1995 FRIENDSHIP HARDER, ADAM, BRIAN OR MICHELLE  
\$100.55 BOLS RR ROW 18-123-61 (QUONSET) ERDMANN, DARRIN L  
\$28.24 BOLS LT 2 BK 2 COX 1ST SD JAMES (LT 28 JAMES OLS) 1976 METAMORA COX, JOSHUA  
\$32.77 BOLS NE 4-123-62 INC PORTION OF CHARLES & NANCY BOYNTON 1ST CONS EASE TR 1975 DETROITER FLOREY, LANE  
\$204.70 BOLS LT 1 HANLON SD NE 20-123-62 1997 SCHULT ROHRBACH, KEVIN (SUBJ TO PRIOR TAXES)  
\$162.70 BOLS LT 1 HANLON SD NE 20-123-62 1981 DETROITER FINLEY, PATRICIA OR GAREY  
\$482.84 BOLS W 888' OF S 988' SW 7-123-64 EX HWY (NON-TITLED MH) SCHERBENSKE, RANDY D  
\$11.33 BOLS LT 3 REMDES ADD MANSFIELD SE 32-121-64 1981 BONAVILLA LEFFORGE, GARY OR JEFF OR SIMONTON, DAWN  
\$159.30 BOLS THE MEADOWS

#3 NE 2-122-64 1991 CHIEF SCHMIDT, PAUL T OR DORIS D  
\$497.22 BOLS THE MEADOWS #7 NE 2-122-64 1996 HIGH ENGSTROM, CARY  
\$82.68 BOLS THE MEADOWS #30 NE 2-122-64 1985 COMMANDER HAAR, TIM  
\$323.49 BOLS THE MEADOWS #35 NE 2-122-64 1995 FRIENDSHIP ERICKSON, JEFF OR TAMMY M  
\$37.88 BOLS THE MEADOWS #36 NE 2-122-64 1979 MARSHFIELD ODEGAARD, DENISE J  
\$11.41 BOLS SW 10-122-64 COMM 42 RODS W OF SE CORNER & E 42 RODS & N 45 RODS & W 19 RODS & SW 50 RODS TO POINT OF BEG 1976 HILLCREST BRICK, ROBERT OR RIECK, RONALD ESTATE  
\$167.58 BOLS LT 17 BK 6 FERNEY SW 31-122-60 1998 FRIENDSHIP ZIMNEY, RICHARD A OR LORRAINE D  
\$55.08 BOLS LT 7-10 BK 38 2ND ADD (FOOD HUT) CUMMINGS, PETER J  
\$150.47 BOLS #3 PARK VLG LT 2 BK 1 PARK VLG 1984 LIBERTY HUBBS, RACHEL J  
\$76.33 BOLS #9 PARK VLG LT 2 BK 1 PARK VLG 1978 ARTCRAFT AYE, PAN  
\$57.71 BOLS #11 PARK VLG LT 2 BK 1 PARK VLG 1979 COLT DIAZ, MODESTO  
\$158.90 BOLS #12 PARK VLG LT 2 BK 1 PARK VLG 1981 DETROITER MONTES VAZQUEZ, MARIA S  
\$311.57 BOLS #103 PARK VLG LT 2 BK 1 PARK VLG 1992 HIGHLAND FERGUSON, BRANDY J  
\$66.37 BOLS #105 PARK VLG LT 2 BK 1 PARK VLG 1974 CLIFTON HARDY, HELEN L  
\$70.06 BOLS #107 PARK VLG LT 2 BK 1 PARK VLG 1979 COLT WIFE, ANDREW  
\$58.47 BOLS #113 PARK VLG LT 2 BK 1 PARK VLG 1978 DETROITER VAZQUEZ, MARIA D  
\$57.54 BOLS #201 PARK VLG LT 2 BK 1 PARK VLG 1971 BELMONT LEFORT, NARCISS  
\$227.53 BOLS #207 PARK VLG LT 2 BK 1 PARK VLG 1995 FRIENDSHIP JOHNSON, MICHAEL OR ANGELA M  
\$71.55 BOLS #302 PARK VLG LT 2 BK 1 PARK VLG 1981 DETROITER ALVAREZ REYES, ROBERTO C  
\$43.48 BOLS #406 PARK VLG LT 2 BK 1 PARK VLG 1971 ADRIAN LEIBEL, LYNN  
\$52.87 BOLS #416 PARK VLG LT 2 BK 1 PARK VLG 1974 HILLCREST KYING, KAY K  
\$43.48 BOLS #507 PARK VLG LT 2 BK 1 PARK VLG 1966 MAGNOLIA HELMS, CHRISTOPHER W  
\$52.87 BOLS #615 PARK VLG LT 2 BK 1 PARK VLG 1974 STATESMAN TAW, KLER  
\$52.87 BOLS #704 PARK VLG LT 2 BK 1 PARK VLG 1973 CHAMPION KAW, DU  
\$52.87 BOLS #713 PARK VLG LT 2 BK 1 PARK VLG 1970 MAGNOLIA ST CLAIR, JOLEEN  
\$64.11 BOLS #801 PARK VLG LT 2 BK 1 PARK VLG 1983 COLT BAIN, LARRY  
\$48.15 BOLS #802 PARK VLG LT 2 BK 1 PARK VLG 1970 HOFH MAY, KI LER  
\$117.00 BOLS #814 PARK VLG LT 2 BK 1 PARK VLG 1981 MODULINE GREER, RON OR VICKIE LYNN  
\$339.62 BOLS #1003 PARK VLG LT 2 BK 1 PARK VLG 1997 HOMARK UNDERBERG, JOSELYN OR DEBRA A  
\$433.64 BOLS #1009 PARK VLG LT 2 BK 1 PARK VLG 1996 HIGHLANDER CADY, TONI M  
\$570.22 BOLS #1024 PARK VLG LT 2 BK 1 PARK VLG 1996 FRIENDSHIP LECOMPTE, PATRICIA K  
\$555.57 BOLS #1210 PARK VLG LT 2 BK 1 PARK VLG 1996 CANTERBURY MEE, KAW  
\$505.29 BOLS #1218 PARK VLG LT 2 BK 1 PARK VLG 1992 FRIENDSHIP SCHAUNAMAN, SHARON  
\$465.95 BOLS #1219 PARK VLG LT 2 BK 1 PARK VLG 2001 FRIENDSHIP LOUT, TERRY L  
\$624.25 BOLS #1234 PARK VLG LT 2 BK 1 PARK VLG 1997 HIMI WISE, ASHLY (SUBJ TO PRIOR TAXES)  
\$342.02 BOLS #1235 PARK VLG LT 2 BK 1 PARK VLG 1996 HIMI MITZEL, MATTHEW D  
\$48.15 BOLS #17 EISENBEIS CT S 300' LT 1 PIERSONS SD & N2 V/S (1ST AVE SE) 18-123-63 EX HWY 1969 KENWOOD EPARD, JEREMY  
\$517.87 BOLS #29 EISENBEIS CT S 300' LT 1 PIERSONS SD & N2 V/S (1ST AVE SE) 18-123-63 EX HWY 1999 CHAMPION KINNEY, DAN  
\$57.54 BOLS #33 EISENBEIS CT S 300' LT 1 PIERSONS SD & N2 V/S (1ST AVE SE) 18-123-63 EX HWY 1973 HOFH TWO HEARTS, EMERY ESTATE  
\$55.65 BOLS #51 EISENBEIS CT S 300' LT 1 PIERSONS SD & N2 V/S (1ST AVE SE) 18-123-63 EX HWY 1973 FALCON HERNANDEZ, JIMENEZ M  
\$140.89 BOLS #69 EISENBEIS

CT S 300' LT 1 PIERSONS SD & N2 V/S (1ST AVE SE) 18-123-63 EX HWY  
1983 MODULINE SOBESKI, KENNETH L  
\$116.26 BOLS #71 EISENBEIS CT S 300' LT 1 PIERSONS SD & N2 V/S (1ST AVE SE) 18-123-63 EX HWY  
1986 MEDALLION TWIGG, TAMI A OR JOIE HOLZER  
\$52.87 BOLS #85 EISENBEIS CT S 300' LT 1 PIERSONS SD & N2 V/S (1ST AVE SE) 18-123-63 EX HWY 1970 AMERICAN KRAMP, ERIC  
\$43.48 BOLS 100 EISENBEIS CT S 300' LT 1 PIERSONS SD & N2 V/S (1ST AVE SE) 18-123-63 EX HWY 1971 ARTCRAFT ESCOBAR GRANADO, JOSE LUIS  
\$234.65 BOLS #104 EISENBEIS CT S 300' LT 1 PIERSONS SD & N2 V/S (1ST AVE SE) 18-123-63 EX HWY 1985 BROOKSHIRE SAY, HARRY  
\$43.48 BOLS E2 LT 6-10 BK 27 ROCHES EAST SIDE ADD 1973 ROLLOHOME GRESETH, CAROLE A  
\$192.93 BOLS LAKESIDE EST W2 26-123-64 1983 REDMAN ABERDEEN MOBILE HOME PARK,  
\$177.29 BOLS LAKESIDE EST W2 26-123-64 1982 DETROITER ABERDEEN MOBILE HOME PARK,  
\$43.48 BOLS LAKESIDE EST W2 26-123-64 1973 HILLCREST OHN, MERRY  
\$52.87 BOLS LAKESIDE EST W2 26-123-64 1975 FLAMINGO CROWE, JAMANE  
\$12.62 BOLS LAKESIDE EST W2 26-123-64 1978 RITZCRAFT ESSER, KATRINA L OR ANASTASIA  
\$643.82 BOLS LAKESIDE EST W2 26-123-64 1994 SCHULT (NO TITLE) ABERDEEN MOBILE HOME PARK,  
\$33.06 BOLS LAKESIDE EST W2 26-123-64 1983 MODULINE ABERDEEN MOBILE HOME PARK,  
\$185.18 BOLS LAKESIDE EST W2 26-123-64 1984 MODULINE 65225AB WALD, ZACH  
\$43.48 BOLS LAKESIDE EST W2 26-123-64 1974 ROLLOHOME KIRTH, MATT  
\$68.48 BOLS LAKESIDE EST W2 26-123-64 1972 DETROITER WYLY, KRISTIE OR FUNK, DARRICK  
\$44.48 BOLS LAKESIDE EST W2 26-123-64 1973 BROADMORE MOORE, SHAUN M OR LUDWIG, ARIEL  
\$99.35 BOLS LAKESIDE EST W2 26-123-64 1977 CHAMPION BLAIR, HEATHER  
\$50.98 BOLS LAKESIDE EST W2 26-123-64 1976 BUDDY WILSON, BERT  
\$400.92 BOLS LAKESIDE EST W2 26-123-64 1994 SCHULTZ CROUSE, DARIN OR GRENZ, DAVID OR SHIRLEY  
\$89.74 BOLS LAKESIDE EST W2 26-123-64 1978 SCHULTZ THOMPSON, HEIDI  
\$49.10 BOLS LAKESIDE EST W2 26-123-64 1972 SCHULT ROTT, JAIMIE  
\$11.62 BOLS LAKESIDE EST W2 26-123-64 1971 DICKMAN DOLL, NALEEN ESTATE  
\$50.10 BOLS LAKESIDE EST W2 26-123-64 1972 SHARVAL ROBERSON, JONATHAN H OR CORTNEY A  
\$75.25 BOLS LAKESIDE EST W2 26-123-64 1980 GUERDON BLAIR, AMANDA  
\$504.01 BOLS LAKESIDE EST W2 26-123-64 1993 FRIENDSHIP ABERDEEN ESTATES LLC,  
\$40.75 BOLS LAKESIDE EST W2 26-123-64 1973 TITAN VOELLER, SCOTT OR PHYLLIS  
\$67.07 BOLS LAKESIDE EST W2 26-123-64 1978 SHARLO MOORE, SHAUN M OR LUDWIG, ARIEL  
\$536.96 BOLS LAKESIDE EST W2 26-123-64 1993 HIGH ABERDEEN ESTATES LLC,  
\$52.87 BOLS LAKESIDE EST W2 26-123-64 1973 RUSHMORE QUIRAM, ALLISON  
\$575.47 BOLS LAKESIDE EST W2 26-123-64 1999 CENH SERR, ANTHONY OR LYNAE  
\$124.61 BOLS LAKESIDE EST W2 26-123-64 1979 DETROITER ELAM, TAMALYN  
\$366.32 BOLS LAKESIDE EST W2 26-123-64 1980 REGAL ABERDEEN ESTATES LLC,  
\$582.82 BOLS LAKESIDE EST W2 26-123-64 2002 HIGHLAND ABERDEEN PARKS LLC,  
\$139.87 BOLS LAKESIDE EST W2 26-123-64 1985 CHII ERICKSON, JAY  
\$58.47 BOLS LAKESIDE EST W2 26-123-64 1975 HOLLY FRANKS, CHARLES ESTATE  
\$341.50 BOLS LAKESIDE EST W2 26-123-64 1989 MEDALLION ABERDEEN ESTATES LLC,  
\$34.13 BOLS LAKESIDE EST W2 26-123-64 1974 DETROITER HART, TIMOTHY J  
\$363.60 BOLS LAKESIDE EST W2 26-123-64 1995 FRIENDSHIP ABERDEEN MOBILE HOME PARK,  
\$50.10 BOLS LAKESIDE EST W2 26-123-64 1973 RUSHMORE DURAND, SUSAN OR SHANNON JAMES KILBER  
\$61.91 BOLS LAKESIDE EST W2 26-123-64 1976 REGAL LEE,

LISA OR JIM  
\$52.87 BOLS LAKESIDE EST W2 26-123-64 1975 MARLETTE REGULA, ELI  
\$142.65 BOLS LAKESIDE EST W2 26-123-64 1998 BAY SPRINGS MONTES VAZQUEZ, MARIA A  
\$52.87 BOLS LAKESIDE EST W2 26-123-64 1965 ALMA SHERIDAN, LEXUS R  
\$34.13 BOLS LAKESIDE EST W2 26-123-64 1973 MARSHFIELD ASSARSSON, TYLOR J (SUBJ TO PRIOR TAX)  
\$536.63 BOLS LAKESIDE EST W2 26-123-64 1997 DUTCH ABERDEEN ESTATES LLC,  
\$12.62 BOLS LAKESIDE EST W2 26-123-64 1973 ASTRA ARNOLD, RONALD ESTATE OR SANDRA  
\$24.74 BOLS LAKESIDE EST W2 26-123-64 1972 GREAT LAKES SCHAIBLE, HARLEY ESTATE  
\$408.72 BOLS LAKESIDE EST W2 26-123-64 1993 CHAMPION ABERDEEN PARKS LLC,  
\$112.68 BOLS LAKESIDE EST W2 26-123-64 1979 ACRAFT CHRIST, SCOTT R  
\$481.62 BOLS LAKESIDE EST W2 26-123-64 1993 HIGHLAND BBB FINANCIAL LLC,  
\$43.48 BOLS LAKESIDE EST W2 26-123-64 1975 BUDDY NELSON, TARA  
\$49.10 BOLS LAKESIDE EST W2 26-123-64 1974 VANTAGE KENNY, EILEEN  
\$507.53 BOLS LAKESIDE EST W2 26-123-64 1994 SCHULT ABERDEEN ESTATES LLC,  
\$133.54 BOLS LAKESIDE EST W2 26-123-64 1982 ARTC ABERDEEN ESTATES LLC,  
\$277.62 BOLS LAKESIDE EST W2 26-123-64 1990 CHIEF ABERDEEN ESTATES LLC,  
\$478.46 BOLS LAKESIDE EST W2 26-123-64 1974 MODULINE ABERDEEN MOBILE HOME PARK,  
\$144.71 BOLS LAKESIDE EST W2 26-123-64 1982 SHARLO NOBLE, CHRISTINE L  
\$124.63 BOLS LAKESIDE EST W2 26-123-64 1985 MODULINE BBB FINANCIAL LLC,  
\$111.52 BOLS LAKESIDE EST W2 26-123-64 1979 GREAT LAKES ELLENBECKER, DALLAS  
\$58.47 BOLS LAKESIDE EST W2 26-123-64 1973 MARSHFIELD RERNLEITNER, KENNETH L  
\$58.47 BOLS LAKESIDE EST W2 26-123-64 1973 HILLCREST BADER, KRISTINA E  
\$319.88 BOLS LAKESIDE EST W2 26-123-64 1993 CHAMPION POULIOT, THERESA  
\$325.45 BOLS LAKESIDE EST W2 26-123-64 1986 SCHULTZ ABERDEEN MOBILE HOME PARK,  
\$52.87 BOLS LAKESIDE EST W2 26-123-64 1976 SHANGRILA HAMMOND, JUSTIN D  
\$62.32 BOLS LAKESIDE EST W2 26-123-64 1981 SHARLO DEVINE, LAURA OR GARY KNAPP ESTATES  
\$58.47 BOLS LAKESIDE EST W2 26-123-64 1974 DETROITER DOERR, MELANIE  
\$147.85 BOLS LAKESIDE EST W2 26-123-64 1978 ARTCRAFT BALDWIN, LARK L  
\$503.47 BOLS LAKESIDE EST W2 26-123-64 2002 LIBH ABERDEEN ESTATES LLC,  
\$70.05 BOLS LT 7-8 BK 53 & LT 6 RPL AVES OL WB HAYES & LT 7-8 BK 56 OL WB HAYES 2ND 1974 MODULINE DOBBINS, LINDA ESTATE  
\$15.87 BOLS LT 5A BK 3 ORIG PL (RPL L 3-5) FREDERICK 1972 INVADER HART, TIMOTHY J OR JEANETTE OR SITTER, DANA  
\$251.84 BOLS LT 5 BK 10 ORIG PL FREDERICK 1987 MEDALLION MOORE, JAMES OR SERFLING, MAE OR TORRENCE, ART  
\$79.97 BOLS LT 7-8 BK 10 ORIG PL FREDERICK 1971 HOFH GOLNITZ, DARRELL D  
\$31.78 BOLS LT 8-9 BK 11 ORIG PL FREDERICK 1970 BONAVILLA COX, THERSIA  
\$13.87 BOLS W2 LT 3 & LT 4 & E2 LT 5 BK 27 1ST ADD FREDERICK E2 11-127-64 1974 BONNAVILLA GHOLSON, TISA LOUISE  
\$58.84 BOLS W2 LT 3 & LT 4 & E2 LT 5 BK 27 1ST ADD FREDERICK E2 11-127-64 1972 SHAN GHOLSON, TISA LOUISE  
\$564.83 BOLS LT 4&5 BK 39 1ST ADD & V/S FREDERICK 1994 ATLANTIC DALLENBACH, ROBERT W (SUBJ TO PRIOR TAXES)  
\$20.35 BOLS LT 2 PATTON'S 1ST SD SW 26-125-64 1986 FRIENDSHIP PATTON, SHAWN  
\$217.97 BOLS COUNTRY VLG #1 SW 34-124-64 1993 FRIENDSHIP CATALANO, STEVEN G  
\$40.25 BOLS COUNTRY VLG #10 SW 34-124-64 1975 WESTERN LINDGREN, AMANDA LYNN  
\$867.83 BOLS COUNTRY VLG #11 SW 34-124-64 2012 CHAMPION ARROW ENTERPRISES, LLC,  
\$41.25 BOLS COUNTRY VLG #20 SW 34-124-64 1975 SCHULT RUPPERT, GREGORY OR ADRIANNA RAYE

\$490.95 BOLS COUNTRY VLG #23 SW 34-124-64 2008 MANSION ARROW ENTERPRISES, LLC,  
\$490.95 BOLS COUNTRY VLG #24 SW 34-124-64 2008 MANSION ARROW ENTERPRISES, LLC,  
\$697.68 BOLS COUNTRY VLG #25 SW 34-124-64 2010 FRIENDSHIP ARROW COMPANIES LLC,  
\$533.44 BOLS COUNTRY VLG #30 SW 34-124-64 2009 MANSION ARROW ENTERPRISES, LLC,  
\$530.29 BOLS COUNTRY VLG #32 SW 34-124-64 2002 SCHULT ARROW ENTERPRISES, LLC,  
\$490.95 BOLS COUNTRY VLG #33 SW 34-124-64 2008 MANSION ARROW ENTERPRISES, LLC,  
\$598.61 BOLS COUNTRY VLG #34 SW 34-124-64 1994 FRIENDSHIP ARROW ENTERPRISES, LLC,  
\$647.04 BOLS COUNTRY VLG #43 SW 34-124-64 2010 FRIENDSHIP ARROW COMPANIES LLC,  
\$538.53 BOLS COUNTRY VLG #45 SW 34-124-64 2002 SCHULT ARROW ENTERPRISES, LLC,  
\$530.29 BOLS COUNTRY VLG #49 SW 34-124-64 2002 SCHULT ARROW ENTERPRISES, LLC,  
\$478.86 BOLS COUNTRY VLG #51 SW 34-124-64 2002 SCHULT ARROW ENTERPRISES, LLC,  
\$370.88 BOLS COUNTRY VLG #64 SW 34-124-64 1998 FRIENDSHIP MARTINMAAS, JENNIFER  
\$244.99 BOLS COUNTRY VLG #76 SW 34-124-64 1998 FRIENDSHIP SALZER, STEVEN AND ANN  
\$710.85 BOLS COUNTRY VLG #80 SW 34-124-64 2010 FRIENDSHIP ARROW COMPANIES LLC,  
\$697.68 BOLS COUNTRY VLG #81 SW 34-124-64 2010 FRIENDSHIP ARROW COMPANIES LLC,  
\$530.39 BOLS COUNTRY VLG #93 SW 34-124-64 2002 SCHULT ARROW ENTERPRISES, LLC,  
\$327.78 BOLS COUNTRY VLG #107 SW 34-124-64 2002 CHAMPION HOME ARROW ENTERPRISES, LLC,  
\$398.29 BOLS COUNTRY VLG #112 SW 34-124-64 2000 HIGHLAND ARROW ENTERPRISES, LLC,  
\$470.78 BOLS COUNTRY VLG #116 SW 34-124-64 1998 FRIENDSHIP ARROW ENTERPRISES, LLC,  
\$533.44 BOLS COUNTRY VLG #127 SW 34-124-64 2009 MANSION ARROW ENTERPRISES, LLC,  
\$697.68 BOLS COUNTRY VLG #132 SW 34-124-64 2010 FRIENDSHIP ARROW COMPANIES LLC,  
\$697.68 BOLS COUNTRY VLG #135 SW 34-124-64 2010 FRIENDSHIP ARROW COMPANIES LLC,  
\$557.74 BOLS COUNTRY VLG #136 SW 34-124-64 2003 SCHULT ARROW ENTERPRISES, LLC,  
\$533.44 BOLS COUNTRY VLG #144 SW 34-124-64 2009 MANSION ARROW ENTERPRISES, LLC,  
\$228.55 BOLS COUNTRY VLG #147 SW 34-124-64 1998 DESIGN SPACE STICK BUILT NOT TITLED (OFFICE) ARROW ENTERPRISES, LLC,  
\$736.50 BOLS COUNTRY VLG #148 SW 34-124-64 1999 FRIENDSHIP ARROW ENTERPRISES, LLC,  
\$490.95 BOLS COUNTRY VLG #156 SW 34-124-64 2008 MANSION ARROW ENTERPRISES, LLC,  
\$478.76 BOLS COUNTRY VLG #157 SW 34-124-64 2002 SCHULT ARROW ENTERPRISES, LLC,  
\$697.68 BOLS COUNTRY VLG #159 SW 34-124-64 2010 FRIENDSHIP ARROW COMPANIES LLC,  
\$710.85 BOLS COUNTRY VLG #165 SW 34-124-64 2010 FRIENDSHIP ARROW COMPANIES LLC,  
\$710.85 BOLS COUNTRY VLG #168 SW 34-124-64 2010 FRIENDSHIP ARROW COMPANIES LLC,  
\$465.01 BOLS LT 9 EX 25'X30' & LT 10-12 BK 6 ORIG PL CLAREMONT 2002 ATLANTIC FESER, THOMAS C OR JESSICA  
\$68.07 BOLS BROADWAY PECKS 1ST ADD LTS 16,18,20,22,24,26,28 1969 DETROITER ACKERMAN, DANIEL  
\$12.87 BOLS LT 1-4 BK 9 STRATFORD 1993 HIGHLAND JOHNSON, JEFFREY D ESTATE  
\$153.89 BOLS LT 1-4 BK 9 STRATFORD 1984 FRIENDSHIP JOHNSON, JOHN R ESTATE  
\$202.26 BOLS S2 SE 30-124-61 (BIN) PRAY, CHAD  
\$226.32 BOLS LT 2 SCHROEDER ADD SW 27-128-61 2004 FRIENDSHIP SCHROEDER, BRENT OR DORA  
PUBLISHED ONCE AT THE APPROX COST OF \$631.80. 19518

## Groton School Dec. 14, 2020

### Meeting Minutes

UNOFFICIAL PROCEEDINGS OF BOARD OF EDUCATION GROTON AREA SCHOOL DISTRICT NO. 06-6  
REGULAR MEETING  
December 14, 2020

President Smith called the meeting to order at 7:00 p.m. in the Elementary Commons Area. Members present: Fliehs, Harder, Gengerke, Pharis, Rix, Smith and Weismantel. Others present were Supt. J. Schwan, Principals B. Schwan and Sombke and Business Manager Weber.

Moved by Weismantel, second Gengerke to approve the agenda as presented. Motion carried.

Pursuant to SDCL 23-3, there was no potential conflict disclosure reported.

Moved by Rix, second Pharis to approve consent agenda items: November 9, 2020 minutes, bills, financial report, custodial report, investments, transportation report, and school lunch report, public school exemption #21-15 and open enrollment #21-18. Motion carried.

**GENERAL FUND:** Net Salary – 192,714.59; FIT – 16,569.89; Medicare – 7,203.72; FICA – 30,802.20; American Funds – 542.80; SD Retirement – 30,985.46; Health Savings Account – 100.00; Waddell & Reed – 1,390.00; Horace Mann – 1,277.61; Thrivent – 250.00; AFLAC – 3,442.66; Delta Dental – 4,432.45; SD Supplemental Retirement – 977.29; Wellmark – 62,428.97; Standard – 717.22; Wage Works – 666.65; Avesis – 275.30; Aberdeen Awards – awards, 186.00; AC Supply – materials, 83.08; Advance Auto – parts, 153.05; Allied Climate Pros – boiler repairs, 10,271.44; Amazon – supplies, 729.07; Boston Fern – flowers, 84.95; Churchill, Manolis, Freeman, Kludt, Shelton – services, 931.17; Cole Papers – supplies, 667.52; Custodial Fund – advanced pays, 40,970.51; Dakota Supply – supplies, 217.16; Dependable Sanitation – service, 1,238.00; Destination Imagination – fees, 160.00; Joann Donley – testing, 158.85; Adam Franken – meals, 44.41; Green Iron – repairs, 1,768.44; GASD – bank charges, 88.45; GDI – printing, 110.96; Hilliard – supplies, 1,889.52; Steve Hjelling – fee, 33.07; Horizon Equipment – services, 225.00; J.W. Pepper – music, 76.24; Jeff's District & Drain – repairs, 594.00; Jostens – diploma covers, 621.01; Jim Lane – fee, 160.00; Locke Electric – repairs, 1,758.16; Lori's – cards, 11.88; Matheson Tri Gas – supplies, 1.83; Mike N Jo's – repairs, 101.90; NSU – registration, 70.00; Northside Implement – repairs, 541.94; Northwestern Energy – natural gas, 3,088.01; Pfitzer – services, 1,256.85; Playscripts – supplies, 307.75; Anissa Poor – fee refund, 43.25; Prorate Services – testing, 75.00; QQP – stamps, 85.70; Brian Schuring – fee, 35.00; Joseph Schwan – fee, 50.00; SDHSA – reimbursement, 56.54; SDI Innovations – supplies, 101.10; Stan Houston – supplies, 112.71; Taylor Music – repairs, 322.41; Teacher Innovations – planbook.com, 1,057.50; WageWorks – claim fees, 1,331.25. Total General Fund – \$426,647.49.

**CAPITAL OUTLAY:** A&B Business Solutions – print agreement, 1,976.04; Amazon – equipment, 371.79; Colliers – fee, 400.00; Custodial Fund – advanced pays, 3,446.95; Dakota Supply – water cooler, 1,164.32; Follett – books, 996.34; Gopher – agility balls, 58.44; School Specialty – COVID equipment, 238.52; Sipple Cabinets – services, 542.35; Teacher Innovations – credit, -1,057.50; Lindsey Tietz – fee, 10.50. Total Capital Outlay Fund – \$8,147.75.

**SPECIAL ED:** Net Salary – 32,916.11; FIT – 2,790.97; Medicare – 1,222.86; FICA – 5,228.94; SD Retirement – 5,326.46; Waddell & Reed – 200.00; AFLAC – 830.11; Delta Dental – 707.34; SD Supplemental Retirement – 100.00; Wellmark – 8,057.78; Standard – 219.53; Wage Works – 259.16; Avesis – 60.64; Amazon – supplies, 9.91; Avera St Luke's – services, 12,062.25; Custodial Fund – advanced pays, 2,646.00; Dollar General – supplies, 23.30; Jaimie Mitchell – supplies, 13.36; School Specialty – supplies, 10.50; Judy/Gene Williamson – mileage, 635.04. Total Special Education Fund – \$73,320.26.

**ENTERPRISE:** Food Service Net Salary – 6,403.63; FIT – 429.35; Medicare – 227.34;

FICA – 972.06; SD Retirement – 813.64; AFLAC – 218.49; Wellmark – 1,526.00; Standard – 3.84; Wage Works – 8.33; Avesis – 39.85; Gimbo Bakery – food, 259.62; Cintas – services, 61.34; Custodial Fund – advanced pays, 1,372.88; CWD – food, 2,321.70; East Side Dairy – milk, 2,154.65; Reinhart – food, 3,774.76; SD Dept of Ed – food, 217.66; US Foods – food, 2,686.25. Total Food Service – \$23,491.39. OST Net Salary – 1,795.04; FIT – 121.58; Medicare – 63.88; FICA – 273.08; SD Retirement – 191.48; AFLAC – 163.93; Wellmark – 671.00; Standard – 23.28; Custodial Fund – advanced pays, 7,025.00; Driven Coffee – supplies, 97.73; Reid Johnson Fundraising – prizes, 201.09. Total OST – \$10,627.09. Total Enterprise Funds – \$34,118.48.

**CUSTODIAL FUND:** Total – \$62,577.02.

**RECEIPTS:** Local Sources, Taxes – 1,950,881.66; Other Local Sources – 58,135.20; County Sources – 2,376.53; State Sources – 0.00; Federal Sources – 16,852.32. Total Receipts – \$2,028,245.71.

Members of the public are allowed five minutes to address the board on any topic of their choice. With no public members requesting to speak, the board proceeded with their agenda items.

The board continued discussion and necessary action on District response to COVID-19 issues including quarantine protocols, FFCRA Leave entitlements, and winter sports. Moved by Weismantel, second Rix to limit winter attendance to six tickets per event participant for regular season events and four tickets for double header contests and multi-team events. Motion carried.

The board requests that all attending participants wear face masks and practice social distancing protocols to ensure the safety of student athletes throughout the winter sports season.

Following topics were discussed in administrative reports: COVID – 19 case data, Abbott BinaxNOW rapid testing, 2021 Legislative Sessions update, OST update, DIBEL and STAR reading/math assessments, National Career Readiness Certificate Program, SDCNA, 2021-22 Curriculum Guidebook and District audit update.

The board received a request from Langford Area School District to form a football cooperative beginning in the fall of 2021. To align with SDHSA scheduling requirements, the cooperative would need to exist for three years. President Smith appointed Gengerke, Pharis and Weismantel to meet with Langford Area and report at the next meeting. No other action was taken.

2021-22 School Calendar issues were discussed. Superintendent Schwan will create several 4-day and 5-day calendar options.

Smith declared a recess at 9:19 pm and the board returned to regular session at 9:27 pm.

Moved by Gengerke, second Pharis to go into executive session at 9:28 pm, pursuant to SDCL 1-25-2(4) for negotiations and SDCL 1-25-2(1) for personnel. Motion carried.

Smith declared the board out of executive session at 10:37 pm.

The board reviewed a letter of resignation from Kristi Anderson effective at the end of the 2020-21 school year. Moved by Gengerke, second Weismantel to table the issue until the first meeting in March 2021. Motion carried.

Moved by Gengerke, second Harder to approve addenda to

2020-21 negotiated agreements for GTA, GASA and Administrative Staff. Motion carried.

Moved by Weismantel, second Pharis to approve contract amendments for salaried staff members, Loren Bahr, Brandon Clocksene, Beth Gustafson, Mike Nehls and Kristi Peterson. Motion carried.

Moved by Rix, second Harder to adjourn at 10:40 pm. Motion carried.

M. J. Weber, Business Manager  
Steven R. Smith, President  
The addition of signatures to this page verifies these minutes as official.

Published once at the total approximate cost of \$124.28. 19519.

## MONTHLY DISTRICT FINANCIAL REPORT FOR GROTON AREA SCHOOL DISTRICT 06-6 For the reporting period beginning July 1, 2020, and ending November 30, 2020

Description.....	General Fund	Assigned Gen Funds	Capital Outlay	Special Education	Bond Redemption	Enterprise Fund	Custodial Fund	Total for District
1. Beginning Balance .....	1,310,020.82	166,442.24	1,494,432.18	282,971.70	157,818.14	51,718.27	161,560.84	3,624,964.19
a. checking .....	1,310,020.82	166,442.24	1,494,432.18	282,971.70	157,818.14	51,718.27	161,560.84	3,624,964.19
b. petty cash .....	0.00	0.00	0.00	0.00	0.00	0.00	0.00	0.00
2. Transfers in .....								
3. Revenue to date .....	2,171,839.09	8,141.81	640,532.16	327,343.64	72,207.45	100,488.69	265,258.00	3,585,810.84
4. Total accounted for .....	3,481,859.91	174,584.05	2,134,964.34	610,315.34	230,025.59	152,206.96	426,818.84	7,210,775.03
5. Transfers out .....								
6. Expenditures to date .....	1,685,117.42	36,532.38	1,061,693.02	258,246.90	207,086.25	87,540.06	365,554.76	3,701,770.79
a. encumbrances .....	0.00	0.00	0.00	0.00	0.00	0.00	0.00	0.00
b. disbursements .....	1,685,117.42	36,532.38	1,061,693.02	258,246.90	207,086.25	87,540.06	365,554.76	3,701,770.79
7. Ending Balance .....	1,796,742.49	138,051.67	1,073,271.32	352,068.44	22,939.34	64,666.90	61,264.08	3,509,004.24
a. checking .....	1,796,742.49	138,051.67	1,073,271.32	352,068.44	22,939.34	64,666.90	61,264.08	3,509,004.24
b. petty cash .....	(0.00)	0.00	0.00	0.00	0.00	0.00	0.00	(0.00)
November Receipts .....	1,058,536.64	545.00	545,542.61	289,117.70	65,125.43	29,324.71	40,053.62	2,028,245.71
November Expenses .....	409,729.87	2,012.20	639,168.10	73,298.08	207,086.25	20,111.30	62,577.02	1,413,982.82
Custodial Checking .....		61,264.08						
District Checking .....		1,947,740.16						
Certificate of Deposit .....		1,500,000.00						
Total all Funds .....		3,509,004.24						

2020-21 negotiated agreements for GTA, GASA and Administrative Staff. Motion carried.

Moved by Weismantel, second Pharis to approve contract amendments for salaried staff members, Loren Bahr, Brandon Clocksene, Beth Gustafson, Mike Nehls and Kristi Peterson. Motion carried.

Moved by Rix, second Harder to adjourn at 10:40 pm. Motion carried.

M. J. Weber, Business Manager  
Steven R. Smith, President  
The addition of signatures to this page verifies these minutes as official.

Published once at the total approximate cost of \$124.28. 19519.

### Brown County Dec. 8, 2020 Meeting Minutes

DECEMBER 8, 2020 – GENERAL MEETING

Meeting called to order by Commission Vice Chair Fjeldheim at 8:45 A.M. in the Commission Chambers, Courthouse Annex, Brown County, SD. Present were Commissioners Feickert, Wiese and Sutton. Commissioner Kippley was absent. Commissioner Sutton led the Pledge of Allegiance.

**APPROVAL OF AGENDA:**  
Moved by Sutton, seconded by Wiese to approve the agenda. All member present voting aye. Motion carried.

**MINUTES:**  
Moved by Sutton, seconded by Wiese to approve the general meeting minutes of December 1, 2020. All members present voting aye. Motion carried.

**CLAIMS/PAYROLL:**  
Moved by Feickert seconded by Wiese to approve the following claims and payroll:

**PAYROLL:** Commission \$4,285.10; Elections (Voucher) \$1,590.06; Auditor \$8,876.41; Treasurer \$13,495.36; SA \$23,042.82; SVAWA \$1,730.76; Maintenance \$7,892.22; Assessor \$14,402.13; Register of Deeds \$8,983.40; VSO \$4,499.59; GIS \$2,387.50; IT \$7,687.63; HR \$2,173.85; Sheriff \$44,086.48; Jail \$62,892.73; Court Security \$6,222.05; JDC \$26,128.98; Welfare \$2,077.70; Museum \$19,395.24; Parks/Fairgrounds \$3,379.35; Fair Board \$4,067.60; 4-H \$654.30; Weed \$825.02; Planning & Zoning \$4,469.87; Highway \$39,623.84; Dispatch \$27,106.06; Emergency \$4,119.58; Teen Court \$495.22; JDAI \$1,769.23; 24/7 Sobriety \$1,348.16; Landfill \$15,629.55; Matching Benefits: FICA \$21,670.09, Medicare \$5,067.98, Discovery\_HSA \$300.

**CLAIMS:** Professional Fees: Avera St. Lukes \$1,351.51; Kristi Brandt \$42.00; Charlevoix County Sheriff \$30.00; Clark Engineering Corp \$10,381.10; Dakota Counseling Group \$1,950.00; Fox & Youngberg \$746.90; Michelle Galkowski \$20.40; Christopher A. Haar \$44.80; Kerri Cook-Huber \$166.90; James D. Leach Law Office \$13,986.46; MP Aberdeen LLC \$567.00; Sanford Health \$324.65; SD Department of Health \$1,550.00; Siegel, Barnett & Schutz \$6,643.20. Publishing: Aberdeen American News \$697.25; Aurora Media Group \$27.20; Blade Empire Publishing \$43.50; Groton Independent \$576.16; Hub City Radio \$300.00; Marshalltown Newspaper LLC \$17.88. Repairs & Maintenance: Aberdeen Plumbing & Heating \$1,379.53; B&B Contracting Inc \$3,580.28; Mark Kolb \$150.00; Butler Machinery Co \$477.20; Crawford Trucks & Equipment \$146.94; Dakota Fluid Power Inc \$4,073.00; Dakota Pump Inc \$1,020.40; Diesel Machinery \$16,164.00; Great Western Tire Inc \$11.00; Lawson Products Inc \$27.00; Leidholt Electric LLC \$1,396.06; Marco Inc \$330.66; Pro Windmill Inc \$345.00; Pierson Ford

\$1,994.25; R.D. Offutt Company \$4,801.85; Transource Truck & Equipment \$12,539.89; Trinity Services Group \$100.00. Supplies: Agtegra Cooperative \$6,807.70; Ameripride Services Inc \$387.95; Artz Equipment \$30.28; Bakken Building Maintenance \$500.00; Bob Barker Co \$165.84; C&R Supply Inc \$40.32; Cash-Wa Distributing \$14.52; Cole Papers \$1,319.99; Crawford Trucks & Equipment \$3,390.82; Crescent Electric Supply Co \$331.79; Dakota Fluid Power Inc \$332.83; Dakota Supply Group \$136.94; Diesel Machinery \$2,682.01; Double Duty Portable Storage \$1,219.68; Earthgrains \$449.70; Fastenal Co \$303.12; Fedex \$13.54; Fox & Youngberg \$21.28; Great Western Tire Inc \$2,703.86; Interstate Battery System \$385.85; Lawson Products Inc \$317.06; Mac's Inc \$505.08; Marco Inc \$69.49; Menards \$269.96; Midstates Printing \$197.98; Pantorium Cleaners Inc \$84.00; Pharm-chem \$1,211.00; Plumbing & Heating Wholesale \$239.45; CNH Industrial America LLC \$208.50; R.D. Offutt Company \$3,677.87; Runnings \$304.80; S & S Lumber \$27.00; Sander's Sew-N-Vac Inc \$1,659.84; Karen Swank \$176.00; Transource Truck & Equipment \$6,555.23; US Foods \$7,014.89; Van Diest Supply Co \$2,043.00; Zastrow's Sales & Service \$38.76. Travel & Conference: Mark Milbrandt \$374.00. Utilities: City of Aberdeen \$992.99; AT&T Mobility \$179.09; Quest Corporation \$2,401.51; Midcontinent Communications \$258.33; Northwestern Energy & Communications \$15,047.18; Town of Frederick \$61.00. Other: SD Attorney General's Office \$132.00; SD Dept of Environment & Natural Resources \$4,716.31. All members present voting aye. Motion carried.

**HR REPORT:**  
Moved by Fjeldheim, seconded by Wiese to approve the following HR Report: Acknowledge transfer of Bryan Gordon, Brown County Juvenile Detention Center Correctional Officer to Jail Correctional Officer full-time, effective December 13, 2020. All members present voting aye. Motion carried.

**NECOG AGREEMENT:**  
Moved by Wiese, seconded by Sutton to approve and authorize vice chair sign the joint cooperative agreement with NECOG for 2021 in the amount of \$25,569.38. All members present voting aye. Motion carried.

**SET HEARING – BUDGET SUPPLEMENTS:**  
Moved by Feickert, seconded by Wiese to set hearing date for 2020 budget supplements as follows: A public hearing will be held by the Brown County Commission on the 29th day of December 2020 beginning at 8:50 a.m. in the Brown County Commission Chambers, Courthouse Annex, Aberdeen, SD to consider supplementing the 2020 fiscal year budget, as follows: General Fund – Elections 101.5.120.426 @ \$19,957.00 from restricted donations 101.4.365, Commission 101.5.111.426.07 @ \$30,000; Information Technology 101.5.171.426 @ \$50,000, Corner 101.5.213.426 @ \$20,000, County Nurse 101.421.429 @ \$1,000; Developmentally Disabled @101.5.422.03 @ \$5,000. Highway – 201.5.311.426 @ \$200,000, - JDAI 238.5.159.426 @ \$5,000 from undesignated surplus cash 101.5.101.99– POD 234.5.222.426 - from designate POD 234.5.101.99. All members present voting aye. Motion carried.

**AUTOMATIC BUDGET SUPPLEMENTS:**  
Moved by Feickert, seconded by Wiese to approve an automatic budget supplement for federal grant award to the election budget in the amount of \$19,114.70. All members present voting aye.

Motion carried.

AUDITOR'S REPORT OF ACCOUNTS:  
Moved by Sutton, seconded by Wiese to approve the following Auditor's report of account for October 2019: Total Cash and Checks on Hand 7700 Total Checking Account Balances: 23959709.16 Total Savings Account Balances: 2425447.42 Total Certificates of Deposit: 4923127.01 Grand Total Cash and Balances: 31315983.59 General Fund Cash and Investment Balances by Funds: General Fund 8287195.68 Road & Bridge Fund 1456349.34 Road & Bridge Fund - restricted 423243.27 911 Service 474526.92 Emergency & Disaster 129188.6 Domestic Abuse 925.84 Teen Court 26734.38 Grant 32.11 JDAI -17917.63 Richmond Youth 21916.96 24/7 Sobriety 21776.06 ROD M&P 102097.71 Tif Debt Service 452821.82 Landfill + cash change 3613758.34 Landfill - restricted 1400479.44 Trust and Agency Funds 14922854.75 GRAND TOTAL GENERAL FUND CASH AND INVESTMENTS 31315983.59. All members present voting aye. Motion carried.

**SET HEARING DATE- HIGHWAY ROOFING BID:**  
Moved by Feickert, seconded by Wiese to set hearing date for highway roofing bid. Public review of bids is scheduled for December 29th, 2020 at 8:46a.m. Brown County Courthouse Annex, County Commission Chambers, Aberdeen, SD. All member present voting aye. Motion carried.

**BRIDGE INSPECTION REPORT:**  
Mike Gutenkauf with Clark Engineering now IMEG met to give an inspection report on the condition of Bridges in Brown County. No action taken.

**SET HEARING DATE- LANDFILL CELL 4 CONSTRUCTION:**  
Moved by Wiese, seconded by Sutton to set hearing date for highway roofing bid. Public review of bids is scheduled for December 22nd, 2020 at 8:47a.m. Brown County Courthouse Annex, County Commission Chambers, Aberdeen, SD. All member present voting aye. Motion carried.

**RFP-INDIGENT DEFENSE SERVICES:**  
Moved by Sutton, seconded by Feickert to approve the proposal received for Indigent Defense Services for 2021and 2022, with execution of contracts to follow at a later date. All members present voting aye. Motion carried.

**BLOOD DRAW PAY INCREASE:**  
Moved by Sutton, seconded by Wiese to approve increase in fee per blood draw from \$50 to \$70. All members present voting aye. Motion carried.

**EXECUTIVE SESSION:**  
Moved by Sutton, seconded by Wiese to go into executive session to discuss personnel and contracts per SDCL 1-25-2(1.4). All members present voting aye. Motion carried. The Chair declared executive session closed with no action taken.

**ADJOURNMENT:**  
Moved by Sutton, seconded by Wiese to adjourn the Brown County Commission at 10:47a.m. All members present voting aye. Motion carried.

Cathy McNickle, Brown County Auditor  
Published once at the total approximate cost of \$89.92. 19520.

**Brown County  
Roofing  
Contractors**

**NOTICE TO ROOFING CONTRACTORS**  
Notice is hereby given that sealed bids will be received in the Chambers of the Brown County Board of Commissioners at the Brown County Courthouse Annex, 25 Market Street Suite 1, Aberdeen,

South Dakota; until the hour of 8:46 A.M on December 29, 2020, at said time and place all bids will be publicly opened, read and considered by the Brown County Board of Commissioners for: Project – Remove existing rock ballasted rubber roof system and install a new rubber roofing system on the Brown County Highway Department 3133 Northeast 8th Ave, Aberdeen, South Dakota.

Envelopes containing bids shall be addressed to the Brown County Auditor, 25 Market Street Suite 1, Aberdeen, South Dakota 57401 and be marked on the envelope.

"Brown County Highway Department Roof" to be opened on December 29, 2020.

**PROPOSAL GUARANTY:** No proposal will be considered unless accompanied by a certified check, a cashier's check or bank draft, for 5% of the amount of the bid, such check to be issued by either a state or a national bank and payable to Brown County, or in lieu thereof a bid bond for 10% of the amount of the bid, such bond to be issued by a surety company authorized to do business in South Dakota and payable to Brown County.

**PERFORMANCE BOND:** Brown County will give notice to the successful bidder that the proposal has been accepted, and said bidder shall within ten (10) days thereafter enter into a contract with Brown County and furnish a performance bond in an amount equal to the contract price.

The Brown County Board of Commissioners reserves the right to accept or reject any or all bids that they deem to be in the best interest of Brown County, and to waive any informalities or irregularities therein. Brown County is exempt from all Federal Excise and State Sales Tax.

Copies of the specifications are on file at the Brown County Maintenance, 25 Market Street Suite 1, Aberdeen, South Dakota 57401 and obtained at no charge. Phone: 605-626-7124.

**ATTEST:**  
Cathy McNickle  
Brown County Auditor  
(1216.1223)

Published twice at the total approximate cost of \$46.42. 19521

### Brown County Supplemental Budget Hearing

**NOTICE OF HEARING  
2020 BROWN COUNTY BUDGET SUPPLEMENT**

A public hearing will be held by the Brown County Commission on the 29th day of December 2020 beginning at 8:50 a.m. in the Brown County Commission Chambers, Courthouse Annex, Aberdeen, SD to consider supplementing the 2020 fiscal year budget, as follows: General Fund – Elections 101.5.120.426 @ \$19,957.00 from restricted donations 101.4.365, Commission 101.5.111.426.07 @ \$30,000; Information Technology 101.5.171.426 @ \$50,000, Corner 101.5.213.426 @ \$20,000, County Nurse 101.421.429 @ \$1,000; Developmentally Disabled @101.5.422.03 @ \$5,000. Highway – 201.5.311.426 @ \$200,000, - JDAI 238.5.159.426 @ \$5,000 from undesignated surplus cash 101.5.101.99– POD 234.5.222.426 - from designate POD 234.5.101.99. The public is invited to attend the hearing and to present comments and testimony regarding the supplements.

**ATTEST:**  
Cathy McNickle, Brown County Auditor  
(1216.1223)

Published twice at the total approximate cost of \$24.10. 19522



# HS Christmas Concert



The Groton Area High School Christmas Concert was put on Thursday evening in the GHS Gym. The high school choir sang, "Run, Rudolph, Run," "White Winter Hymnal" and "Holy Night, Silent Night." (Photo lifted from GDILIVE.COM)



The high school band performed, "A Charlie Brown Christmas," "Hallelujah" (Pentatonix version) and "Adventum." After that, the holiday sing-a-long was held with Deck the Halls, Jingle Bells, O Christmas Tree and We Wish You A Merry Christmas. (Photo lifted from GDILIVE.COM)

## JVT Public Notice of Rates

JVT Public Notice  
JVT is a telecommunications provider who provides basic and enhanced services within its service territory. JVT is an Eligible Telecommunications Carrier and as such, receives support from the Federal Universal Service Fund. Local service charges are as follows:

### Monthly Rates Andover/Bristol/Claremont/Columbia/Conde/Doland/Ferney/Groton/Hecla/Houghton/Turton

- Single Party Residence Service: \$20.00
- State Mandated Emergency 911 Services Each Single Line Residence: \$ 1.25
- Federal Mandated Subscriber Line Charge Each Single Line Residence: \$ 8.60
- Federal Mandated Communications Impaired Each Single Line Residence: \$ .15
- Frederick/Mellette  
Single Party Residence Service: \$20.00
- State Mandated Emergency 911 Services Each Single Line Residence: \$ 1.25
- Federal Mandated Subscriber Line Charge Each Single Line Residence: \$ 7.15
- Federal Mandated Communications Impaired Each Single Line Residence: \$ .15

Customers of basic service have access to the public switched network, minutes of use for local service provided at no additional charge and access to emergency 911 services. Toll limitation services are also available for qualifying low-income customers. Lifeline service is available for qualifying low-income customers. The federal Lifeline benefit may be applied to either qualifying voice services (\$5.25/month) or qualifying broadband services (\$9.25/month).

### Broadband Internet access service is available at the following monthly rates:

- Up to 25 MBPS - \$45
  - Up to 50 MBPS - \$55
  - Up to 100 MBPS - \$65
  - Up to 250 MBPS - \$75
  - Up to 500 MBPS - \$85
- Speeds not available in all areas.

### Cell Phone Data Plans are available at the following monthly rates:

- Unlimited 1 phone - \$50
  - Unlimited 2 phones - \$75
  - Unlimited 3-10 phones - \$100
  - 10GB Cap - \$40
  - 3GB Cap - \$30
  - \$10 per GB overage cost
  - Unlimited Talk & Text per phone - \$25
- Published once at the total approximate cost of \$26.45. 19523.

## JVT Public Notice of Lifeline

JAMES VALLEY TELECOMMUNICATIONS PUBLIC NOTICE  
Lifeline service is a government program designed to make monthly residential telecommunication services more affordable to eligible low-income customers. Customers who are eligible for the Lifeline program are also eligible for toll blocking at no additional charge.

The Federal Lifeline discount can be applied to qualifying voice or broadband services. In order to be eligible for the Federal Lifeline discount, a customer's annual household income must be at or below 135% of the Federal Poverty Guidelines or a customer must participate in one of the following programs: Supplemental Nutrition Assistance Program (SNAP); Medicaid; Supplemental Security Income (SSI); Federal Public Housing Assistance; Veterans Pension & Survivors Pension; or qualifying Tribal Programs.

Lifeline is a non-transferable service and eligible subscribers may receive assistance from only one wireline or wireless telecommunication provider per household. Only eligible customers may enroll in the program. Customers are required to submit a Lifeline application form and will be required to certify continued eligibility annually. Customers who willfully make false statements in order to obtain Lifeline benefits can be punished by fine or imprisonment or can be barred from the program.

Basic services are offered to all customers in James Valley Telecommunication's service territories at the rates, terms, and conditions specified in James Valley Telecommunication's tariff. If you have any questions regarding Lifeline service or would like to apply for Lifeline service, please call us at 605-397-2323, toll free at 1-800-556-6525, or visit our business office at 234 E 1st Ave, Groton, SD.

Published once at the total approximate cost of \$19.92. 15524.

## Westport Town Dec. 7, 2020 Meeting Minutes

Town of Westport General Meeting  
December 7th, 2020  
The Town of Westport met on December 7th, 2020 with Mitch Wilson, Shane Storm, & Doreen Hertel present.

The following expenses were presented:  
City General  
NWPS (\$302.47), Groton Independent (\$15.57), SDML Workman's Com (\$541.00), Dakota Supply Group (\$172.56), Menards (\$606.90), Cardmember services- Magnetic Locator (\$769.95), JGE (\$834.83) JGE Rental (\$ 398.69), Kevin Bourdon- Rock (\$1,140.00),

B&B contracting (\$ 240.00), Hall Sand & Gravel (\$874.80), Running (\$67.98 & \$22.47), Doreen Hertel (\$ 900.00), Derek Schoenfelder(\$ 670.00), Shane Storm (\$890.00) & Mitch Wilson (\$790.00)

Sewer  
NWPS (\$43.59), NRWA -loan repayment (\$210.13), Doreen Hertel (\$300.00)

Water  
WEB (\$1,511.78), Water Maintenance District (\$408.16), State of SD (\$15.00), Doreen Hertel (\$300.00)

Mitch Wilson made motion to pay all bills; second by Shane Storm.

The following deposits were presented:  
City General  
Brown County Collections (\$3,211.08), THE SHED (\$900.00), State of SD (\$3,701.78), Sacred Heart Church (\$790.00), & Interest (\$3.46).

Sewer Resident Payments - (\$2,600.00)  
Water Resident Payments - (\$4,279.68)

### NEW BUSINESS:

Discussion was held on sewer rates for the surcharge of the loan that we will be receiving. That surcharge will need to be at a \$32.50 per user to pay the loan back. The city will still need to need to charge a rate to maintain the sewer system over and above that rate of \$32.50. It was decided to set the new sewer rate at \$39.00 a raise of \$4.00 from the current monthly rate. A resolution will be read next meeting to approve that rate.

Doreen Hertel, Finance Officer  
Published once at the total approximate cost of \$21.74. 19525.

## Frederick School Dec. 2, 2020 Joint Meeting

OFFICIAL BOARD PROCEEDINGS  
FREDERICK AREA SCHOOL DISTRICT #6-2  
DECEMBER 2, 2020

The joint school board meeting was called to order on December 2, 2020, at 7:00 p.m. by President Rich Schlosser. Frederick Area school board members present were Dan Nickelson, Jon Ellwein, Alex Hart and Rich Achen (via Zoom). Leola school board members present were ReEtta Sieh, Richard Westphal, Trevor Zantow, Kristi Spitzer and Arnie Wollman (via Zoom). Others present were Business Managers Janel Wagner and Kayla Casey (via Zoom) and Leola Superintendent Bev Myer.

The meeting began with all present reciting the Pledge of Allegiance.  
Action 20-066 Motion by Ellwein, second by Hart to approve the agenda as presented. All aye, carried.  
Members of the public were allowed three minutes to address

the board on any topic of their choice. With no public members wishing to speak, the board moved on with their remaining agenda items.

Action 20-067 Motion by Nickelson, second by Ellwein to enter Executive Session per SDCL 1-25-2 (1) for employee matters at 7:00 p.m. All aye, carried.

President Schlosser declared Board out of Executive Session at 8:59 p.m.

Action 20-068 Motion by Hart, second by Ellwein to offer Jeff Kosters the 2021 Head Football coach position for the Leola/Frederick coop. All aye, carried.

Action 20-069 Motion by Nickelson, second by Ellwein to hold the Winter concert in the afternoon of December 10, 2020, and have attendees watch virtually. Roll call vote: Hart-no; Ellweinyes; Nickelson-yes; Achen-yes; Schlosser-no. Motion carried.

Action 20-070 Motion by Hart, second by Ellwein to offer a Special Education teaching position to Taylor Achterberg. All aye, carried.

Action 20-071 Motion by Nickelson, second by Ellwein to adjourn at 9:26 p.m. All aye, carried.

Rich Schlosser, President  
Janel Wagner, Business Manager

Published once at the total approximate cost of \$21.45. 19526.

## Brown County Landfill Cell Construction

SECTION 00 11 13 - ADVERTISEMENT FOR BIDS  
BROWN COUNTY LANDFILL  
BROWN COUNTY, SOUTH DAKOTA  
CELL #4 CONSTRUCTION, A-7653

The Brown County Board of Commissioners will receive sealed bids for their Landfill Cell #4 Construction project until Tuesday, December 22, 2020 until 8:47 AM in the Commissioner's Chambers at the Brown County Court House located at 25 Market Street in Aberdeen, South Dakota. Sealed bids may be sent to the Brown County Auditor at 25 Market Street, Aberdeen, SD 57401 prior to the letting, or hand delivered at the address stated above immediately preceding the bid opening. Received sealed bids will be publicly opened and read aloud at the Brown County Commissioner's Chamber at the above-mentioned time.

Bids are invited upon the items and approximate quantities of work as follows:

Base Bid - Cell 4 Construction  
Approximately: 1 L.S. Mobilization, 538,000 CuYd Unclassified Excavation, 10,000 CuYd Unsuitable Material Undercut, 24,000 CuYd 24" Compacted Clay Liner, 1400 CuYd 12" Side Slope Cover Material, 1,000 CuYd Topsoil from Stockpiles, 16,000 Tons 12" Granular Drainage Material, 800 Tons Coarse Ag-

gregate, 3,500 SqYd Geotextile Drainage Fabric, 900Ft 8" HDPE Perforated Leachate Piping, 170 Ft 8" HDPE Leachate Piping, 3 each 8" HDPE 45° Bend, 900 Ft Post Construction Leachate Pipe Telescoping, 1 L.S. 36" X 20' CMP Cleanout Extension w/ Piping, 1 Each Side Slope/Leachate Cleanout, 1 L.S. Salvage & Re-Install Storm Sewer Lift station and Controls, 3,000 Tons Gravel Surfacing, 11 Acres of Fertilize, Seed, and Mulch, 6 Each Rip Rap Check Dam, 262 SqYd Rip Rap Drainage Trench, 6,400 SqYd Erosion Control Blanket, 4,800 Ft Erosion Control Wattle, 130 Ft High Flow Silt Fence, 7 Each Inlet Protection, 350 Ft Install Salvaged 10' Chain Link Fence, 1 L.S. Landfill Dewatering, and Miscellaneous items.

Alternate Bid 1 -Access Road  
2,700 Tons Asphalt Surfacing Type 1 Class G (PG-64-28), 9540 Sq.Yd. Scarify, Reshape, Compact Road Bed (6"), 1,000 Tons Base Course, 430 Sq.Yd. Remove and Dispose of Existing Asphalt and Miscellaneous items.  
Alternate Bid 2 - Pallet Area  
4,600 CuYd Place Borrow Sand Material from Cell Unclassified, 8,900 SqYd 6" Scarify and Re-compact Pallet Area, 3,000 Tons Gravel Surfacing, 866 Ft 6" Underdrain Piping w/ Sock, and Miscellaneous items.

The approximate quantities mentioned above are subject to increase or decrease. It will be agreed by bidders that all quantities of work will be performed in accordance with the provisions of the plans and specifications and at the unit price bid. Bidders agree to furnish all labor, material, and equipment necessary to complete all the work as shown in the plans and specifications.

The complete set of Contract Documents, including 11" x 17" paper drawings and specifications, is on file with the Brown County Auditor and/or at the office of Helms and Associates, 221 Brown County Highway 19, Aberdeen, South Dakota 57401. Copies of the Contract Documents may be obtained from the office of Helms and Associates, PO Box 111, Aberdeen, SD 57402. Plans and specifications

may be obtained upon payment to Helms and Associates in the amount of \$100.00 for shipping and handling. Please state quantity documents requested. Plans and specifications may also be downloaded from the Helms and Associates web site upon a one-time payment of \$20.00. The web site is located at <http://www.helmsengineering.com/biddocs.html>. All payments are non refundable. Additionally, upon request, in accordance with South Dakota Codified Law 5-18B-1, one copy of Plans and Specifications shall be furnished, without charge, to each Contractor resident in South Dakota who intends, in good faith, to bid upon the project.

In addition to all of the above listed Federal requirements for work on this project, compliance with the contract Work Hours and Safety Standards Act, Executive Order 11375, Copeland Act, the Clean Air Act, and Water Pollution Control Act, and subsequent amendments to all of the above will be required of contractors and/or subcontractors performing work on this project.

Each bid must be accompanied by a certified check or bank draft payable to the order of Brown County, South Dakota in an amount equal to five percent (5%) of the total bid. A bid bond in an amount equal to ten percent (10%) of the total bid will be accepted in lieu of a certified check or bank draft. Surety for bid bond must be authorized to do business in the State of South Dakota.

Bids may be held by Brown County Commissioners, for a period of not more than thirty (30) days from the date of opening of bids for the purpose of reviewing the bids, investigating the qualifications of the bidders and completing financial arrangements prior to awarding the Work. The Owner reserves the right to reject any or all bids and to waive any informality in the bidding.

By:  
Cathy McNickle, Auditor  
(1209.1216)  
Published twice at the total approximate cost of \$101.67. 19499

*A gift subscription to the Groton Independent makes a great gift for Christmas!*

# COLLEGES AT A CROSSROADS: Pandemic creates new challenges and highlights historic concerns

By: Bart Pfankuch

Colleges and universities across South Dakota were facing long-range financial, logistical and access challenges even before the COVID-19 pandemic struck.

Enrollment was falling, state financial support for public universities was dropping, and rising tuition led to high loan burdens for many students and reduced access to obtaining a degree for some low-income and minority families.

Beyond creating immediate health concerns on campuses, the pandemic has exacerbated those troubling trends, and has put higher education in America and South Dakota at a crossroads — presaging a time when fundamental decisions must be made about how higher education is delivered and consumed, how it is paid for and who is able to attend.

On the health front, university and college leaders across South Dakota are declaring the fall 2020 semester a victory, as in-person classes were held and relatively few students, faculty or staff became infected with the coronavirus.

But the pandemic caused upheaval in other ways, revealing three major trends that underscore the ongoing challenges faced by higher education institutions both public and private, large and small, across the state and nation: a significant shift to online rather than in-person, on-campus learning; reduced access to higher education by low-income and minority students; and revenue reductions that could reduce the quality of higher education and the value of a college degree.

Many of the same headwinds facing higher education in South Dakota are buffeting colleges across the country. A recent analysis by The Hechinger Report of nearly 3,000 colleges found that even before the pandemic, more than 500 institutions faced dire economic forecasts, that state support had declined at 700 public universities over the past eight years and that nearly half of the schools had seen enrollment drops since 2009. Some colleges have closed; others have eliminated sporting, academic or extracurricular programming.

Overall enrollment in the South Dakota public university system in fall 2020 dropped by 2.84%, and private colleges reported similar declines, including a 7% drop at Augustana University in Sioux Falls. Administrators were generally pleased that the 2020 declines weren't greater, although resulting revenue losses, still to be calculated, are certain to be in the tens of millions of dollars.

As a much-needed holiday break approaches for students, faculty and staff, followed by a spring semester still tinged with danger from the deadly COVID-19 pandemic, South Dakota News Watch interviewed more than a dozen key stakeholders in South Dakota higher education to assess how the pandemic affected teaching and learning, how it may alter higher education in the short-term and whether this unprecedented time may lead to fundamental, long-term changes in higher education.

"We're just preparing to see what this new world looks like to us now, and some pieces of that equation we're not ready to fill in just yet," said Brian Maher, executive director of the South Dakota Board of Regents. "This is the beginning of the puzzle of what the pandemic will do to us, not only from an instructional-delivery standpoint, but [also] a students-on-campus standpoint, and ultimately from a revenue standpoint."



**South Dakota Board of Regents Executive Director Brian Maher discusses the likelihood of revenue challenges related to a drop in student enrollment and a shift to online learning at state universities.** Photo by Nick Lowrey, South Dakota News Watch

## The costly shift to online learning

Colleges and universities saw a great migration of students to online education during the pandemic, which could be seen as a coronavirus safety maneuver and a temporary shift, but which state data shows is a continuation of a larger trend.

Board of Regents data show a 10% drop in face-to-face learning in the regental system from fall 2019 to fall 2020. But from 2016 to 2020, face-to-face enrollment fell by about 18.3%, or 5,500 students, from 29,710 to 24,278.

Regental data also show a sharp rise in students who enrolled in an online course in the past year and over the past five years. The system saw 27,504 students enrolled in a distance-learning course in fall 2020, a 59% jump over fall 2019 and a 66% rise since fall 2016.

The Regents created an online option in 2000 when they initiated the "Electronic University Consortium" that sought to offer statewide distance learning aimed at providing new opportunities for "place-bound, adult and otherwise non-traditional learners."

But now, online learning has grown into a viable option for all students, including traditional incoming freshmen who choose to live at home and for on-campus students who take online courses in addition to in-person classes.

Just as a decline in overall enrollment reduces college revenues, the shift to online learning carries its own revenue challenges. Students who do not live on campus cost universities about 40% of the revenue obtained from students who live, eat and park on campus. At the University of South Dakota, which saw its overall enrollment drop by 5.8% from 2016 to 2020, the university saw face-to-face enrollment drop by 15.7% over that time frame.

At USD, a full-time on-campus student pays about \$18,560 in tuition, fees, room and

board, while an online student does not pay the roughly \$8,000 for housing and a meal plan. In South Dakota, per-credit tuition for online courses is about \$85 higher than for in-person courses, but the higher rate — even at 30 credits a year and \$2,500 more in annual tuition — does not nearly make up for the lost housing and meal revenues, resulting in a potential \$25 million revenue reduction systemwide per year.

Black Hills State University in Spearfish, a liberal arts and teacher's college, saw overall enrollment fall by 15.0% in the past five years (4,244 to 3,608), but had the greatest shift away from face-to-face learning in the system, losing 27.7% of its face-to-face enrollment over that time (3,468 to 2,507).

Providing options for an increasing number of students who want to learn online while meeting the need for consistent revenues is likely to be more difficult over time, said BHSU President Laurie Nichols.

"The competition coming to us online is pretty fierce right now and there are many, many students that are opting to do more of their education online," Nichols said. It's a balancing act and it's probably one of the greatest challenges we have in higher education leadership today ... figuring out how do we balance those two somewhat competing forces."

Maher said the loss of "auxiliary" revenues from housing, meals and event attendance could create a significant drain on the university system if the trend toward online learning continues as expected after the pandemic subsides. Businesses in cities where universities are located will also see lost business if the online shift continues or picks up pace.

"What does it mean to us if enrollment continues to go down or if our students aren't learning on campus?" Maher said. "What does it mean to us in terms of lost revenue from a housing perspective, from a meal-plan perspective, from an attendance at athletic events perspective? There are a lot of pieces that go into that auxiliary budget that are still unknown, and we don't know the impact of those losses yet."

Instructors and students say that teaching and learning by computer over the internet added another stressor during the pandemic, especially for professors who were not familiar with teaching remotely and students unfamiliar with online learning.

Almost all colleges and universities in South Dakota took steps to provide safe in-person learning by requiring or urging use of masks, creating additional space for social distancing and reducing class sizes through hybrid courses.

Research into the effectiveness of online learning remains unsettled, though some students and instructors question whether something critical is lost by not holding classes in person.

"It's no secret students don't learn as well online," Augustana student Jenifer Fjelstad, a 20-year-old junior journalism and French major, wrote to News Watch in an email. "Online learning feels like going through the motions to get an assignment done or get a certain grade, but in-person learning lets me lean into my natural interest about the subject and really learn."

Northern State University professor Mark Geary, president of the statewide faculty



**Mark Geary**

union, had experience with teaching online before the pandemic and said he had success doing so during the fall.

But Geary acknowledged that online teaching is “a complicated process to do it well and keep everyone engaged.”

Geary said some students would get distracted by roommates playing loud

music or playing video games that ate up bandwidth and reduced connectivity. Geary and others also lament that online learning reduces the personal connection between teacher and student that can lead to educational breakthroughs.

“It’s really challenging to build your student relationships in your online classes,” he said.

Geary said he was able to use online teaching platforms that encouraged creativity, such as an assignment that prompted students to create a theoretical habitat on the planet Mars.

He noted that given the uncertainty of the pandemic, the rapid shift to online teaching and the fact that some students were in quarantine at times, he shifted his grading standards down somewhat.

Some administrators and students said online learning eliminates critical elements of the traditional on-campus experience, such as learning to live and work with others, including peers from diverse backgrounds, and networking opportunities and relationship-building that can aid in career advancement later.

Shifting too far toward online learning could also lessen the value of some degrees, particularly those that require students to have hands-on, experiential learning, said Barry Dunn, president of South Dakota State University.

Dunn said he believes the use of technology will continue to expand in college courses but will never supersede the value of in-person, on-campus teaching in many subject areas.

“You want your nurse to have gone through a nursing program with hands-on clinical experiences, right? That’s just fundamental,” Dunn said. “I’d personally rather have somebody designing a bridge who had worked in face-to-face courses.”

Despite steady decreases in face-to-face learning, several administrators said the pandemic may actually heighten interest among students who want to live and learn on campus and could reverse the online trend somewhat. They also think that the experience with teaching remotely to stay safe during the pandemic will lead to more use of technology that enhances rather than replaces in-person learning.



**Barry Dunn**

Ben Iverson, enrollment director at Augustana University, said the school surveyed students over the summer and found they “resoundingly” preferred the on-campus learning experience.

“So that will continue to be the core of what we do here at Augustana,” Iverson said, “even if at times we integrate or blend technology into the teaching experience.”

South Dakota Mines engineering student Andrew Ward, 20, said he found hybrid courses to be the most effective, but added that he benefited from online lessons that allowed him to go back and review tapes of lectures on concepts he didn’t fully understand the first time around.

### Revenue concerns rise due to pandemic

The COVID-19 pandemic is certain to create more financial stress on a public university system in South Dakota that was already facing significant revenue challenges.

Systemwide total student enrollment, a key driver of college revenues, fell by 8.1% from fall 2016 to fall 2020, from 36,531 to 33,566. Administrators point out that some recent dips were in enrollment of international students, who they hope will return once the pandemic and travel restrictions subside.

While revenue losses from the fall semester haven’t been tallied, the six schools in the state university system already lost \$16 million in the spring in reimbursements made to students for tuition, fees, housing, meals and parking after shifting to remote learning. Some losses were offset from pandemic aid provided by the federal CARES Act that supplied \$14 billion to U.S. colleges and universities.

Tuition, fees and room and board revenues made up about 38% of the total system budget of \$832 million in 2020. Meanwhile, state financial support for education has been on the decline for several decades. While the state provided about two-thirds of the cost of public higher education in the 1960s, state support has fallen to about 34% today, and

**“You want your nurse to have gone through a nursing program with hands-on clinical experiences, right? I’d personally rather have somebody designing a bridge who had worked in face-to-face courses.”**

-- Barry Dunn, president of South Dakota State University



**Ryan Maher**

money into the system, and the question is, Are we getting the most efficiencies we can out of the system?” Sen. Maher said. “Hopefully we can correct the ship and the trajectory we’re on.”

Sen. Maher said early meetings have uncovered potential savings such as consolidation of food-service provision through a single contact rather

than individual contracts with different providers at each university, or centralizing some educational programs he said are redundant. He is also concerned that universities continue to build new structures and repair old ones at a time that more teaching is moving online.

For example, Sen. Maher shared a task force report indicating that SDSU had spent about \$295 million on major capital projects since 2010 — including the \$65 million Avera Science Center and \$95 million on an athletic complex and a new football stadium — and has another \$42 million in projects projected for completion soon.

Private colleges in South Dakota, which tend to have significantly higher tuition than public universities, are also making major capital investments. Mount Marty College in Yankton, where undergraduate attendance costs \$37,500 a year, recently built a \$15 million field house and a \$4.5 million dormitory; Augustana University, where undergraduate attendance costs about \$45,000, has announced plans for a \$110 million residence hall addition and upgrade project.

The state charges public university students a fee that pays for some of the new construction occurring on campuses, and Sen. Maher worries that continued spending on buildings will lead to tuition-and-fees increases that may price some families out of sending their children to public universities.

“How are they going to make those bond payments? That’s a big question; where is that money going to come from?” Sen. Maher said. “The cost of a four-year degree in South Dakota is expensive, and we want to hold off on any more tuition increases.”

SDSU President Dunn acknowledged that it will be a challenge moving forward to maintain campus infrastructure at a time when enrollment is falling or shifting online.

“Tremendous infrastructure was built up over a century in a model that predated the web, and so just the maintenance and repair, let alone making new modern facilities, is at odds with an online world,” Dunn said.

Two former higher education administrators in South Dakota — former Regents president Harvey Jewett and former USD president Jim Abbott — argue that greater state investment is critical to maintaining the high-quality education the state system has provided despite ongoing state cuts.

In a 55-page public letter sent to Gov. Kristi Noem, the Legislature and the Regents, the men called 2010 to 2020 a “lost decade” in regard to education funding. They said that \$250 million in funding to the university system has resulted from state cuts and spending reductions by the Regents, and that those reductions have put the quality of the system and the value of degrees it awards at a breaking point.

In an interview with News Watch, Jewett said the system has done an excellent job at attracting in-state and out-of-state students and hiring qualified instructors as the cuts continued. But he said that without greater state investment, and perhaps a small tuition

**Continues on next page**

## On-campus enrollment declining at S.D. universities

This chart shows the number and the percentage changes over time of students who enrolled in face-to-face courses at South Dakota public universities. The reduction in students learning on campus is indicative of a continued shift from in-person to online learning within the Board of Regents system.

	2016	2019	2020	1-year change	5-year change
<b>System</b>	<b>29,710</b>	<b>26,974</b>	<b>24,278</b>	<b>-10.0%</b>	<b>-18.3%</b>
SDSU	11,368	10,200	9,448	-7.4%	-16.9%
USD	7,567	7,233	6,379	-11.8%	-15.7%
BHSU	3,468	2,913	2,507	-13.9%	-27.7%
NSU	2,419	2,231	2,088	-6.4%	-13.7%
SDSMT	2,758	2,457	2,197	-10.6%	-20.3%
DSU	2,130	1,940	1,659	-14.5%	-22.1%

the financial burden on students has risen correspondingly.

The pandemic hit South Dakota public universities at a time when they were already under scrutiny by a legislative panel that will spend more than a year examining system operations.

The Senate Bill 55 Task Force is holding meetings around the state to seek efficiencies in spending and operations, said state Sen. Ryan Maher, R-Isabel, who led efforts to create the task force.

“We’re putting a substantial amount of

**Continued from previous page**

increase, the university system will begin to falter.

"There will be collapse — you can't go on this way forever," Jewett said. "The quality of the education will fall and the reputation of your schools will fall."

Given the formation of the task force and past actions of the Legislature, it seems unlikely state funding for higher education will rise dramatically any time soon.

University of South Dakota President Sheila Gestring said she welcomes the review by the Senate task force because it will point out how efficiently state universities are already operating. She said USD spends only two-thirds of the money spent by like-sized universities across the country to produce a graduate.

Gestring said she and other administrators are always on the hunt for new ways to save money while still providing a high-quality education at an affordable cost for students, but that a tipping point in quality might be reached eventually.

"My concern is that even with all those efficiencies that we've enacted, we're running out of ways to address the bottom line through efficiencies," Gestring said. "I just don't know that we can do much more there, and the costs don't go down."

Public university tuition in South Dakota is the second-highest among public systems seven Great Plains states, trailing only Minnesota. At \$9,299 for resident undergraduate tuition and fees, South Dakota is higher than Wyoming, Montana, Nebraska, North Dakota and Iowa. The average student-debt load for 2019 university graduates in South Dakota was \$25,427.

Maher said the increasing cost of obtaining a college degree in South Dakota may push more students to attend out-of-state schools or move into the technical college system. The state has seen a decline in the number of South Dakota high school graduates who have enrolled in the university system, from 3,207 (36%) of graduates staying in the state in 2010-11 to 2,910 (32%) staying in 2017-18.

Competition for new enrollees remains high in South Dakota among both public and private schools. The private Dakota Wesleyan University in Mitchell, for example, announced this fall that it would begin offering a \$2,000 payment and scholarship offers to students who transfer to the college from elsewhere after Jan. 1, 2021.

The shift to two-year tech schools is already occurring. The pandemic has highlighted the continuing move of students into the South Dakota technical education system, which provides a cheaper, faster path to a post-secondary degree or trade certification and possibly a good job. As public and private four-year colleges saw enrollment declines in 2020, South Dakota's four technical schools saw a slight rise in enrollment in fall 2020, coming on the heels of a 13.8% jump in enrollment over the past five years.

The annual cost to enroll in a South Dakota technical college is about \$7,000 and students do not have to pay to live, eat or park on campus.

Employment and income challenges that arose amid the pandemic will only increase the value of a technical degree, said Nick Wendell, executive director of the South Dakota Board of Technical Education.

"With spiking unemployment, the deep pandemic impacts and the ripple effect on the economy, getting a credential or a technical degree is a really good way to maintain career

security and work in any community large or small in South Dakota," Wendell said. "There's probably a pretty high-paying, in-demand position available for you in South Dakota with a technical degree, and I think that message has resonated with a lot of folks."

Wendell is working to incorporate the technical colleges further into the overall range of options for higher education in South Dakota, seeking ways to make technical credits more transferable to the university system. Some high school graduates and non-traditional students may seek a technical degree, earn money for a few years and then return to get a four-year degree, he said.

"A technical degree doesn't have to be your end point," Wendell said.

He said technical schools can provide an affordable, flexible path to a better life for the nearly 25% of South Dakota high school graduates who do not enroll in any post-secondary program within 18 months of graduating.

"Think about the impact that has on our workforce, on those young people's ability to have any type of upward mobility or make an investment in a home," he said. "It's limiting for those individuals, but it's limiting for us as a state as well."

As the pandemic goes on, and the cost of higher education continues to rise, some parents and their children are making tough choices about how, where and when to go to college. Maher, the Regents CEO, said he is concerned that some students may decide to take a gap semester in the spring, especially if they did not enjoy or find enough value in the shift to online or hybrid course.



**Nick Wendell**

Sydney, 19, at one point hoped to attend USD in Vermillion, but chose to save more than \$9,000 a year by living at home and attending the university center satellite campus in Sioux Falls instead. After seeing the savings, and then watching the shift to online and hybrid courses during the pandemic, Sydney has now decided to complete her accounting degree in Sioux Falls and not transfer to the campus in Vermillion after her sophomore year as planned.

Julie Becker, who runs the St. Francis House shelter in Sioux Falls, said she let Sydney make her own decisions, and supported her frugal approach after seeing her older son run up about \$25,000 in student loans by moving to Minnesota to study at St. Cloud State University. Yet she and her husband, both college graduates, wonder if their daughter's desire to avoid taking out loans is costing her an important part of the college experience.

"College isn't just the classes, it's the people you meet and the friendships and the study groups — all that goes with it," Becker said. "She is missing out on the social aspects of going to college."

Becker said she believes the university system in South Dakota will have to adapt, find new ways to deliver teaching, and change its financial formula, in order to keep higher education as an affordable option for future high school graduates.

"The pandemic brought to light all those things that were already playing out," she said. "I think the institutions are going to struggle because you're already seeing them losing students on campus, which is then impacting their ability to pay for infrastructure, dorms, or personnel and programs."

**ABOUT BART PFANKUCH**

Bart Pfankuch, Rapid City, S.D., is the content director for South Dakota News Watch. A Wisconsin native, he is a former editor of the Rapid City Journal and also worked at newspapers in Florida. Bart has spent more than 30 years as a reporter, editor and writing coach.



**Sheila Gestring**



**Sydney Becker and her mother, Julie, have worked together to explore options for Sydney's path to a college degree and feel good about about the financially sensible decisions Sydney has made so far.** Photo: Submitted

Parent Julie Becker of Sioux Falls, and her daughter, Sydney, had already shifted their priorities before the pandemic and did so again as it dragged on.

**Take your [virtual] coffee break with us!**

Join us every **Tuesday-Friday, 10-11a.m. CST** for our **FREE Webinar Series**  
*Informal discussion to follow.*

**CROP HOUR**

JANUARY 2021	FEBRUARY 2021
Jan. 5-8: Stored Grain	Feb. 2-5: Field Peas, Milo & Polycropping
Jan. 12-15: Corn	Feb. 9-12: Oats
Jan. 19-22: Soybean	Feb. 16-19: Soil Health/Cover Crops
Jan. 26-29: Wheat	Feb. 23-26: Forages

MARCH 2021
Mar. 2-5: Sunflowers
Mar. 9-12: Understanding SDSU Agronomy Research
Mar. 16-19: Water, Weather and Climate
Mar. 23-26: Regulatory Info/Pesticide Education

CCA Credits Available

Go to: [extension.sdstate.edu/agriculture/crops](http://extension.sdstate.edu/agriculture/crops) for free registration and details.

**Toys And Joys of Christmas**

There are so many kinds of toys and surprises that might be found under the tree. What are your favorite kinds of toys? One that I really like is my plastic, wind-up, walking chunk of cheddar cheese!

**Holiday Toys and Surprises**

1. g a m e s a n d p u z z l e s
2. d o l l s a n d s t u f f e d a n i m a l s
3. c o n s t r u c t i o n t o y s
4. m o d e l s
5. s p o r t s e q u i p m e n t
6. b i k e s a n d r i d i n g t o y s
7. c a r s a n d t r u c k s
8. t r a i n s e t s
9. a r t s a n d c r a f t s
10. m u s i c a l i n s t r u m e n t s



## Toys And Joys of Christmas

Do you write to Santa Claus or visit him to tell him what you would like for Christmas? What is the special toy that you have your eye on?

Choo! Choooo! Trains run around the bottom of Christmas trees. Reindeer have red, blinking noses. Christmas toys can bring lots of joy, especially when shared with others.

Read the clues to fill in the crossword puzzle:

1. ice \_\_\_\_\_
2. \_\_\_\_\_ to Santa
3. \_\_\_\_\_ bell
4. gingerbread \_\_\_\_\_
5. tin \_\_\_\_\_
6. \_\_\_\_\_ over a fireplace
7. long wooden \_\_\_\_\_
8. Sugar Plum \_\_\_\_\_
9. Model \_\_\_\_\_ under the tree
10. \_\_\_\_\_ ballet
11. \_\_\_\_\_ on the shelf
12. holiday \_\_\_\_\_
13. \_\_\_\_\_ pull Santa's sleigh
14. \_\_\_\_\_ for naughty kids
15. striped candy \_\_\_\_\_

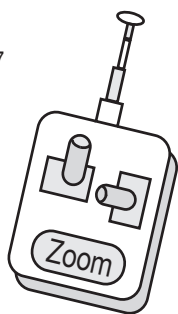
16. rocking hobby \_\_\_\_\_
17. steaming hot \_\_\_\_\_
18. \_\_\_\_\_ hat:  
red with white fur
19. crunchy \_\_\_\_\_ for reindeer
20. singing \_\_\_\_\_
21. \_\_\_\_\_ gliding downhill
22. Santa's \_\_\_\_\_

23. spinning \_\_\_\_\_
24. North \_\_\_\_\_
25. holiday drink, \_\_\_\_\_
26. Sugary \_\_\_\_\_ with fun shapes
27. \_\_\_\_\_, Santa's favorite drink
28. \_\_\_\_\_ cubes for the reindeer
29. \_\_\_\_\_ on the top of the tree
30. wind-up \_\_\_\_\_

Fill in the blanks to spell the names of Santa's reindeer:

## A Present from Santa Claus

What did Santa leave under the tree? The box is open, now follow the numbered stars to see!



## Holiday Toys and Surprises

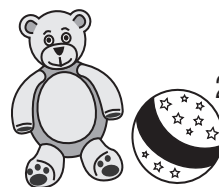
There are so many kinds of toys and surprises that might be found under the tree. Use the letter bank below and cross off the letters as you fill in the blanks:

1. ga \_ es and pu \_ zles
2. \_ olls and s \_ uffed ani \_ als
3. con \_ truction to \_ s
4. mo \_ els
5. spo \_ ts equi \_ ment
6. bik \_ s and ridi \_ g toys
7. ca \_ s and truc \_ s
8. trai \_ se \_ s
9. art \_ and cra \_ ts
10. musi \_ al instrume \_ ts

Letter bank: y m z r f e t c s t p s n n d d k r

## Where Are The Toys?

Where might we find the toys? Follow the dots to see where the toys are packed, stuffed or left:



## The Life of Robert Groebelinghoff



A private Mass of Christian Burial for Robert "Bob" Groebelinghoff, 87, of Groton, was held Monday, December 14th at St. Elizabeth Ann Seton Catholic Church, Groton. Father Tom Hartman officiated. Burial followed in Union Cemetery under the

direction of Paetznick-Garness Funeral Chapel, Groton. Services were live streamed on GDILIVE.COM.

Robert passed away December 9, 2020 at Avera St. Luke's Hospital, Aberdeen. Robert Elroy was born on March 24, 1933 in St. Paul, Missouri to Joseph and Frances (Haislip) Groebelinghoff. He attended school in Wentzville, Missouri graduating in 1951. On April 4, 1964, he was united in marriage with Karen Houchard in St. Charles, Missouri. The couple made their home in Missouri where

Robert was employed with Purina. In the mid 70s, Bob was granted a transfer with work and chose South Dakota as their new home. He later was employed as a feed specialist with South Dakota Wheat Growers. Bob and Karen enjoyed life on their hobby farm, west of Groton.

In early years, Bob played baseball and was honored in the Missouri State Baseball Hall of Fame. This love of the game would continue with his son and grandchildren. Bob also enjoyed fishing and the outdoors; including all of God's creatures and the game of golf. He came from a musically talented family and loved to sing and play the harmonica. Bob was a prankster and loved telling stories and jokes. Bob served on the Brown County Fair Board for a number of years. He was a member of St. Elizabeth Ann Seton Catholic Church and had held various positions there over the years. He was a member of the Knights of Columbus.

Celebrating his life is his wife, Karen of Groton, his son, Matt (Joni) Groebelinghoff and his beloved grandchildren, Katie, Joe, Ryan and Nicholas.

Preceding him in death were his parents, 6 infant children, one sister and four brothers.

## The Life of Douglas Doeden



Services for Douglas Doeden, of Groton will be 10 a.m., Saturday, Dec. 19th at Groton Area School Arena. Rev. Charlie Bunk and Pastor Kari Foss will officiate. Burial will follow in Union Cemetery, Groton under the direction of Paetznick-Garness Funeral Chapel, Groton. Services will be live streamed on GDILIVE.COM and will also be broadcast on GDIRADIO at 89.3FM within one mile of Groton.

Private visitation will be held on Friday at Emmanuel Lutheran Church with a prayer service at 6:00 p.m. One hour of public visitation will be held prior to services on Saturday.

On Wednesday, Dec. 9, 2020 Doug Doeden, loving husband and father of four children, 14 grandchildren and 2 great-grandchildren passed away at the age of 76.

Doug was born to Harris Oliver and Jennie Doeden in Sibley, Iowa on April 2, 1944. He moved to a farm located in the Lake Wilson, Minnesota area at the age of 10 with his parents and siblings. Doug attended country school and finished his education at Lake Wilson High School. After graduation he farmed with his dad and worked at the Lake Wilson lumberyard. On November 6, 1965 he married Arlis Nepp. Doug and Arlis along with their family moved to Slayton, Minnesota in 1970 where Doug began employment with UBC Lumberyard. In 1972 Doug and his family moved to Groton, SD where he was manager of the lumberyard in Groton. He continued to work at the S & S Lumberyard for Larry Schelle until he retired due to health reasons. Doug and Arlis raised two sons, Troy and Toby, and two daughters, Jodi and Jill.

Doug had a passion for many sports activities. He was awarded best supporting fan while attending high school. His love of sports continued throughout his life within his family and community. Doug coached youth basketball and enjoyed every minute. He loved his family and friends with a passion and never tired of spending time with his grandchildren. Doug loved playing and winning Euchre. He also enjoyed house renovation and remodeled several homes in Groton. In 1996 Doug and Arlis, and their son Toby and his wife Liz opened Paints n' More and after purchasing the old bank building added Olde Bank Christmas Shoppe to the mix. Doug truly enjoyed his years in this business.

Doug's friends and family enjoyed his quick wit and unusual way of communicating. Groton transit became a very important pillar in his life. Doug loved his years of service to the community transit. Driving the bus for the children was a highlight for him as well as being part of the "transit coffee crew".

Doug was preceded in death by his parents, Harris Oliver and Jennie and brother Kevin Doeden, mother and father-in-law Una and Mahlon Nepp. He is survived by his wife Arlis of 55 years, his children, Jodi (Ward) Votapka, Troy (Chris) Doeden, Jill (Bob) Sheehan, Toby (Liz) Doeden, 14 grandchildren, 2 great-granddaughters, and extended family Pam and Brad Hanson, Thomas Cranford, Nelly and Lukas Kustura. He is also survived by brothers Harris (Linda) Doeden, Keith Doeden, sisters Pat (Bob) Idzorik and Peg (Harvey) Erstad and sister-in-law Sandy Doeden.

Pallbearers will be Chase McKittrick, Connor McKittrick, Camden Hurd, Jackson Doeden, Oliver Doeden, Cade Sheehan, Thomas Cranford, Jonathan Doeden and Calder Sheehan.

Honorary Pallbearers will be Jim Ackman, Dave Blackmun, Jerry Bjerke, Gary Heitmann, Jay Johnson, Marc Johnson, Dave McGannon, Gordon Nelson, Tyke Nyberg, Randy Stanley and John Wheating.

Honorary Pallbearers also include his granddaughters, Sophie Doeden, Josie Doeden, Grace Doeden, Carma Sheehan Townsend, Jennie Doeden and Audrey Doeden.

## Service Notice: Martha Farmen

Services for Martha Farmen, 80, of Groton, will be Monday, December 21st at Emmanuel Lutheran Church, Groton. Pastor Kari Foss will officiate. Burial will follow in Union Cemetery under the direction of Paetznick-Garness Funeral Chapel, Groton. Services will be live streamed on GDILIVE.COM and will also be broadcast on GDIRADIO at 89.3FM within one mile of Groton.

Visitation will be held at the church on Sunday from 5-7 p.m. with a prayer service at 7:00 p.m.

Martha passed away Wednesday, December 16, 2020 at Sun Dial Manor in Bristol.

*A gift subscription to the Groton Independent makes a great gift for Christmas!*

Call

605/397-NEWS (6397)

Paul at 397-7460

or

Tina at 397-7285

**Ken's SUPER FAIR FOODS**  
FOOD FAIR & SHELL EXPRESS  
www.kenssuperfair.com  
• ABERDEEN • GROTON • CLARK • IPSWICH • EUREKA • BRITTON •

**Ken's Groceries To Go!**  
Order Your Groceries and Have Them Delivered!  
Tiger Meat | Bakery Fresh Tom & Jerry Batter

**NOW OPEN in Ken's Deli in Aberdeen**  
*family fresh* SUSHI  
MADE FRESH DAILY  
Special Orders Available Upon Request

**Bone-In Turkey Breast \$1.49** Per Lb.  
**Maple Leaf Grade A Ducks \$2.99** Per Lb.  
**Sheboygan Little Smokies 2/\$5** 14 Oz. Pkg.  
**ORDER NOW! Your Christmas Seasoned Prime Rib \$13.99** Per Lb.  
At All Ken's Locations

**Nestle Baking Morsels 2/\$5** 10-12 Oz. Pkgs.  
**Washington Gold Delicious, Gala, Fuji, Braeburn, Red Delicious or Granny Smith Apples \$1.29** Per Lb.  
**Oscar Mayer Deli Fresh Shaved Meats \$3.49** 7.9 Oz. Pkg.  
**Just Own Shrimp and Crab Salad \$4.49** Per Lb.  
**Best Choice Russet Potatoes \$1.49** 5 Lb. Bag

**Campbell's Cream of Chicken or Mushroom Soup 99¢** 10.5 Oz. Can  
**Best Choice Corn, Green Beans or Sweet Peas 3/\$1** 14.5-15.25 Oz. Cans  
**Prego Pasta Sauce 3/\$5** 14.5-24 Oz. Jars  
**Gold Medal Flour 2/\$5** 5 Lb. Bags

**Best Choice Granulated Sugar 2/\$4** 4 Lb. Bags  
**AHA 3/10** 9 Pk. 12 Oz. Cans  
**A&W, 7Up, Sunkist or Squirr 5/\$5** 2 Liter Bottles  
**Old Orchard 100% Blended Juice \$1.99** 64 Oz. Jug  
**Progresso Soup 3/\$5** 18-19 Oz. Cans

**Mic Ultra \$20.99** 24 Pk. Btl. & Cans  
**Heineken, Heineken Lt \$14.99** 12 Pk. 12 Oz. Btl.  
**Bubba Multiflex Fillet Knife \$79.99** w/4 Interchangeable Blades  
**Vexilar FL-8 Genz Pack \$289.99**

**Lord Calvert \$15.99** 1.75 L  
**Meiomi Pinot Noir \$17.49** 750 ML  
**Sutter Home \$4.49** 750 ML All Varietals  
**Forty Creek \$29.99** 1.75 L

Coffee + Gourmet Drinks  
Gourmet Foods  
Monday-Friday 7 AM - 6 PM  
Saturday 7 AM - 4 PM  
Sunday 9 AM - 1 PM  
Call 605-225-6671  
**\$2.00 OFF**  
Coffee of the Week  
Almond Joy - Hot or Iced  
**50¢ OFF**

**APP DEAL OF THE WEEK**  
**Niagara Water 99¢**  
24 Pack .5 Liter Bottles  
W/\$10 PURCHASE & KEN'S APP  
Limit 1 per customer, requires \$10 additional purchase and use of Ken's App

**FRESH SEAFOOD & FRESH FISH AVAILABLE DAILY**

**Meat**  
**Farmland Boneless Ham \$8.99** 4 Lbs. Pkg.  
**John Morrell Whole SBO Ham \$1.99** Per Lb.

**Produce**  
**Imported Red or Green Seedless Grapes \$2.29** Per Lb.  
**Del Monte Golden Pineapple 2/\$3**  
**New Crop California Delight Clementines \$4.99** 5 Lb. Box

**Dairy**  
**Kraft Shredded or Chunk Cheese 2/\$4** 7-8 Oz. Pkgs.  
**Kraft Philadelphia Cream Cheese 3/\$5** 8 Oz. Pkgs.  
**Original or 1/3 Less Fat \$1.99** Qt. Con.

**Frozen**  
**Cool Whip 99¢** 8 Oz. Tub  
**Pizza Corner 13" Pizza \$5.99**

**Bakery**  
**Finger Rolls White or Wheat \$1.99** 12 Ck.  
**Jessie Lord Pecan Pies \$6.99** 21 Oz. Pkg.  
**Famous Fried Chicken 8 Pc. Bucket \$8.99**

**Health & Beauty**  
**Old Spice Body Wash \$4.89** 16 Oz. Bottle  
**Energizer Max AA or AAA Batteries \$9.99** 16 Ck. Pkg.  
**Household**  
**Mrs. Gerry's Deviled Egg Potato Salad \$3.49** Per Lb.  
**Hefty Foam Plates or Bowls 2/\$3** 18-54 Ck. Pkgs.

Find us on Facebook | Follow us on Twitter  
PRICES GOOD AT ALL KEN'S LOCATIONS  
DECEMBER 16<sup>TH</sup> THRU DECEMBER 19<sup>TH</sup>  
W 16 | T 17 | F 18 | S 19