

Subscribe for only \$3.75 per month

Send check for \$3.75 to

The Groton Independent, 110 N Washington St., Groton SD 57445.

Then after the first month, payments will be made with e-check for \$3.75 per month.

You can cancel any time!

Or call 397-6397 to pay with a credit card.

Independent

\$2



Vol. 132 No. 39 ♦ Groton, Brown County, South Dakota ♦ Tuesday, May 26, 2015 ♦ Established in 1889

Memorial Day 2015

Groton City Council Agenda

June 1, 2015 - 7pm
Groton Community Center

- 1) Minutes
- 2) Financial Report
- 3) Bills
- 4) 7pm FBLA – Brooke Lindback, Advisor – Oct 3 Fund Raiser
- 5) 7:15pm Kim Weber – BB Playground Donation
- 6) Recreation Reports
- 7) Department Reports
- 8) DENR Award
- 9) Capitol Asset Improvement List 2015
- 10) STIP informal Meeting – NCOG-416 Production St- June 24- 7pm or Formal DOT meeting July 13- 7pm - Ramada
- 11) Malt Beverage Licenses Renewal
- 12) Request to close E 2nd Ave 1/2 block from Main St west to alley and use park tables for Groton Transit and Chamber Fund Raiser June 11
- 13) 2015 Special Assessment Bond Resolution & Interest Rate
- 14) Exe Session – Legal



The Groton American Legion Post #39 hosted its Memorial Day Program with the main event taking place at the Legion Post home due to the weather. The Color Guard was at the cemetery doing their part of the ceremony. The smaller photos from left to right are:

Bob Wegner had the message and he also presented Bob Wehde with a certificate for his 60 years of service to the American Legion.

Tami Zimney and Jake McKiver took turns reading the roll call.

After the ceremony, the Legion Auxiliary had a dinner in Legion reception room.

(Thanks to Deb Olson for the photos)

AND any other business that may come before the Council

Ash tree dropping leaves this spring, but no need to be alarmed

Editor's Note: We have noticed that several Ash Trees are dropping leaves. In research, we came across this article from the same thing happening in Wisconsin.

MADISON - People throughout central and southern part of Wisconsin have been reporting that ash trees have been dropping their leaves since shortly after the trees leafed out, but state forestry health officials say the leaf drop is not likely to cause any long term health problems for trees and affected trees should recover.

"Ash leaf drop was first noticed in many areas of Wisconsin following the Memorial Day weekend," says Kyoko Scanlon, a forest pathologist with the state Department of Natural Resources. "Due to loss of leaves, affected trees have a thinner crown compared to nearby broadleaf trees of different species, as if they never quite leafed out."

Scanlon says several events this spring have caused ash to drop some of their leaves and appear thin and sparse. The cool spring temperatures caused ash to leaf out a bit later than usual. Several mid-May freezes as well as patchy frost around the state damaged newly expanding leaves or caused tender leaves to die. In addition, anthracnose, a fungal leaf disease, was able to infect some leaves this spring and the trees are purging those damaged leaves.

"When you look at ash leaves that prematurely fell to the ground, they have black blotches on green leaves and many of them are curled up or distorted," says Scanlon.

The leaf disease, anthracnose, is commonly seen when the spring weather is cool and wet. Leaf damage tends to be more severe on the lower crown of



Continues on Page 2

"From minor scratches to a complete rebuild... we can do it all!"

NOW OPEN

Harris
Auto Body

225 Brown County Hwy 19 South
Aberdeen: 605/725-4900

BLOCKER
CONSTRUCTION

NEW CONSTRUCTION
REMODELING
HOOP BARNs

(605) 216-2677 (605) 226-4062

Oven Fresh Sandwiches | Hot Desserts | Snack Melts

11 E Hwy 12, Groton ~ 397-8627

BAKES! | DO | Grill + Chill

Trees

Continued from front

a tree if anthracnose is the culprit whereas frost damage will be more severe in the upper portions of the tree and the outer edges.

Early leaf drop of ash was also severe and widespread in 2004 when a cool wet spring allowed anthracnose to thrive, according to Linda Williams, a DNR Forest Health Specialist. During that year some ash trees were almost completely leafless in early June, and many homeowners were concerned that their trees would die.

"Those trees started to produce additional leaves, and the affected trees looked much better the rest of the season. The trees didn't see any long-term ill effect," she says. "We expect that the current ash leaf drop problem won't cause any long term health problems and affected trees should recover and have fuller crowns by producing a second set of leaves."

Once leaves mature, temperatures increase, and spring shower season ends, the problem usually subsides. No control is necessary for yard trees although it is a good idea to maintain the overall health of the trees by watering during dry periods, properly mulching, and minimizing injuries to the tree.



6th Grade Students of the Month 2014-2015:

Back - Samantha Pappas, Tanae Lipp, Trey Gengerke, Sage Mortenson
Front - Isaac Smith, Erin Unzen, Tessa Erdmann, Alexis Hanten



7th Grade Students of the Month 2014-2015:

Back - KaSandra Pappas, Ashley Flihs, Kaycie Hawkins, Kayla Jensen
Front - Nicole Marzahn, Kya Jandel, Rylee Ronsenau, Payton Colestock



8th Grade Students of the Month 2014-2015:

Back - Ashley Garduno, Tylan Glover, Paige Snyder, AnneMarie Smith
Front - Kaitlyn Anderson, Cassandra Townsend, Emily Thompson, Alexis Simon

Odd El Nino Partially Responsible for Extra Moisture

Since the beginning of May, precipitation conditions across South Dakota have changed generally for the better, becoming quite wet in certain areas of state, said Dennis Todey, SDSU Extension Climate Specialist and South Dakota Climatologist.

"During the month of May, some places in the west have seen three to four times the precipitation they had seen since January," Todey said.

The latest climate outlooks, released May 21, 2015 from the National Oceanic and Atmospheric Administration's (NOAA) Climate Prediction Center keep with that same trend of nearer average, to wetter than average, conditions over much of the state.

Todey explained that due to a dry winter and early spring, South Dakota entered the month of May with growing drought concerns; and rapidly increasing U.S. Drought Monitor coverage and intensity. "The precipitation total across South Dakota were the lowest on record statewide for January through April," he said "leading to quickly building dryness concerns."

30-Day Outlook

The newly released NOAA 30- and 90-day climate outlooks continue to indicate wetter than average conditions are more likely for most of the state through the summer.

"The June to August outlook, in particular, has above average precipitation chances likely over most of South Dakota and the Great Plains," Todey said. "The June outlook has wetter chances just in southern South Dakota."

Temperature outlooks are listed as equal chances for below or above average for both the next 30- and 90-days. Assuming the wetter conditions do occur, Todey said near-normal to cooler temperatures are more likely to exist for the summer. "Rarely do warm and wet conditions occur together during the warm season in the Plains," Todey said.

El Nino

El Nino in the Pacific is impacting much of the outlook. "El Nino is developing, which seems very likely to strengthen and persist through the summer," Todey said.

El Nino's are more typically a winter phenomenon, Todey explained, strengthening in the fall and weakening in the spring. "This El Nino is acting quite the opposite of usual strengthening through the spring," he said. "The impact of the likely wetter conditions will be to continue to reduce the precipitation deficits still existing in some places of eastern South Dakota."

The newest U.S. Drought Outlook concurs with this idea, showing drought reduction as likely in areas still listed on the U.S. Drought Monitor map. "The increased precipitation totals should generally be good for agricultural production for the year after the dry fall to spring period," Todey said. "Soils still have some deficits in the east to overcome. Thus, the additional precipitation is still needed."

He added that excessive wetness has not been too much of a problem yet, but will have to be monitored in some areas of the state. "The change to wetter conditions will also likely increase disease potential for various crops as the growing season progresses," he said.

Kristi Peterson Bookkeeping
 Simple Solutions for YOU
 605/216-4474 ~ peterson4@nvc.net

Mowing - Trimming
 Edging - Fertilizing
 Spring/Fall Cleanups
 Travis Kurth, Licensed and Insured
 Free Estimates - 605/397-7469
Cutting Edge Lawn Care
 Quality Lawn Care At Affordable Prices

Midwest Masonry & Concrete Pumping
 Greg Heilman, owner
 405 E 1st Ave., Groton
 Greg: 253/929-9137
 Mike: 605/492-7041
 midwestmasonry1@yahoo.com



Freshmen Students of the Month
 Back: Hannah Lewandowski, Jenifer Fjelstad, Madison Sippel, Alex Stange
 Front: Alexis Gustafson, Lisa Taylor, Madilyn Wright
 Missing Emilie Crosby

Sophomores Students of the Month
 Back: Kelby Hawkins, Landon Marzahn, Nathan Fjelstad, Paityn Bonn
 Front: Alexis Harder, Erin Smith, Keri Pappas, Macy Knecht



Juniors Students of the Month
 Back: Hailey Hanson, Lily Cutler, Carly Wheeting, Maggie Simon
 Front: Emily Raap, Marlee Jones, Jasmine Schaller, Megan Unzen

Seniors Students of the Month
 Back: Kasey Waage, Luke Smith, Rachel Blackmun
 Front: Maryn Howard, Katie Groebinghoff, Taylor Gustafson
 Missing: Jacob Milbrandt, Gabe Dohman



Harry Implement
 "Family Owned & Operated Since 1935!"
 CERTIFIED DEALER
 AFS
 (605) 395-6421
 Ferney

Put our experienced team to work for you!
GROTON
 Ford
 GROTONFORD.COM 605-397-2311

FROST
 CONSTRUCTION INC.
 GENERAL CONTRACTOR
 605.290.1535
 custom homes | remodels | additions

DI Globals Updates Published in the Groton Daily Independent

by Joni Groeblichhoff

Published May 25, 2015

The two Groton Area DI teams wrapped up their Global Finals experience Saturday, May 23 with another day full of fun. The "Out of the Boxers" team participated in their instant challenge in the morning, followed by their TADA performance. Their fans were the "5 Confused People" team and managers, Jim and Lisa Cutler, and Shannon Wright. Both teams visited the University of Tennessee book store and did more pin trading on their final day.

The Closing Ceremony was held in Thompson Boling Arena. The "Out of the Boxers" had a three-way tie for 29th place and "5 Confused People" came in 44th place.

After the ceremony both teams attended the Teen Party.

The week long adventures started to come to an end as an early morning leave from Knoxville Sunday morning began the travels back to South Dakota. As the group passed through St. Louis, Missouri they drove past the St. Louis Gateway Arch and the St. Louis Cardinals Busch Stadium, much to the delight of a certain team manager!

After spending the night in Columbia, Missouri, the group will travel the remaining way home to Groton on Memorial Day. The two teams traveling to Global Finals, along with the entire Groton Area Destination Imagination group would like to thank the Groton and surrounding communities for their support of our program and fundraising activities. We are very appreciative to live in a community who supports the various activities of the Groton Area students.

If you would like to learn more about the Destination Imagination program, please visit Destination Imagination or to see more photos of our two teams at the Duct Tape Costume Ball and information about Global Finals 2015, visit Global Finals 2015 Blog - The world's Largest Celebration of Creativity.

Published May 23, 2015

It was another day of adventure in Knoxville as the two Groton Area DI teams took in the sights of Destination Imagination Global Finals. The "Out of the Boxers" team left the hotel early in the morning in order to get to campus to watch their Buddy team from Turkey perform. They also did a little pin trading, checked out the souvenir sales and attended the Movies in the Park at the World's Fair Park lawn.

Today was a big day for the "5 Confused People" team as they presented the solution to their Improv Games challenge for the final time. The team of three seniors; Breanna Marzahn, Luke Smith and Katie Groeblichhoff also participated in the 2015 Global Finals High School & College Graduation Ceremony held in the Alumni Memorial Building. They each received a certificate and an Alumni Ambassador pin. Following the ceremony the three graduates along with their team managers, Julie Milbrandt and Joni Groeblichhoff and driver, Shannon Wright celebrated at the local Waffle House!

The two teams shared time together when the "Boxers" supported "5 Confused People" by attending both their afternoon performance and the graduation ceremony. Cozy Dorton, SD DI Affiliate Director and Dean Fenenga, incoming SD Affiliate Director also attended the performance to wish our seniors well. Lots of applause and cheering was heard from the South Dakota group in their honor today and it was much appreciated.

Published May 22, 2015

Thursday in Knoxville proved to be another eventful

4 ♦ 397news.com ♦ Tues., May 26, 2015



Breanna Marzahn, Luke Smith, Katie Groeblichhoff.



Graduating seniors of the DI program are Katie Groeblichhoff, Luke Smith and Breanna Marzahn. (Photo by Joni Groeblichhoff)

day. The "Out of the Boxers" team completed their team challenge, Making Waves. Some changes were made to their performance due to a case of laryngitis, but in true DI spirit, they pulled off another great performance. Later that afternoon a trip to the Knoxville Zoo involved more team bonding for the "Boxers". The "5 Confused People" team participated in their Instant Challenge with an entertaining TADA performance to follow. Their afternoon was spent awaiting buses, pin trading, and finishing their costumes for the Duct Tape Costume Ball. Both teams

attended and enjoyed the Duct Tape Costume Ball and their costumes were appreciated by many. "The Boxers" team went as the King & Queen, Knights and Princesses and "5 Confused People" went as the 5 Confused People Marching Band. The entertainment for the evening was a concert by The Exchange a cappella group. "5 Confused People" detoured to the Passport Party before returning to the ho-



(Photo by Julie Milbrandt)



(Photo by Joni Groeblichhoff)

tel. While en route to the party, they spotted Dr. Chuck Cadle, CEO of Destination Imagination who graciously agreed to take a picture

with the team. Both teams had a great day with many memories made.

Published May 21, 2015

Two Groton Area Destination Imagination teams left early Monday, May 18 for Destination Imagination Global Finals in Knoxville, TN. After an overnight stay in Belleville, Illinois we arrived in Knoxville on Tuesday. The Out of the Boxers team met with their Buddy Team from Turkey, exchanged gifts and had some time to visit. Team members include Nathan Fjelstad, Trey Wright, Lily Cutler, Jenifer Fjelstad, Keri Pappas, and Erin Smith. Their team managers are Clint and Tara Fjelstad. They spent the afternoon getting props to the props area and preparing for their

Groton Chiropractic Clinic

Carol McFarland-Kutter, D.C.
1205 N 1st St., Groton 397-8204

Dakota Outdoors
Erik Dean
402 N Main St
Aberdeen, SD 57401
605.229.0123
dakoutdoors@mldconetwork.com

CARPENTRY • CONCRETE
SCHULTZ
CONSTRUCTION LLC
• BATH, SD •
Check out our portfolio on Facebook at [Schultz-Construction-LLC](#)
~ New Construction and Remodeling-
renovations, additions, and carpentry
work
~ Concrete- foundations, flatwork,
decorative concrete surfaces.
605-380-1717
www.shawnschultzconstruction.com



Pictured are Luke Smith, Katie Groeblichhoff and Breanna Marzahn. (Photo by Joni Groeblichhoff)



In back, left to right, are Coach Julie Milbrandt, Nathan Fjelstad, Lily Cutler, Trey Wright, Coach Clint Fjelstad, Luke Smith and Erin Smith; in front, left to right, are Coach Tara Fjelstad, Jenifer Fjelstad, Breanna Marzahn, SD DI Affiliate Director Cozy Dorton, Katie Groeblichhoff, Coach Joni Groeblichhoff and Keri Pappas.



team challenge on Thursday at 10:06am. The team 5 Confused People spent the morning preparing their costumes for the Thursday evening Duct Tape Costume Ball. Pin trading seemed to be a popular activity in the afternoon. Team members include newly graduated GHS students Luke Smith, Breanna Marzahn, and Katie Groeblichhoff. Their team managers are Julie Milbrandt and Joni Groeblichhoff. The team will participate in Instant Challenge Thursday at 11:00am. Other local people traveling with the teams include Shannon Wright and Jim and Lisa Cutler. Both teams attended the Welcome Ceremony with several celebrity guests including former astronaut Buzz Aldrin. Mr. Aldrin challenged the participants to form the first colony on Mars. His presence was entertaining. Thursday will be a busy day with team challenges and the Duct Tape Costume Ball as more adventures await the teams!



Parts • Sales • Service
ABERDEEN - 800-843-1865
4935 6th Ave. SE
Aberdeen, SD 57401
REDFIELD - 800-247-4650
17440 - US HWY 281
Redfield, SD 57469
WEBSTER - 800-658-2252
901 W. Highway 12
Webster, SD 57274

RDO
EQUIPMENT CO.

JOHN DEERE

JOHNSON AGENCY
 Real Estate & Insurance
 Jay Johnson, Broker
 www.johnsonagencygroton.com
 102 N Main St. Office: 605/397-2424
 Groton, SD 57445 Home: 605/397-8565

HARR
Motors
 www.harmotors.com
 605-225-3078 ~ 1-800-658-3463

Dakota Brush
 Brooms, Brushes, Mops, Can Liners, Paper Products.
 Brushes & Squeegees
 and Snow Shovels
397-9337
 104 N. Main, Groton

Bevitized: Landline Dance



by Beverly Patterson

I'm a bit old fashioned, I suppose, so when I moved to the big city I wanted a land line telephone. Don and I both have cell phones but the new cable/internet provider we chose to use offered us a plan that included a land line with unlimited long distance. We don't use it all that often but we've sure gotten a lot of interesting messages and to date, none of them have been for us!

For a while, every time I checked the messages, they were for Evelyn. Apparently her lawyer's office was trying to get a hold of her and for some reason they kept calling our number. I don't check the messages everyday and I probably should but the day I finally did, there were at least four messages and each revealed a rather desperate attempt to reach Evelyn. I decided I should probably call the people leaving the messages and let them know they had the wrong number for their client and that is why she wasn't calling them back. I learned several interesting things when calling a "call back" number when you aren't Evelyn. For starters, they have a rather unfriendly tone. It sort of sounds like the tone you would expect to hear if you had just told them you were calling from the auditing department at the IRS. It's rather evasive but they keep listening to you even though they don't want to believe you because believing you would determine they had made a mistake. Eventually they thank you and with the same puzzled sounding voice used for all of their responses, they hang up the phone and sit at their desk for a minute trying to decide what to do next.

I am happy to report the calls for Evelyn finally stopped but today Don said, "Bev, do you realize there are 8 messages on the phone? You should go through them and get at least some of them deleted." I asked him why he didn't just delete them and he said, "None of them are for me." I followed that comment with a rather confident, "Well, I'm betting none of them are for me either."

What happened next would reveal we were both correct. Five of the eight messages stored on our phone were from Mary in California and she was planning a trip to ND and was wondering if her dear old friend Arlene would mind if she stayed for a few days. Like I said before, I don't listen to these messages every day so by the time phone messages number 4 and 5 had arrived, Mary was ready to end the friendship to good old Arlene and tell Arlene to take a flying leap to H-E-double toothpick!

Don heard the messages too and we both decided we better give Mary a call. The fate of her friendship with Arlene was at stake!

I dialed the number and after 3 short rings Mary was on the other end. I said, "Hello Mary. My name is Beverly and I just wanted to let you know that the number you've been calling in an attempt to reach Arlene was in fact, the wrong number." She had that same unfriendly tone and her first question was, "Who is this?" I explained again that she had the wrong number for good old Arlene and then after a brief pause she burst into laughter and said, "Now that's good old ND for ya! I miss ND! I'm coming for a visit soon and I realized I had the wrong number for Arlene and I was able to get in contact with her." She sounded like a wonderful woman and she has our number so if she gets bored while she's here maybe she'll decide to give us a call!

These situations made me think about the Christmas card I sent to the wrong Neil and Julie this past season. They're Don's cousins and I didn't have their address but I knew what city they lived in, or so I thought, so I just Googled it and about a month after sending the card we got it back along with a wonderful letter and picture of the family that received it. They scratched and scratched and scratched their heads but neither of them could place us! I plan to write back to them and let them know that they really don't know us so that they can finally have a bit of closure from their mystery Christmas card. I wonder if they know Evelyn or Arlene. I might mention those names in the letter just for fun!

THINKING ABOUT HEALTH

Prescription Drug Prices Climb into the Stratosphere

By Trudy Lieberman, Rural Health News Service

There's no getting around it. Americans are using more medications and spending more for them. The latest evidence just came from Express Scripts, the pharmacy benefit manager, which acts as a middleman between drug makers and employers. The number of Americans—almost 600,000—with yearly medication costs of more than \$50,000 rose 63 percent from 2013 to 2014. The group of patients with costs over \$100,000 nearly tripled.

By any measure these are huge increases that don't signal much hope that the U.S. can bring down its medical spending, which is now over 17 percent of the country's national income. Express Scripts was frank about the long-term impact on employers and others who actually pay most of those bills. It's an "unsustainable \$52 billion a year."

Who are the patients with these stratospheric drug expenses? Nearly 60 percent are Baby Boomers, and over half of those with expenses greater than \$100,000 are men. Nearly two-thirds are taking 10 or more different medications. The use of antidepressants was more than twice as prevalent among these heavy users as it is in the general population.

What's wrong with that? Don't we want people to have the latest and greatest drugs? After all, we've been conditioned for decades now to believe that modern medicines work miracles. Of course, some have, but others have not. Yet it has become ingrained in the American psyche that patients are entitled to these medicines no matter the cost.

Perhaps that's why we tolerate those intrusive drug company commercials that bombard us at the dinner table with cures for

toenail fungus. But those ads work. They motivate consumers to ask about the drugs being hyped. Most of the time the docs prescribe them.

Cancer medications, hepatitis C drugs like Sovaldi with its \$84,000 annual price tag, and compounded medications, which use ingredients mixed together in the exact strength and dosage required by the patient are the main culprits for the increases, Express Scripts said. A year ago Express Scripts, which works on behalf of insurers, stopped covering some 1,000 active ingredients compounding pharmacies use for ointments, creams, and powders shifting some of the cost to patients.

Not long ago I talked to Peter Bach, a physician and epidemiologist at Memorial Sloan Kettering Cancer Center in New York City, about the high cost of drugs. He echoed the Express Scripts findings. Bach told me makers of cancer drugs can pretty much do what they want in setting prices. The worst that happens is that a journalist writes a story about super-high prices, and the practice continues.

Bach has called for freeing insurers and government programs from requirements to include all expensive drugs in their plans and explaining to the public that some are not effective enough to justify the price, or setting prices equal to those in Western Europe, which are usually determined through government and drug company negotiations. Either way, he says, it's better than we have now.

What about the claim that the high cost of developing these drugs justifies their high price tags? In mid-May a study published in the New England Journal of Medicine found the highly profitable drug and biotech indus-

tries "actually spend only a small fraction of their revenues on truly innovative research."

The study noted that large drug companies did not develop some of the most important recent new drugs but acquired them by purchasing the biotech companies that did. In its first year of sales, Gilead, the company selling Sovaldi, totally recouped the \$11 billion it paid for the rights to market the drug.

The public is becoming more skeptical and starting to question both prices and drug company marketing practices. "A year ago there was little discussion," says John Rother, who heads a group called the National Coalition on Health Care. "Today that is 100 percent reversed," and the group's Campaign for Sustainable Rx Pricing may be catching on. "But I think we're still a long way from agreement about what to do," he said.

Increasingly all consumers will bear the costs of high-priced medicines through higher deductibles and more cost-sharing. Sovaldi and similar drugs added \$4.5 billion to Medicare spending last year, more than 15 times what Medicare paid for older hepatitis C drugs the year before. Only as Medicare beneficiaries and everyone else with prescription drug coverage feels the pinch, will there be any serious chance that people's voices will be loud enough to effect any changes. That will happen, as Express Scripts pointed out, when the prices become unsustainable.

We'd like to hear about your experiences with paying for medications. Write to Trudy at trudy.lieberman@gmail.com.

Editor's note: The Rural Health News Service is funded by a grant from The Commonwealth Fund and is distributed through the Nebraska Press Assn. Foundation, Colorado Press Assn., South Dakota Newspaper Assn., Hoosier (IN) State Press Assn., Illinois Press Assn., Wyoming Press Assn. and California Newspaper Publishers Assn.

Dr. Geoffrey Rath - Optometrist

Eye Exams Glaucoma Tests Rx's Filled
- All Types Contact Lenses -

Doctor here Mondays Only - Office open Thursdays.
701-349-3223 to make appointments & adjustments

Hours at Ellendale, N.D. are:
Monday 9 - 12 & 1 - 5 Thursday 1:00 - 4:00

Sperry Stump Removal Tyler: 605/216-8431
Over 30 Years of Combined Experience!
TJ: 605/380-7915 **TreeLine Tree Service**

McKIVER COLLISION
Lifetime Warranty on all Collision Work!
13556 400th Ave., Groton SD 57445
Allen McKiver, Owner ~ 605/397-4404

Fun in the sun, swimming, picnics... ...hiking and roasted marshmallows.
Newspaper Fun!
www.readingclubfun.com Annimills LLC © 2015 V12-22 Kids: color stuff in!

Are you thinking about going to camp this summer? There are many kinds of camps, all with different activities and schedules. Some kids go to camp for all or part of a day. Children who go to an overnight camp often sleep in a cabin with other campers. Whatever kind of camp you choose, have fun and make new friends!

Going to Camp



Summer Fun

...and so the ghosts of the trees climbed...

We light up the night! Me too!

Hey, Ethan! Want to trade some comic books? Eeek! Do I hear a bear?

I love camping!

Campfire Math...Yum!

Potato Chips

nurse

swim instructor

campers

counselors

director

cook

What Kind of Camp?

There are many kinds of camps to choose from. Which camp are you going to if you are:

1. learning water safety, practicing water skills?
2. programming, drawing graphics?
3. learning the rules of the game, practicing skills?
4. hiking, learning about plants and animals in the woods?
5. cartooning, painting, dancing?
6. learning to care for animals, growing plants?

art

farm

soccer

computer

swim

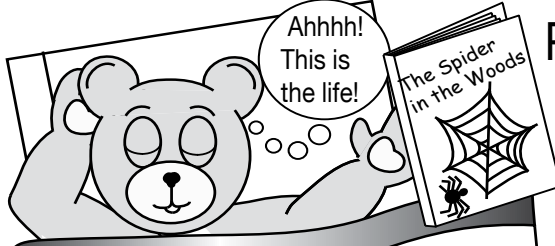
nature

Free Stuff

The people at camp make camp exciting! Who are the:

A. teaches water safety and swimming skills
B. head of camp, runs programs, greets campers
C. decides what you eat, prepares it
D. lead children in activities, help with all question
E. children who come to learn or have fun at camp
F. person who helps when you're not feeling well

Come to print out our new puzzles: **Fishing & Fish Fun, Spring is Everywhere, Let's Invent!** @ www.readingclubfun.com



Packing For Camp?

Kids going to overnight camp will get a list of things to bring with them. **Find and circle these items that may be on that list:**

Ahhhh! This is the life!

U N D E R C L O T H E S L
J X U C J F P V B T I S A
E V S A A L E K S S Q M U
A S T M C A Z A E D S A N
N H A E K S P P T E U L D
S O M R E H O S O T N L R
N R P A T L S H O O S G Y
E T S O E I S I T W C A B
A S O V S G O R H E R M A
K T N K N H A T B L E E G
E E C I C T P S R S E S B
R O K B O O K S U F N Y I
S I G Z M W H I S T L E A
H A I R B R U S H A T E X

- underclothes
- laundry bag
- sunscreen
- envelopes
- toothbrush
- toothpaste
- hiking shoes
- small games
- hairbrush
- sneakers
- flashlight
- stamps
- socks
- shirts
- soap
- hat
- shorts
- books
- comb
- whistle
- jeans
- jacket
- towels
- camera

Night Hike!

Start at the moon. Find a pathway to the cabin so the moon can light the way to where you'll be sleeping.



Something Fun For Everyone!

There are many activities to choose from at camp. **Can you unscramble these?**

1. i a k y k a n g

2. n i g f i h s


3. a d e n c

4. u s c m i

5. c s r t a f

6. i s a m g n y t c s

Community Calendar



BASIN ELECTRIC POWER COOPERATIVE
A Touchstone Energy® Cooperative

Basin Electric owns and operates the Groton Generation Station that is part of a power supply network for 135 member electric cooperatives in nine states. One of these member systems is Northern Electric.

Cutler Family Hair Care
603 N 2nd St, Groton
605/397-2629



GROTON VET CLINIC



1503 N Broadway, Groton, 605/397-8145

DACOTA BANK Here for you.
Member FDIC

Wheat GROWERS
Connecting Solutions

POET biorefining
Groton
397-2726

AMERICAN FAMILY INSURANCE
All your protection under one roof™

Ryan Likness Agency Inc.
American Family Mutual Insurance Company and its Subsidiaries 717 Main St., Britton • 448-2357
American Family Insurance Company 702 Main St., Webster • 345-4860
Home Office - Madison, WI 53783
©2014 006441 - 9/12 rlikness@amfam.com

Farmers Union CO-OP
101 S 1st Ave., Ferney



395-6461

RDO EQUIPMENT CO.

Aberdeen 225-6772 1-800-843-1865
Redfield 1-800-247-4650
Webster 1-800-658-2252



Thursday, May 28

Birthdays: Kim Zerr • Darliss Larson • Lora McMahan • Marty Sippel • Jim Stearns • Joyce Grenz • Steven Jones • Braeden Flihs

Senior Menu: Oven fried chicken, mashed potatoes, winter mix vegetables, buttermilk biscuits, banana pudding with bananas.

9:00 a.m. to 2 p.m.: St. John's Lutheran Vacation Bible School

11:30 a.m.: James Valley Telecommunications Annual Meeting lunch and registration with meeting at 12:30 p.m. at GHS Gym/

Arena.

Friday, May 29

Birthdays: Clare Brotherton • DeLoris Knoll • Howard Gengerke • Jerry Ray Johnson • Jeff Ringgenberg • Michelle Osterman

Senior Menu: Lemon baked fish, rice pilaf, California blend vegetables, peach crisp, whole wheat bread.

State Track Meet at Spearfish

Saturday, May 30

Birthdays: Hazel McKittrick • Kami Lipp • Kellie Townsend

• Teresa Krueger
State Track Meet at Rapid City

Sunday, May 31

Anniversary: Steve & Tami Herron

Birthdays: Joyce Schaller • Linda Anderson • Carol Osterman • Josephine Doeden

9:00 a.m.: St. John's Lutheran worship.

10:00 a.m.: Heaven Bound Ministries worship in Pierpont (Piano Recital after worship service)

10:15 a.m.: Emmanuel Lutheran worship.

3:00 p.m.: Heaven Bound Ministries worship at Golden Living Center

Monday, June 1

Anniv: Matt & Tammy Locke

Birthdays: Anita Lowary • Chad Barton • Mayme Baker

6:30 a.m.: Emmanuel Lutheran Bible Study

7:00 p.m.: City Council Meeting at Groton Community Center.

Senior Menu: Goulash, green beans, apple crisp, whole wheat bread.

Tuesday, June 2

Birthdays: Lindsey Gese • Heather Koens • Tim Waage • Tom Waage • Trent Anderson • Tiffany Lerew • Rick Rossow

1:30 p.m.: St. John's Lutheran Good Cheer Circle

Senior Menu: Roast pork, mashed potatoes and gravy, tomato spoon salad, carrot bar, whole wheat bread.

Wednesday, June 3

Anniv: Harvey & Sue Flihs II

Birthdays: Eric Johnson • Ryan Johnson • Doug Ehrenberg • Amber Stumpf • Vicki Rossow

1:00 p.m.: St. John's Lutheran Ladies Aid LWML.

5:00 p.m.: Emmanuel Lutheran Sarah Circle

6:00 p.m.: Olive Grove Men's League

Senior Menu: Hot turkey combination, mashed potatoes and gravy, 7 layer salad, fruit.

Thursday, June 4

Anniversaries: Gary & Caralee Heitmann, Jarod & Kristie Flihs, Wade & Renee Marzahn

Birthdays: Jay Johnson, Cheyenne Schaller, Corbin Reich, Tony Waage, Tucker Carda

9:30 a.m.: Emmanuel Lutheran India Circle

2:00 p.m.: Emmanuel Lutheran Nigeria Circle

Senior Menu: Ham, sweet potatoes, peas, acini dePepi fruit salad, whole wheat bread.

Friday, June 5

Birthdays: Stephanie Jondahl, Mark Leonhardt, Ward Gilchrist.

Saturday, June 6

Birthdays: Brandon Stolle, BJ Hanson

Sunday, June 7

Birthdays: Chad Nierman, Lisa Wienk

9:00 a.m.: Emmanuel Lutheran Worship with Communion

9:00 a.m.: St. John's Lutheran worship with Communion

10:00 a.m.: Heaven Bound Ministries worship in Pierpont

Monday, June 8

Birthdays: Lacy Voss, Kayla Johnson, Andrew Marzahn

6:30 a.m.: Emmanuel Lutheran Bible Study

1:30 p.m.: St. John's Lutheran Nursery Circle.

Senior Menu: Salisbury steak, mashed potato and gravy, parsley buttered carrots, banana cake with icing, whole wheat bread.

Tuesday, June 9

Anniversaries: Orville & Joyce Schaller, Terry & Lori Herron, Larry & Glenna Remington

Birthdays: Halle Claire Williamson, Bruce Shilhanek.

Olive Grove Noon Bridge

6:15 p.m.: Olive Grove Ladies Golf Night

7:00 p.m.: Emmanuel Lutheran Council

Going to Camp
Summer Fun

Packing For Camp?

Ahhh! This is the life!
The Spider in the Woods

Who are the people at the camp that make it fun and exciting?

GGGhst??
sizzle sizzle

...and so the ghosts of the trees climbed...

What Kind of Camp?

Fun at Camp!

1. kayaking
2. fishing
3. dance
4. music
5. crafts
6. gymnastics

I love camping!

We live for family time.



Avera Medical Group
Avera.org/live

After a long day at work, there's nothing better than relaxing with your family. Through regular screenings and checkups, Avera Medical Group makes sure you can get the most out of family fun time.

Live better. Live balanced. Avera.

15-PRIM-2839

Local Classified and Card of Thanks Rates

The following rates are for Classifieds published in both the Groton Daily Independent and the Groton Independent, and posted online at www.grotonsd.net. Cut rate in half if you just want it in the GDI or just the weekly.

1 Week: \$9 for first 30 words, 20¢/word thereafter

2 Wks: \$17 for first 30 words, 38¢/word thereafter

3 Wks: \$24 for first 30 words, 54¢/word thereafter

4th consecutive week is free

605/397-NEWS (6397)

110 N Washington St., Groton SD 57445

EMPLOYMENT

The Groton Area School District is seeking applicants for a full-time custodian. Daytime shift during summer months, afternoon/evening shift during school year. Starting wage \$11.00/hour. Benefits include paid sick leave, vacation, holidays, health insurance, matching retirement. Interested parties should contact Joe Schwan at 605-397-2351. More information available at www.grotonarea.com.

FOR RENT

ONE AND TWO bedroom apartment for rent. HDS subsidized. Rent includes utilities and heat. No smoking. Pets okay. Contact Darlene Daly at 605/380-0571 or Arlys Kluess at 605-216-8399.



2015 Groton Area Farm Family of the year - Ron & Kathy Dobberpuhl

Groton Area Chamber of Commerce, along with business sponsors - Professional Management Services, Simon Insurance, and Full Circle Ag would like to congratulate the 2015 Groton Area Farm Family of the year - Ron and Kathy Dobberpuhl. Ron and Kathy have been farming for over 40 years. They took over the family farm in 1993, starting with only 40 head of cattle and 600 acres of farm ground. They are currently farming 1180 acres with 300 acres of hay alfalfa along with 200 cow calf pairs of commercial and registered Black Angus cattle. Ron & Kathy Dobberpuhl's goals

are to focus on quality of product along with helping out the younger generation grow in the cattle industry. They attribute some of their success to having great resources of knowledge available to them. "We have the best agronomist available for crop decisions" Ron & Kathy state. "We have learned and retained a great deal of knowledge from Dallas Sombke for cattle management and crop and seed management from Dale Washnok, as well as from our parents."

DO-IT-YOURSELF

Home Projects



Get your supplies and tools at

S & S Lumber
HARDWARE **HANK**
North Groton

The Life of Leslie Ann Pigors



Services for Leslie Ann (Benson) Pigors, 80, of Andover were held Wednesday, May 27, 2015 at St. Paul's Lutheran Church, Ferney. The Rev. Lloyd Redhage officiated. Burial followed in St. Paul's Cemetery.

Leslie died May 20, 2015 at St. Mary's Hospital in Rochester, Minnesota.

Leslie Ann was born on August 1, 1934 in Verdon to Leslie and Belva (Feller) Benson. She was the 7th of the 8 girls. Leslie was baptized on December 22, 1945 at the family farm and attended the Methodist Church in Conde. Leslie attended school in Conde and graduated in 1952. She was confirmed at St. Paul's Lutheran Church, Ferney in

March of 1958. On September 26, 1958, she was united in marriage with Donald Pigors and they were blessed with two sons, Bobby John and Tom.

Leslie was a member of St. Paul's Lutheran Church in Ferney. She made sleeping mats that were used for mission projects was active in both the Ladies circle and Bible Class. Leslie also belonged to the Pleasure and Profit Extension Club for 55 years. She enjoyed playing cards at the neighbors and doing word search and crossword puzzles. Leslie was involved in the Living Christmas Tree each year. She was current President of the Bates & Scotland Cemetery Association. Leslie collected sheep of all different kinds.

Celebrating her life is her husband, Donald, her sons, Bobby John and Tom, her sisters, Doraine Green of Claremont and Phyllis Olson of Minneapolis.

Preceding her in death were her parents, Leslie and Belva Benson and her sisters: Lois Riddle, Betty Funk, Vella Schmiege, Norma Schiesow and Nancy Zeck.

Honorary Casketbearers will be members of the Pleasure and Profit Extension Club and all of her card playing friends.

Casketbearers were Alan Kroll, Rick Pigors, John Zeck, Robbin Green, Neil Wagner and Todd Morton.



The Groton Area Chamber of Commerce recently presented its "First Dollar of Profit" to the Groton Ag Partners. Pictured left to right are Darcie Moody, Chamber representative Mandy Boe, June Thompson and Carl Schwab. Not pictured is Dennis Larson.

ABC Club

ABC Birthday club is not having a meeting in June because no hostess. On July 7th will meet at Rosewood Court at 1 O'clock with Darlene as hostess. The May 5th meeting met at the Andover Bar with LaVonne Helmer as hostess. Prizes were awarded to Grace Albrecht, Mary Jo Ball and Deloris Knoll. Deloris Knoll received the honor prize. Guest was Merry Jo Ball.

**Business Cards
\$10 for 250
Call 397-6397
or email
sales@grotonsd.net**

MEYERS

TRACTOR SALVAGE

ABERDEEN, SD

1000+ Salvaged Tractors & Combines
400+ Reground Crankshafts
500+ Tractor Tires
300+ Rebuilt Radiators

Large Line of Swather, Baler & Cutter Parts.

GREAT BUYS & SERVICE!

WANT TO BUY TRACTORS, COMBINES & SWATHERS FOR SALVAGE

Phone (605) 225-0185
5 Miles North & 1 Mile West of CASE-IH



Join us for **B4 Baby**



Before you head down the road to parenthood, let Sanford Women's help you prepare with B4 Baby. You'll meet our team of experts - from doctors and nurses to dieticians and financial assistants - all ready to help you prepare for pregnancy with practical advice in a fun and relaxing environment.

You'll also have the opportunity to:

- Speak to a pharmacist
- Learn about nutrition and fitness during pregnancy
- Tour The Women's Center

Monday, June 15 • 6:30 p.m.

Visit sanfordaberdeen.org
or call (605) 626-4550 to register.

SANFORD
WOMEN'S

018002-00380 4/15



MAY 19, 2015 – GENERAL MEETING

Meeting called to order by Chairman Sutton at 8:45 A.M. in the Commissioner's Chambers, Courthouse Annex, Brown County, SD. Present were Commissioners Kippley, Fischbach and Fjeldheim. Commissioner Hansen was absent. Chairman Sutton led the Pledge of Allegiance.

MINUTES: Moved by Fischbach, seconded by Kippley to approve the General Meeting Minutes of May 12, 2015. All members present voting aye. Motion carried.

CLAIMS: Moved by Fjeldheim, seconded by Kippley to approve the following claims:

Payroll: Commission \$3,767.51; Commission Assistant/Human Resources \$4,088.74; Auditor \$7,399.67; Treasurer \$12,616.48; Data Processing \$5,531.88; State's Attorney \$16,169.70; Blood Draws \$300.00; SVA-WA Grant \$1,873.94; Maintenance \$6,384.89; Assessor \$13,108.50; Register of Deeds \$8,758.87; Veterans Service Office \$3,563.74; GIS \$2,195.60; Sheriff Admin \$32,091.71; Jail \$36,391.67; Coroner \$0.00; JDC \$15,279.23; HD \$5,194.50; Welfare Office \$3,500.47; Museum \$7,679.74; Parks & Fairgrounds

\$6,689.18; Fair Board \$4,177.17; 4-H \$1,113.60; Weed \$2,913.12; Planning and Zoning \$1,586.47; Highway \$49,850.15; Communications \$20,535.60; Emergency Management \$3,331.32; Teen Court \$279.21; 24/7 \$2,871.68; Landfill \$13,048.14.

Matching Benefits: FICA \$17,219.43; Medicare \$4,027.15
Professional Fees: Avera St Luke's \$2,050.21; Avera Queen of Peace \$204.70; Carlsen Funeral Home \$1,200.00; Avera St Mary's Hospital \$1,215.77; Denise M Cody \$37.50; David L Merxbauer \$197.94; Foerstart Testing Limited \$380.00; Freeborn Co Sheriff \$65.00; HKG Architects \$36,600.00; Language Line Services \$90.04; Lewis and Clark BHS \$1,120.00; Lucy Iewno \$310.50; Lexisnexis Risk Data \$138.70; NE Mental Health \$988.00; Pollard and Larson \$180.00; Sanford Clinic \$85.00; Sanford Health \$185.06; Sanford Health Occupational \$40.00; SD Dept OF Revenue and Regulation \$525.00; SDN Communications \$1,343.53; Kristi Spitzer \$898.00; Karen Swanda \$37.50; TK Trucking \$1500.00; US Bank \$148.20; Sara Zahn \$1,255.80

Publishing: Aberdeen American News \$1,450.10; Dakota Broadcasting \$1,133.00; Groton Independent \$1,597.73
Rentals: Aberdeen Housing Authority \$330.00; Timothy Gisi \$310.00; Sletten Apartments \$260.00; Wolfson Apartments \$310.00; Zumbaum Property \$310.00

Repairs & Maintenance:A-1 Sanitation \$193.00; Advanced Drainage Systems \$76.00; Ben Hofer Backhoe Service \$538.27; Burdette Security & Technologies \$275.60; G & K Services \$368.00; GCR Tire Service \$258.48; Lien Transportation \$103,857.90; Newman Signs \$40.56; Thee Glass Doktor \$42.00; US Bank \$957.91

Supplies : A&B Business \$502.76; Advanced Drainage Systems \$15,200.00; Best Business Products \$176.80; Carquest Auto Parts \$2,428.79; Climate Control \$3,080.25; Cricket Media \$29.95; Dakota Electronics \$177.50; Dakota Supply Group \$810.66; Dean Foods \$566.69; Aberdeen Medical Center Pharmacy \$2,055.67; Ecolab \$94.19; Rose Erickson \$5.00; State of SD \$1.93; Farm Power MFG \$84.04; Gardner Locksmithing \$80.40; MB LLC \$48.00; Govconnection \$425.87; Jebro \$18,730.20; Kesslers \$51.55; Larry Becker \$244.75; Lucy Iewno \$12.98; Lien Transportation \$313,414.20; Marco \$60.98; Matthew Bender \$81.08; Midwest Art Conservation Center \$100.00; Diane Mielke \$3.03; National 4-H Council \$5.83; National Sheriff Assn \$109.00; NCFE Warner \$3,169.09; Network Services Co \$2,379.54; Newman Signs \$756.00; Pollard and Larson \$6.00; Pro Ag Supply \$2.37; Share Corp \$348.00; Sherwin Williams \$150.00; Sioux City Foundry Co \$13,520.00; Thee Glass Doktor \$20.50; Tractor Supply Co \$95.96; True-north Steel \$5,377.74; US Bank \$8,794.11; West Payment Center

Travel and Conference: Assn of SD Museums \$53.00; Jodi Brown \$78.00; Lynn Heupel \$166.16; The Lodge at Deadwood \$1,344.00; Larry Lovrien \$302.98; Pennington Co Jail \$31.20; Cathy Sauer \$168.40; US Bank \$1870.78; Ryan Vogel \$78.00; Chris White \$139.00; Karly Winter \$319.98

Utilities: Aberdeen City Treasurer \$289.54; Century Link \$1,158.78; City of Hecla \$149.14; State of SD \$85.14; James Valley Telecommunications \$223.10; North Star Energy \$167.62; Northern Electric Co-op \$1,326.28; Northwestern Energy \$1,585.68; US Bank \$606.57; Verizon \$230.11

Other: James River Acct \$79,753.49; Terry Lout \$50.00. All members present voting aye. Motion carried.
PERSONNEL: Moved by Fischbach, seconded by Kippley to approve the following employee step increases, effective May 24, 2015: David Bruckner @ \$19.51 per hour, Tracy Engquist @ \$15.09 per hour, Christeen Krahl @ \$15.21 per hour, James Harpel @ \$15.88 per hour, Erin Bacon @ \$17.11 per hour, Jonathan Waller @ \$15.81 per hour. All members present voting aye. Motion carried. Moved by Fjeldheim, seconded by Fischbach to approve hiring Leesa Christenson as part-time 24/7 Sobriety Program employee, effective May 12, 2015 at \$12.54 per hour. All members present voting aye. Motion carried. Moved by Kippley, seconded by Fischbach to approve hiring Elise Westfall

as part-time JDC Correctional Officer at \$12.54 per hour, effective May 26, 2015. All members present voting aye. Motion carried. Moved by Fjeldheim, seconded by Fischbach to approve hiring Kurt Fleury as seasonal Highway Employee with CDL, effective May 20, 2015 at \$11.99 per hour. All members present voting aye. Motion carried.

FAIR CONTRACTS: Moved by Kippley, seconded by Fischbach to approve and authorize the Chairman to sign entertainment contract with Martina McBride with special guest Dan+Shay for Thursday, August 13, 2015 in amount of \$105,000.00. All members present voting aye. Motion carried. Moved by Kippley, seconded by Fjeldheim to approve and authorize the Chairman to sign the following contracts for the 2015 Brown County Fair: Kelsea Ballerini (performance August 14, 2015 @ \$3,000.00; Greg Gilbertson (photographer @ \$400.00); Aberdeen Lions Club (Gate D Security @ \$500.00); Hub Area Habitat for Humanity (Gate E Security @ \$1,000.00); SD Snow Queen (Gate C Security @ \$1,000.00 and parking assistance @ \$1,000.00); Good Shepherd Lutheran Church (clean grounds, except Grandstand and track area, dust show ring bleachers @ \$3,000.00); NSU Rugby Team (clean grandstand and track area @ \$3,000.00); Spotslarm (exhibit booths in Odde Building @ \$1,600.00 includes set up, delivery and pickup - \$800.00 no set up, but delivery and pickup); Gompf Displays

(exhibit booths in Holum Expo Building @ \$1,755.00 with no setup, delivery and pickup). All members present voting aye. Motion carried.
LOTTERY APPLICATION: Moved by Fjeldheim, seconded by Fischbach to approve the following lottery application: Elm Lake Association for raffle to be held at the Elm Lake Resort on May 22 and 23, 2015. All members present voting aye. Motion carried.
LEASE AGREEMENT: Moved by Kippley, seconded by Fjeldheim to approve and authorize the Chairman to sign the following agreement: Aberdeen Area Chamber of Commerce for lease of the Expo Addition on June 6-7, 2015. All members present voting aye. Motion carried.
CLAIM ASSIGNMENTS: Moved by Fischbach, seconded by Fjeldheim to approve and authorize the Chairman to sign documentation to assign claims against individuals to Credit Collections Bureau for purpose of collecting a lien. All members present voting aye. Motion carried.
ORD 093 – FIRST READING: Moved by Kippley, seconded by Fischbach to approve First Reading of Ordinance #093, An Ordinance amending Title 8 Animal Control in Brown County, Chapter 8.20, Paragraph 8.2001, as follows: It shall be unlawful for any person to abandon any dog or other domesticated animal, or intentionally or through gross negligence allow such animals to

Continues on next page

✓ VOTE ✓ VOTE ✓ VOTE ELECTION DAY JUNE 2, 2015 ✓ VOTE ✓ VOTE ✓ VOTE

SAMPLE COMBINED ELECTION BALLOT

A	June 2, 2015	B	Brown County	C	South Dakota
INSTRUCTIONS TO THE VOTER To vote for a person FILL IN the oval (●) next to the name. Use only a pencil or pen. If you make a mistake, give the ballot back and get a new one. DO NOT cast more votes than are allowed in each race.			Abd. School and SE Ward		
For School Board Member Aberdeen School District 6-1 three year term You may vote for up to <u>two</u> or leave it blank.			Voters who reside in Aberdeen School District 6-1		
<input type="radio"/> Sherrie Gray <input type="radio"/> Linda K. Burdette <input type="radio"/> Amy J. Scepaniak <input type="radio"/> Bradley W. Olson			←		
For City Council Member Aberdeen Ward-SE five year term You may vote for <u>one</u> or leave it blank.			Voters who reside in Aberdeen City SE Ward Precincts 05, 06, 11		
<input type="radio"/> Cory Allen Heidelberg <input type="radio"/> Laure Swanson			←		

INSTRUCTIONS TO THE VOTERS

VOTING RIGHTS

Any voter who can't mark a ballot because the voter has a physical disability or can't read, may ask any person they choose to help them vote.

Any voter may ask for instruction in the proper procedure for voting.

Any voter at the polling place prior to 7:00 p.m. is allowed to cast a ballot.

If your voting rights have been violated, you may call the person in charge of the election at 605-626-7110, the Secretary of State at 888-703-5328, or your state's attorney. A felon who receives a sentence of imprisonment to the adult penitentiary system, including a suspended execution of sentence, loses the right to vote. Felons so sentenced may register to vote following completion of their sentence. Further information is available at www.sdsos.gov.

ELECTION CRIMES

Anyone who makes a false statement when they vote, tries to vote knowing they are not a qualified voter, or tries to vote more than once has committed an election crime.

PLEASE READ

To vote at your polling place, you must either: Present a photo ID, or if not able to do so, Sign an affidavit, which will be given to you

Accepted forms of photo identification include any one of the following:

- A SD driver license or non-driver ID card; or
- A US government photo ID; or A tribal photo ID; or
- A current student photo ID from a SD high school or
- SD accredited institution of higher education.

NOTICE OF COMBINED ELECTION

Aberdeen School District No. 6-1 and Aberdeen City SE Ward

A Combined Election will be held on Tuesday, June 02, 2015 at Aberdeen Vote Centers in Brown County. The election Vote Centers will be open from seven a.m. to seven p.m. central standard time on the day of the election.

No longer are voters required to vote within precinct jurisdictions.

Voters can cast ballots at any of the following Vote Centers in Brown County:

- Ramada Convention Center, 2727 6th Ave SE, Aberdeen SD (east entrance)
- Best Western Ramkota Hotel and Convention Center, 1400 8th Ave NW, Aberdeen SD (north convention center entrance)
- Courthouse Community Room, 25 Market Street, Aberdeen SD (handicapped accessible entrance on north side of building)

Voters with disabilities may contact the county auditor for information and special assistance in absentee voting or polling place accessibility. Maxine Fischer, Brown County Auditor

NOTICE OF TESTING

AUTOMATIC TABULATING EQUIPMENT

NOTICE is hereby given that the automatic tabulating equipment will be tested to ascertain that it will correctly count the votes for all offices and measures that are to be cast at the

Combined Election held on the 2th day of June 2015.

The test will be conducted on the 29st day of May 2015, at 4 o'clock p.m. at the following location:

Brown County Auditor's Office
 25 Market Street, Ste 1
 Aberdeen, SD 57401

Dated this 27th day of May 2015.

Maxine Fischer, Brown County Auditor

Published once at the total approximate cost of \$262.50.

Hanlon Brothers
Gravel Hauling
 New & Cleaning of
 Stockdams with our
 60' reach trackhoe
605/395-6531

Mark Malmberg, DDS
 19 North 6th St.
 Oakes, N.D.
 701-742-3401

Removal, Grinding, Chipping, Trimming
605-725-WOOD
 Mason Dinger: 605-216-6098
 Trevor Zeck: 605-216-8910

DAKOTA TREE COMPANY

May 19 Meeting Minutes Continued

freely roam upon a public right of way or upon the property of another. Violation of this ordinance shall also be deemed a public nuisance. Roll call vote: Commissioners Hansen-absent, Kippley-aye, Fischbach-aye, Fjeldheim-aye, Sutton-nay. Motion carried.

BID – ROAD OIL: Time and place, as advertised to open, read and consider bids for furnishing and delivery of MC70 and MC3000 road oil for use by the Brown County Highway Department. One bid received from Jebro, Inc. Moved by Fischbach, seconded by Kippley to refer bid to Dirk Rogers, Highway Superintendent for review and recommendation. All members present voting aye. Motion carried. Moved by Fischbach, seconded by Kippley to award bid submitted by Jebro Inc (only bid received) for furnishing and delivery of MC70 @ \$755.00 per ton and MC3000 @ \$655.00 per ton, as recommended by Highway Superintendent. All members present voting aye. Motion carried.

CERTIFICATES PRESENTED: The South Dakota Emergency Management Association Certificates of Professionalism were presented to Scott Meints, as a Certified Emergency Manager-A (Advanced) and Patti Woods, as Certified Emergency Manager-B (Basic). Congratulations were extended to Scott and Patti.

FAIR TICKET SALES: Paul Sivertsen, IT Manager and Karla Pfeiffer, Fair Manager demonstrated the program to be used at the Fair Office for selling the 2015 Fair Tickets.

APPLICATION FOR OCCUPANCY: Moved by Fischbach, seconded by Fjeldheim to approve and authorize the Chairman sign application, submitted by James Valley Telecommunications for occupancy of Brown County Highway #11 in Sec 22/27-T125N-R60W of the 5th P.M., Brown County, SD, to provide telecommunication services. All members present voting aye. Motion carried.

HIGHWAY STP: Dirk Rogers, Highway Superintendent discussed the proposed payout schedule of the Surface Transportation Program (STP) account, requesting that the initial payment scheduled for July 1 in amount of \$387,303.58 be used for the purchase of additional asphalt in 2015 for upcoming projects and subsequent payments be allowed to accumulate for future projects.

PHASE III JAIL PROJECT: Sheriff Mark Milbrandt and Maintenance Manager Judy Dosch presented information on the Phase III Jail Project. Moved by Kippley, seconded by Fischbach to approve and authorize the Chairman sign agreement with HKG Architects, Inc to provide architectural, structural, mechanical and electrical engineering documents and specifications for the Phase III Jail Renovations Project. All members present voting aye. Motion carried.

NACO CREDENTIALS: Moved by Kippley, seconded by Fjeldheim to authorize the Chairman sign Official Credential Documentation authorizing Gary Vetter to vote on behalf of Brown County at the Annual NACO Convention. All members present voting aye. Motion carried.

EXECUTIVE SESSION: Moved by Kippley, seconded by Fjeldheim to go into executive session to discuss personnel, per SDCL 1-25-4(1); and contract, per SDCL 1-25-4(4) with Larry Lovrien and Gary Vetter in attendance. All members present voting aye. Motion carried. The Chairman declared the executive session closed, with no formal action taken as a result of the discussion, but requested the Auditor to advise the Commission when boiler plate information will be included in a motion.

ADJOURNMENT: Moved by Kippley, seconded by Fjeldheim to adjourn the Brown County Commission. All members present voting aye. Motion carried. Maxine Fischer, Brown County Auditor

Published once at the total approximate cost of \$100.63..

Groton School
May 11 Meeting Minutes

UNOFFICIAL PROCEEDINGS OF BOARD OF EDUCATION GROTON AREA SCHOOL DISTRICT NO. 06-6 REGULAR MEETING May 11, 2015

President Steve Smith called the meeting to order at 5:30 p.m. in the High School conference room. Members present: L. Hanson, M. Harder, D. Nelson, G. Rix, S. Smith, and M. Weismantel. Absent: K. Kjeldsen. Others present were Supt. J. Schwan, Principals D. Dalchow and A. Schwan and Business Official M. Weber.

Moved by Weismantel, second Nelson to approve the agenda with the following amendments: under Old Business Item #3a – approve application for Administrative Rule 24:43:11:01, under New Business Item #2a – approve contract for Jordan Kjellsen and under New Business Item #2b – approve auxiliary work agreement for Amanda Morehouse. Motion carried.

Weber reviewed the North Central Special Ed Coop FY16 Preliminary Budget in accordance with SDCL 13-11-12.

Moved by Harder, second Rix to approve the following consent agenda items as presented: District minutes of April 13 and 27; North Central Special Ed Coop items; financial reports; agency accounts; investments; bills; school lunch reports; transportation reports and Open Enrollment Applications #16-01 for a junior Kindergarten student from Aberdeen, #16-02 for a Kindergarten student from Aberdeen, #16-03 for a junior Kindergarten student from Aberdeen, #16-04 for a junior Kindergarten student from Aberdeen, #16-05 for a Kindergarten student from Langford Area, #16-06 for a Kindergarten student from Aberdeen and #16-07 for a Kindergarten student from Langford Area. Motion carried.

GENERAL FUND: Net Salary –159,241.08 ; FIT – 16,522.76; Medicare – 6,009.98; FICA – 25,698.26; SDSBF – 57,635.01; American Funds – 643.09; Washington National – 98.40; SD Retirement – 26,381.52; First National Bank HSAs – 100.00; Waddell & Reed – 1,320.31; Horace Mann – 298.74; Thrivent – 186.03; AFLAC – 1,726.09; Delta Dental – 4,604.74; Surety Finance – 474.00; SD Supplemental Retirement – 761.03; Aberdeen American-News – ads, 656.98; Aberdeen Awards – ath. awards, 1,347.80; Acme Tools – repairs, 46.03; Agency Fund – advance payments, 14,929.43; Award Emblem – music awards, 620.39; Best Western Ramkota – FBLA lodging, 727.92; City of Groton – utilities, 11,218.33; Coca-Cola – supplies, 278.88;

Cole Papers – supplies, 3,014.95; Connecting Point – services, 3,200.00; Dakota Supply Group – bulbs, 185.76; Dan Dalchow – gas/meals, 69.15; Dependable Sanitation – services, 1,254.50; Fairfield Inn – FFA lodging, 3,243.00; Farnams – supplies, 161.80; G&K Services – rug services, 330.85; GCR Tires – tires, 172.54; GASD Food Service – supplies, 972.61; GASD/McCranie – overpmt refund, 300.00; Groton Daily Independent – ads, 84.00; Groton Dakota Press – ads, 15.00; Groton Ford – fuse, 6.72; Harlow's – repairs, 4,676.66; Hillyard – services, 490.10; Holiday Inn Express – FCCLA lodging, 960.00; House of Glass – repairs, 1,274.90; J.Gross Equipment – services, 234.95; JW Pepper – music, 195.67; James Valley Telecomm. phone serv, 812.53; Jerke Irrigation – services, 336.04; John Deere Financial – parts, 138.47; Jostens – awards, 451.28; Macy Knecht – overpmt refund, 100.00; Matheson Tri-Gas – supplies, 347.72; McGannon Plumbing – services, 206.27;

Northwestern Energy – natural gas, 2,787.55; Olde Bank Floral-n-More – flowers, 215.00; Sherry Raap – overpmt refund, 100.00; Rux Plumbing – services, 688.78; S&S Lumber – supplies, 110.64; Scholastic – books, 200.70; Brian Schuring – gas/meals, 67.78; Sheraton Sioux Falls – guidance lodging, 684.00; Luke Smith – accompanist, 85.00; Jodi Sternhagen – meals, 18.20; Lindsey Tietz – meals, 28.72; Joy Voss – accompanist, 175.00; Mike Weber – gas/meals, 80.39; West Music – scarves, 43.90. Total General Fund – \$360,047.93.

CAPITAL OUTLAY: Acme Tools – IA equipment, 204.64; Agency Fund – adv pmts, 2,657.89; CDW Government – surge cord, 549.60; Marco – copier services, 1,816.94; Scholastic – lib. books, 332.72. Total Capital Outlay Fund - \$5,561.79.

SPECIAL ED: Net Salary – 24,265.29; FIT – 1,996.53; Medicare – 903.52; FICA – 3,862.86; SDSBF – 8,566.50; SD Retirement – 3,876.36; Waddell & Reed – 250.00; AFLAC – 345.83; Delta Dental – 690.40; SD Supplemental Retirement – 100.00; Agency Fund – adv pmt, 19.05; Avera St. Luke's – services, 6,440.66. Total Special Education Fund – \$51,317.00.

ENTERPRISE: Food Service: Net Salary – 6,263.80; FIT – 398.02; Medicare – 219.24; FICA – 937.38; SDSBF – 1,393.33; SD Retirement – 638.74; AFLAC – 54.22; Agency Fund – adv pmt, 468.78; CWD-Aberdeen – food/supp, 2,458.81; Dean Foods – dairy products, 1,753.95; Earthgrains – bakery product, 209.20; G&K Services – linen serv, 348.75; Reinhart – food/supp, 2,714.07; SD DOE-CANS – processed commodities, 113.34; Sysco – food/supp, 1,091.47; US Foods – food/supp, 3,316.67; Woodman Refrigeration – repairs, 3,915.00. Total Food Ser-

vice -- \$26,294.77.
 OST: Net Salary – 1,245.40; FIT – 95.90; Medicare – 44.44; FICA – 190.00; SDSBF – 545.27; SD Retirement – 147.64; Agency Fund – adv pmt, 161.74; GASD Food Serv. – snacks, 99.18. Total OST -- \$2,529.57. Total of Enterprise Funds – \$28,824.34.
AGENCY FUND: Total - \$41,925.23.

RECEIPTS: Local Source, Taxes – 180,701.05; Other Local Sources – 80,795.67; County Sources – 5,159.50; State Sources – 2,584.00; Federal Sources – 14,191.48. Total Receipts – \$283,431.70.

Members of the public were allowed five minutes to address the board on any topic of their choice. With no public members present to speak, the board proceeded with their remaining agenda items.

There were no school board committee reports given.

Tom Hunstad from Johnson Controls presented a 3-year renewal of the District's Preventative Maintenance Service Agreement as follows: FY'16 – premium coverage for all equipment for \$45,345 plus excise tax; FY'17 premium coverage for all equipment except elementary air handling units with basic coverage for \$45,345 plus excise tax and FY'18 premium coverage for all equipment except elementary air handling units and high school boilers with basic coverage for \$45,345 plus excise tax. Moved by Harder, second Weismantel to approve the agreement as presented. Motion carried.

Superintendent Schwan requested an approval application for waiver of Administrative Rule 24:43:11:01 allowing the district to offer Algebra I for credit to 8th grade students. Moved by Nelson, second Rix to approve as presented. Motion carried.

Weber presented the District FY16 District Preliminary Budget in accordance with SDCL 13-11-12.

The board heard from a handful of community patrons wishing to reinstate co-curricular programs for Golf, DI, Debate, Cheerleading and Soccer. Moved by Harder, second Weismantel to fund all five programs as part of the FY16 District Budget. Motion carried.

The following items were discussed in administrative reports: employment vacancies, Blue Ribbon Task Force meeting, ASBSD/SASD joint convention, final day of school May 19th, Smarter Balance and SAT 10 testing, Kindergarten visitation, Elementary Track and Field Day/Health Fair, Middle School transition, DARE graduation, student appreciation, Seniors last day May 12th, Driver's Education, staff exit meetings, and health insurance enrollments.

Moved by Weismantel, second Nelson to approve 2015-17 GTA Negotiated Agreement. Motion carried.

Moved by Harder, second Rix to issue certified teaching con-

tracts for 2015-16 with return date of May 20, 2015. Motion carried.

Moved by Hanson, second Weismantel to hire Jordan Kjellsen as Middle School Math instructor with salary to be published in July. Motion carried.

Moved by Nelson, second Rix to hire Amanda Morehouse as Business Office Assistant at \$10.50/hour. Motion carried.

Moved by Weismantel, second Nelson to approve North Central Special Ed Coop Agreement for membership in 2015-16. Motion carried.

Moved by Nelson, second Rix to cast ballot for Brad McDonald as East River At-Large Representative to SDHSAA Board of Directors. Motion carried.

Moved by Hanson, second Nelson to cast ballot for Monte Wagner for Small School Group Board of Education Representative to SDHSAA Board of Directors. Motion carried.

Moved by Rix, second Harder to cast ballot for Bud Postma for Division II Representative to SDHSAA Board of Directors. Motion carried.

Moved by Weismantel, second Nelson to cast ballot for Constitutional Amendment #1. Motion carried.

Moved by Harder, second Nelson to approve ASBSD Protective Trust Agreement for Worker's Compensation Insurance for 2015-16. Motion carried.

Moved by Weismantel, second Nelson to authorize Eide Bailly to conduct FY15 School District Audit. Motion carried.

Moved by Weismantel, second Rix to approve off-staff coaches: Chelsea Hanson, Head Volleyball; Dana Dargatz, Head Wrestling; Mike Becker, Head Boys Soccer; Cory Harder, Head Girls Soccer; Tammy Weiszhar, Co-Football Cheerleader Advisor; Kelli Hanson, Co-Football Cheerleader Advisor; Sandi Sippel, Wrestling

Cheerleader Advisor and Joann Donley, Co-Destination Imagination. Motion carried.

Moved by Nelson, second Harder to approve work agreements for Special Education Extended School Year Services: Deb Winburn, 6 hours; Ann Gibbs, 56 hours; Katie Miller, 56 hours; and Becky Erickson, 31.5 hours. All teachers will be paid \$15.00/hour. Motion carried.

Moved by Rix, second Weismantel to approve work agreements for Summer Librarians: Becky Erickson, 21 hours at \$12.00/hour and Becky Lewandowski, 54 hours at \$10.90/hour. Motion carried.

Moved by Weismantel, second Nelson to approve work agreements for Summer School Services: Alyssa Brown, 88 hours at \$15.00/hour and Julie Milbrandt, 88 hours at \$15.00/hour. Motion carried.

Moved by Nelson, second Weismantel to approve all signed auxiliary staff agreements for 2015-16, with salaries to be published in July. Motion carried.

Moved by Nelson, second Weismantel to recess at 6:50 pm to attend the high school Spring Concert. Motion carried.

Smith declared the board out of recess at 8:55 pm.

Moved by Harder, second Weismantel to go into executive session at 8:55 pm pursuant to SDCL 1-25-2 (4) for administrative negotiations. Motion carried.

President Smith declared the board out of executive session at 10:38 pm.

Moved by Nelson, second Hanson to adjourn. Motion carried.

M. J. Weber, Business Manager Steven R. Smith, President

The addition of signatures to this page verifies these minutes as official.

Published once at the total approximate cost of \$108.20.

Fresh flowers, silks, home decor

Olde Bank Floral

Olde Bank @ Floral & so much more

101 N. Main St., Groton ~ 397-8650
 www.oldebankfloral.com

Webster Theatre

Theatre opens at 7 pm with movies starting at 7:30 pm, Friday through Monday.

5/29-6/1 Paul Blart: Mall Cop 2 PG 6/5, (6/6 closed), 6/7 & 6/8 - Hot Pursuit PG 13 (closed on Saturday only that weekend)

MONTHLY DISTRICT FINANCIAL REPORT FOR GROTON AREA SCHOOL DISTRICT 06-6									
For the reporting period beginning July 1, 2014, and ending April 30, 2015									
	General	Restricted	Capital	Special	Pension	Bond	Enterprise	Agency	Total for
	Fund	Gen Funds	Outlay	Education	Fund	Redemption	Fund	Fund	District
1. Beginning Balance	1,622,757.88	32,052.21	672,674.55	231,522.95	0.00	146,425.94	60,963.29	193,111.52	2,959,508.34
a. cash	0.00	0.00	0.00	0.00	0.00	0.00	0.00	0.00	0.00
b. securities invested	1,622,757.88	32,052.21	672,674.55	231,522.95	0.00	146,425.94	60,963.29	193,111.52	2,959,508.34
2. Transfers in									
3. Revenue to date	2,594,919.30	0.00	641,774.87	364,228.92	115,580.22	121,611.62	259,466.79	542,392.19	4,639,973.91
4. Total accounted for	4,217,677.18	32,052.21	1,314,449.42	595,751.87	115,580.22	268,037.56	320,430.08	735,503.71	7,599,482.25
5. Transfers out									
6. Expenditures to date	3,204,610.27	0.00	907,030.13	450,079.86	0.00	197,845.00	237,020.26	522,868.10	5,519,453.62
a. encumbrances	0.00	0.00	0.00	0.00	0.00	0.00	0.00	0.00	0.00
b. disbursements	3,204,610.27	0.00	907,030.13	450,079.86	0.00	197,845.00	237,020.26	522,868.10	5,519,453.62
7. Ending Balance	1,013,066.91	32,052.21	407,419.29	145,672.01	115,580.22	70,192.56	83,409.82	212,635.61	2,080,028.63
a. cash	1,200,437.00	0.00	0.00	0.00	0.00	0.00	0.00	0.00	1,200,437.00
b. securities invested	(187,370.09)	32,052.21	407,419.29	145,672.01	115,580.22	70,192.56	83,409.82	212,635.61	879,591.63
April Receipts	116,031.08	0.00	47,729.07	26,500.60	9,070.68	7,655.06	29,776.87	46,668.34	283,431.70
April Expenses	350,600.40	0.00	6,499.81	52,292.66	0.00	0.00	25,370.79	41,925.23	476,688.89
Agency Cash on Hand	0.00								
District Savings	879,591.63								
Certificate of Deposit	0.00								
District Cash on Hand	1,200,200.00								
Total for District	2,079,791.63								

The Life of Amy Flemmer



Services for Amy Marie Somers Flemmer, of Andover were held Tuesday, May 26, 2015, at Zion Lutheran Church in Andover with burial following in the Andover Cemetery. Amy Marie Somers Flemmer died May 21, 2015, at Rosewood Court, Groton, SD, having lived one month longer than her mother who had also died at age 88. Born on the prairie, she had no wish to reside elsewhere and spent almost all of her years living in Day and Brown counties. The fourth child of Harold A. (H.A.) and Amy (Amsden) Somers,

she was born in her parents' home in Verdon, S.D., on December 16, 1926. At age nine months she moved to Andover, riding in a horse-drawn wagon driven by her mother. As a youngster her family purchased a house in Andover which became her residence for over 75 years until in 2008 she moved to Groton. Quite recently she remarked that Andover had been a great place to be raised and to raise her children.

Her mother, a former teacher, taught her to read before she began elementary school so in her first year she combined two grades, graduating from Andover High School in 1943. During her secondary years she served as a cheerleader, played basketball, excelled as a trumpet player in the band, and finished as the salutatorian of her class. She then entered Northern State in Aberdeen, graduating in 1945 as an elementary teacher. For the next two years she taught in Mobridge and while attending a dance there met Gordon Flemmer of Selby whom she married on July 6, 1947.

After the marriage she and Gordon settled in Andover where she taught at the school while Gordon farmed and worked with her father at the business which eventually became Somers and Flemmer Service. She assisted with the business and farming and especially enjoyed the fall of the year when the new Chevrolet models were introduced. When she and Gordon began their family she spent until 1963 as a stay-at-home mom, returning to teaching for a year at Pierpont. In Fall 1964, she joined the Groton school system as a fourth grade teacher, a position that she held for 28 years until retiring in 1992. During her early years at Groton her summers were not vacations as she diligently attended summer school at Northern State until completing her Bachelor of Science in elementary education in 1969. Amy and Gordon had three children during the early 1950's – Candace, Kim, and Jon; then the day after turning 48 years old in 1974 she gave birth to their son Ross who she later taught as a fourth grade student.

Friends and social connections were vital to Amy's happiness; many of her teaching colleagues became her lifelong friends. Earlier in her life she was a member of Eventide Study Club, Wednesday Club, a couples whist club, and a square-dancing group. Additionally she participated in bowling leagues and a golf league in Webster. She was an avid fan of both the Minnesota Twins and Vikings as well as her son's Dell Rapids St. Mary's football team. Before Gordon's death in 1993, they served on the Andover All-School Reunion Committee and participated in couples bridge clubs and a dinner club. Always an enthusiastic traveler she had arranged several trips to Hawaii with Gordon. Since retiring she enjoyed numerous bus tours especially with Ardath May – to New England, throughout the South, and in western U.S.; they also cruised to Alaska. When Ardath moved to Aberdeen she maintained this friendship through the efforts of another very close friend, Sheryl Keup. In later years she continued to play bridge especially enjoying partnering with Arlene Anderson; at Rosewood she even learned to enjoy bingo, at which she won 2.5 times on the day of her death.

Her faith centered her life. She was confirmed at the Andover Methodist Church where she was also married, but with Gordon she joined Zion Lutheran and remained a member there until her death. During that time she was an active member of the Zion Ladies Aid and related groups. Her children and grandchildren provided her with great joy. They chuckled when she complained that driving through northern Minnesota was boring because she couldn't see anything – the trees were in the way. Truly a daughter of the prairie.

Amy is survived by her children: Candace (Daniel) Kauffman, Winona, MN; Judge Jon (Jill) Flemmer, Webster, SD; Ross (Cristy) Flemmer, Dell Rapids, SD; her grandchildren: Christopher Kauffman, Amy (Robert Kinyua) Kauffman, Beth (Kevin) DeRonne, Seth Flemmer, Lucas Flemmer, and Jacob Flemmer; her sister Lucille Pett, Whitewater, WI. She was preceded in death by her husband Gordon, her son Kim, her parents, and her brothers Eugene and Richard.

Casketbearers were Chris Kauffman, Seth Flemmer, Kevin DeRonne, Robert Kinyua, James Dylla and Scott Anderson.

In lieu of flowers, the family suggests donations to Storybook Land in Aberdeen, SD, Groton Transit in Groton, SD, or Zion Lutheran in Andover.

Ken's SUPER FAIR FOODS
www.kenssuperfair.com
• ABERDEEN • GROTON • CLARK • IPSWICH • EUREKA • BRITTON

View the Weekly Flyer on the American News Mobile App!

Memorial Day Store Hours
Ken's Super Fair Foods/Ken's Food Fair, Ken's Shell Express and Ken's Bottle Shop in Aberdeen, Groton & Ipswich will be open Regular Hours. Ken's Food Fair in Britton, Clark and Eureka will be open 9am - 1pm.

FIRE UP THE GRILL!

- U.S.D.A. Choice Boneless Bottom Sirloin Steak** VALUE PACK Per Lb. **\$5.99**
- FRESH Sweet Cantaloupe** Per Lb. **59¢**
- I Can't Believe It's Not Butter, Country Crock, Promise or Brummel & Brown Spread** 2-7.5 Oz. to 15 Oz. Ctn. **\$1.99**
- Hormel Whole Boneless Pork Loin** Per Lb. **\$1.99**
CUT WRAPPED AND FROZEN FREE
- Hormel Always Tender Pork Back Ribs** Per Lb. **\$2.99**
- Folger's Coffee** Decaf 22.6 Oz. Can OR Regular Grinds 20.6-33.9 Oz. Can **\$7.88**
- NEW CROP Green or Red Seedless Grapes** Per Lb. **\$1.49**
- Heinz Squeeze Ketchup** 34-39 Oz. Bottle **\$2.49**
- Ball Park Hamburger or Coney Buns** 8 Ct. Pkg. **\$1.99**
- Bounty Paper Towels** 6 Big Roll Pkg. **\$6.99**
- Coke, Diet Coke or Coke Zero** 6 Pack .5 Liter Bottles **4 for \$10**
- Dean's Country Fresh Ice Cream** 4.5 Quart Pail **\$5.99**
- Bud, Bud Light** 18 Pack 16 oz. Cans **\$14.49**
- Black Velvet** 1.75 Liter **\$15.95**
- Skippy Peanut Butter** 9-1.5 oz. Cans or 16.3 oz. Jar **\$1.99**

Find us on Facebook, Twitter, and other social media.

ABERDEEN OPEN 7 DAYS A WEEK
BRITTON OPEN 7 DAYS A WEEK
CLARK OPEN 7 DAYS A WEEK
EUREKA OPEN 7 DAYS A WEEK
GROTON OPEN 7 DAYS A WEEK
IPSWICH OPEN 7 DAYS A WEEK

PROFIT MADE BY THE NEWS INDUSTRY
MAY 24th THRU MAY 30th

Mon	Tue	Wed	Thu	Fri	Sat	Sun
24	25	26	27	28	29	30

The Groton Independent

605/397-NEWS (6397)
Fax: 1-775-459-6259
Paul Irvin Kosel, Publisher
paperpaul@grotonsd.net ~ 605-397-7460
Tina Kosel, Office Manager
office@grotonsd.net ~ 605-397-7285
Notices: legals@grotonsd.net
News Items: news@grotonsd.net
Deadline to submit items: Monday at noon
Yearly Subscription Rates: 12 Month Rate: \$35
Groton Daily Independent internet paper: \$31.80.
Tax included in rates.
The Groton Independent (USPS# 230-440) is published weekly with its periodicals postage paid at Groton, SD.
Postmaster: Send address changes to Groton Independent
110 N Washington St., Groton, SD 57445